


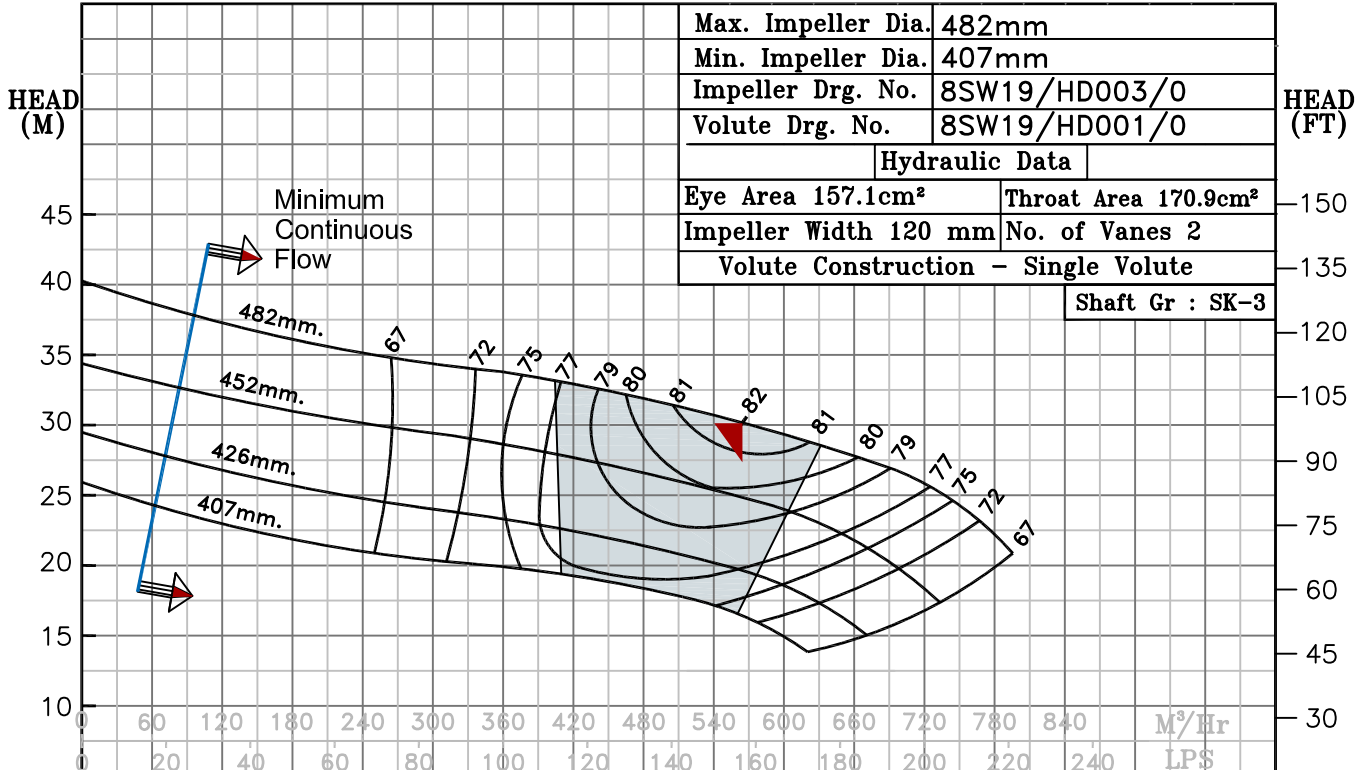
NOTE- PERFORMANCE AS PER ISO 9906 GRADE-2B

| | | | |
|---|-----------------------------------|----------------|--------|
| PERFORMANCE CURVE OF 8SW19 @980 R.P.M | | 8SW19/X/601956 | |
|  <p>PUMPSENSE <i>SW RANGE</i></p> | MODEL 8SW19 | WORKING PRESS. | 12 bar |
| | SIZE 250X200-482 | TEST PRESS. | 18 bar |
| | TYPE-DRY PIT NON-CLOG SEWAGE PUMP | | |
| | MAX. SPHERE SIZE - 90MM | SPEED 980 rpm | |

SHADED REGION ON THE H-Q CURVE REPRESENTS OPTIMUM SELECTION ZONE

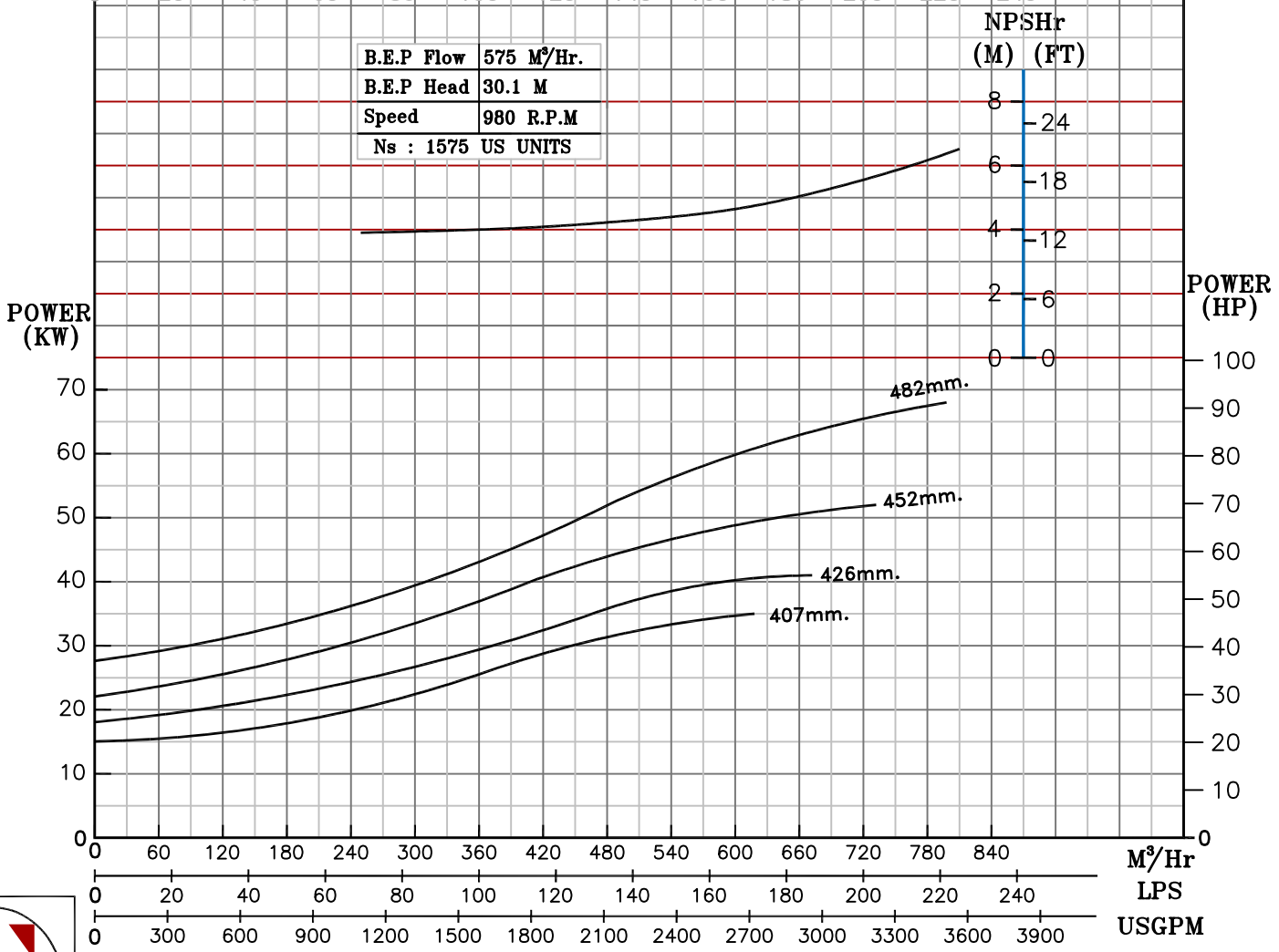
PUMP PERFORMANCE CHARACTERISTICS COMPUTED BASED ON CLEAN COLD WATER S.G 1.0

| | |
|-------------------------------------|----------------------------------|
| Max. Impeller Dia. | 482mm |
| Min. Impeller Dia. | 407mm |
| Impeller Drg. No. | 8SW19/HD003/0 |
| Volute Drg. No. | 8SW19/HD001/0 |
| Hydraulic Data | |
| Eye Area 157.1cm ² | Throat Area 170.9cm ² |
| Impeller Width 120 mm | No. of Vanes 2 |
| Volute Construction - Single Volute | |
| Shaft Gr : SK-3 | |



| | |
|------------|-------------------------|
| B.E.P Flow | 575 M ³ /Hr. |
| B.E.P Head | 30.1 M |
| Speed | 980 R.P.M |
| Ns | 1575 US UNITS |

| | |
|-------|----------|
| NPSHr | (M) (FT) |
| 8 | -24 |
| 6 | -18 |
| 4 | -12 |
| 2 | -6 |
| 0 | 0 |



980 RPM