


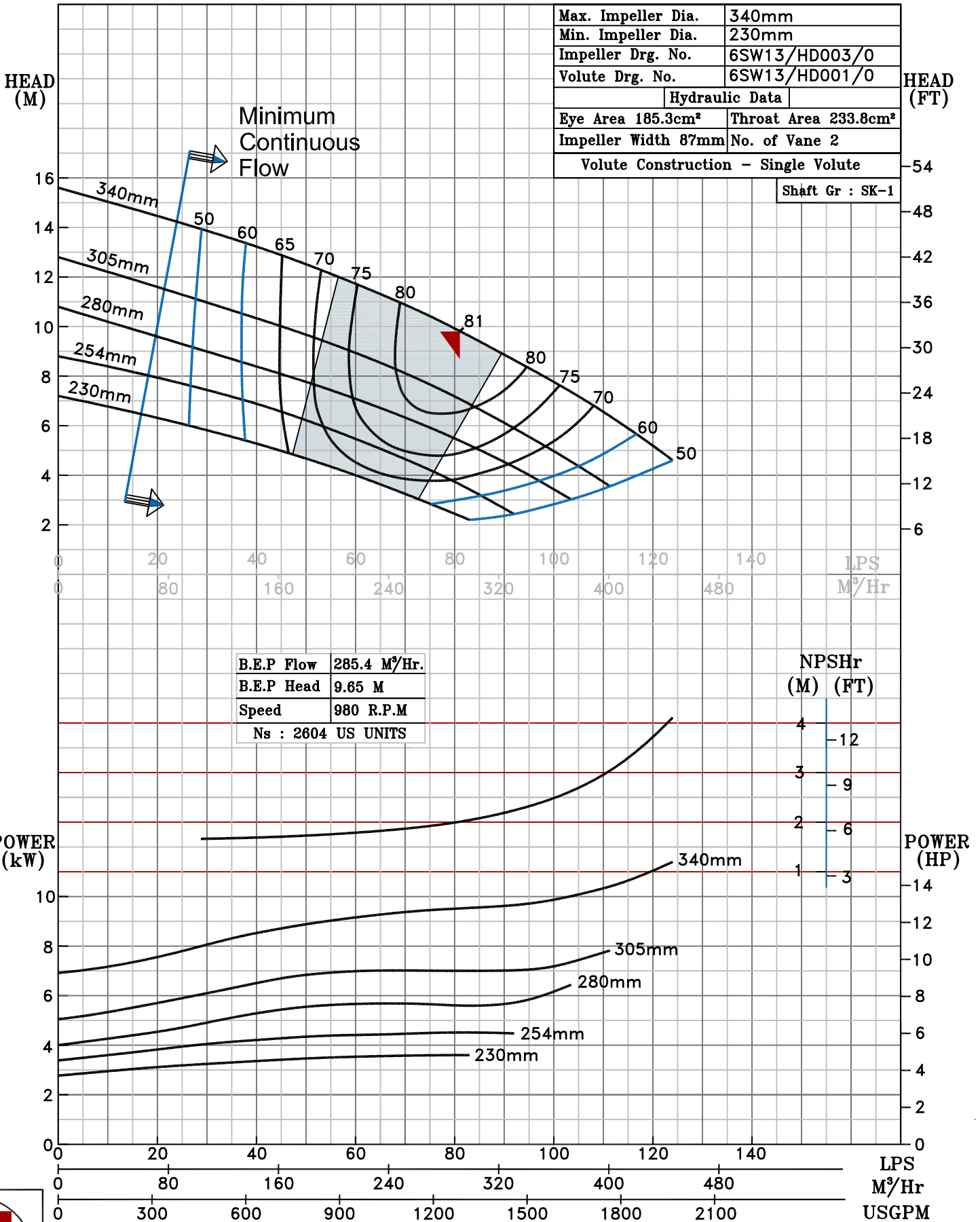
NOTE- PERFORMANCE AS PER ISO 9906 GRADE-2B

PERFORMANCE CURVE OF 6SW13 @980 R.P.M		6SW13/X/601056		
 <h1>PUMPSENSE</h1> <p>SW RANGE</p>	<b>MODEL 6SW13</b>	WORKING PRESS. 12 bar		
	SIZE-200x150-340	TEST PRESS. 18 bar		
	TYPE-DRY PIT NON-CLOG SEWAGE PUMP			
	MAX. SPHERE SIZE - 50MM	SPEED 980 rpm		

SHADED REGION ON THE H-Q CURVE REPRESENTS OPTIMUM SELECTION ZONE

PUMP PERFORMANCE CHARACTERISTICS COMPUTED BASED ON CLEAN COLD WATER S.G 1.0

Max. Impeller Dia.	340mm
Min. Impeller Dia.	230mm
Impeller Drg. No.	6SW13/HD003/0
Volute Drg. No.	6SW13/HD001/0
Hydraulic Data	
Eye Area 185.3cm <sup>2</sup>	Throat Area 233.8cm <sup>2</sup>
Impeller Width 87mm	No. of Vane 2
Volute Construction - Single Volute	
Shaft Gr : SK-1	



980 RPM