
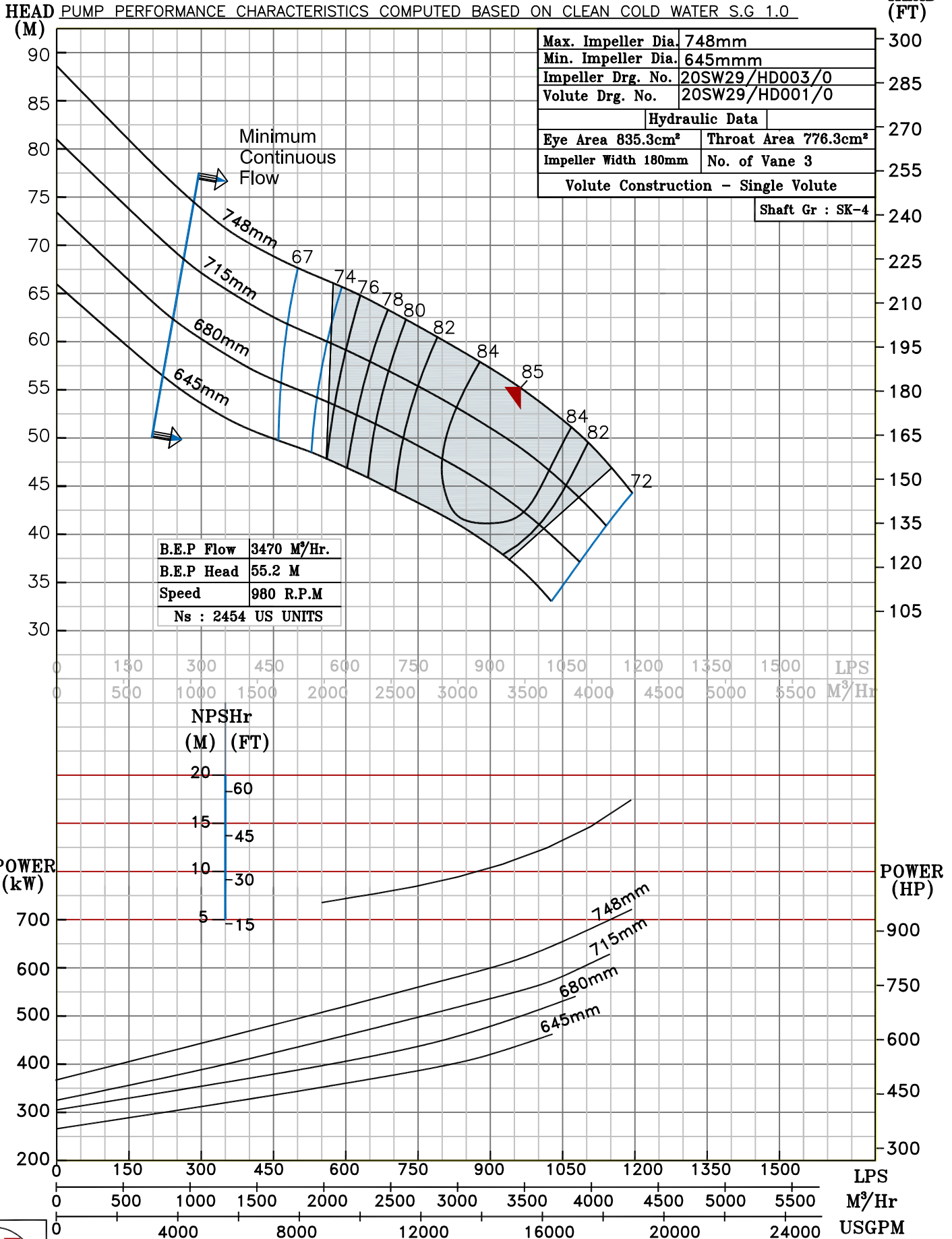


NOTE- PERFORMANCE AS PER ISO 9906 GRADE-2B

PERFORMANCE CURVE OF 20SW29 @980 R.P.M		20SW29/X/603956	
 PUMPSENSE <i>SW RANGE</i>	MODEL 20SW29	WORKING PRESS. 12 bar	
	SIZE 600x500-748	TEST PRESS. 18 bar	
	TYPE-DRY PIT NON-CLOG SEWAGE PUMP		
	MAX. SPHERE SIZE - 130MM	SPEED 980 rpm	

SHADED REGION ON THE H-Q CURVE REPRESENTS OPTIMUM SELECTION ZONE

PUMP PERFORMANCE CHARACTERISTICS COMPUTED BASED ON CLEAN COLD WATER S.G 1.0



980 RPM