
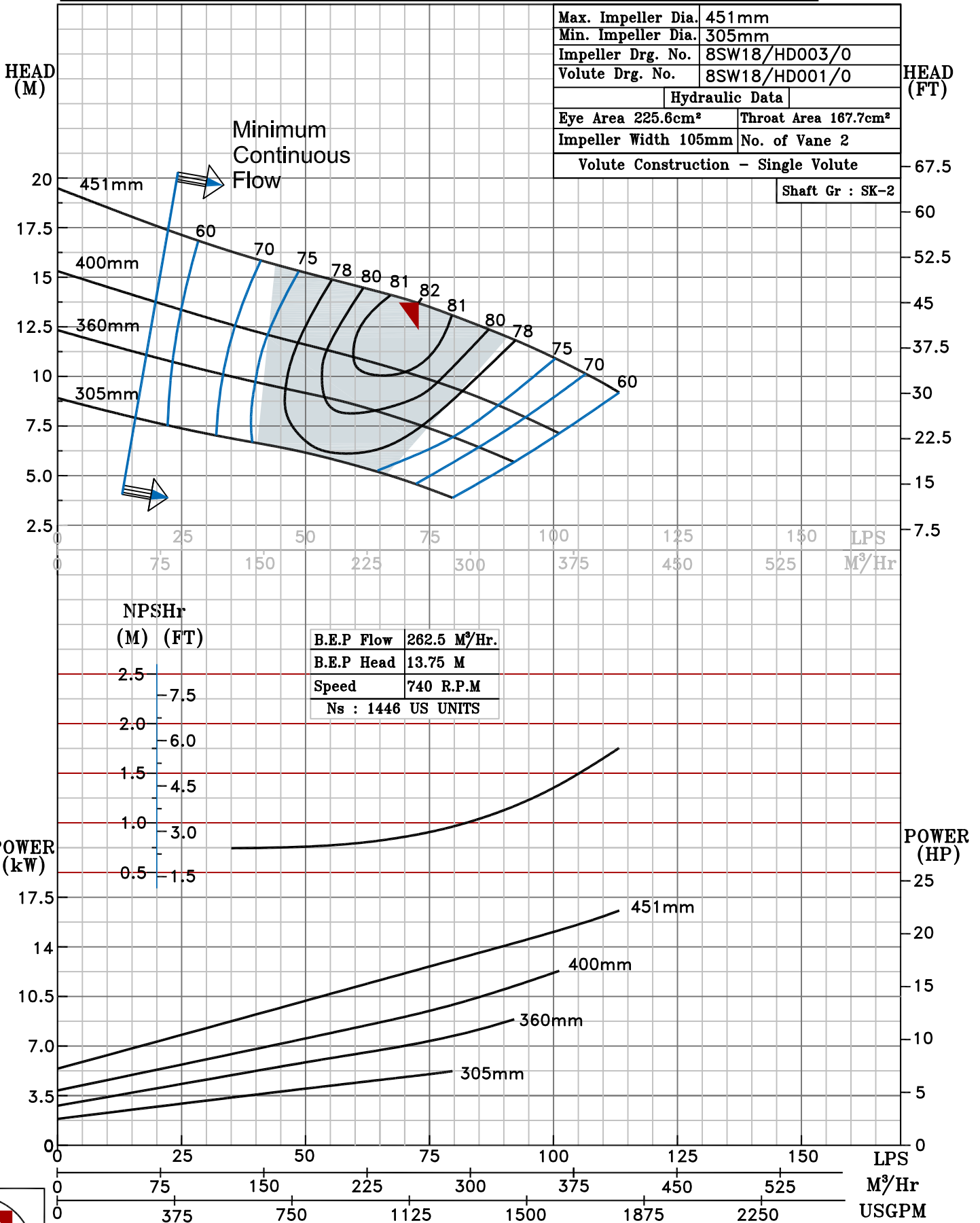


NOTE- PERFORMANCE AS PER ISO 9906 GRADE-2B

PERFORMANCE CURVE OF 8SW18 @740 R.P.M		8SW18/X/601758	
 <b>PUMPSENSE</b> <i>SW RANGE</i>	<b>MODEL 8SW18</b>	WORKING PRESS.	12 bar
	SIZE 250x200-451	TEST PRESS.	18 bar
	TYPE-DRY PIT NON-CLOG SEWAGE PUMP		SPEED 740 rpm
SPHERE SIZE - 75 MM			

SHADED REGION ON THE H-Q CURVE REPRESENTS OPTIMUM SELECTION ZONE  
 PUMP PERFORMANCE CHARACTERISTICS COMPUTED BASED ON CLEAN COLD WATER S.G 1.0

Max. Impeller Dia.	451mm
Min. Impeller Dia.	305mm
Impeller Drg. No.	8SW18/HD003/0
Volute Drg. No.	8SW18/HD001/0
Hydraulic Data	
Eye Area 225.6cm <sup>2</sup>	Throat Area 167.7cm <sup>2</sup>
Impeller Width 105mm	No. of Vane 2
Volute Construction - Single Volute	
Shaft Gr : SK-2	



740 RPM