
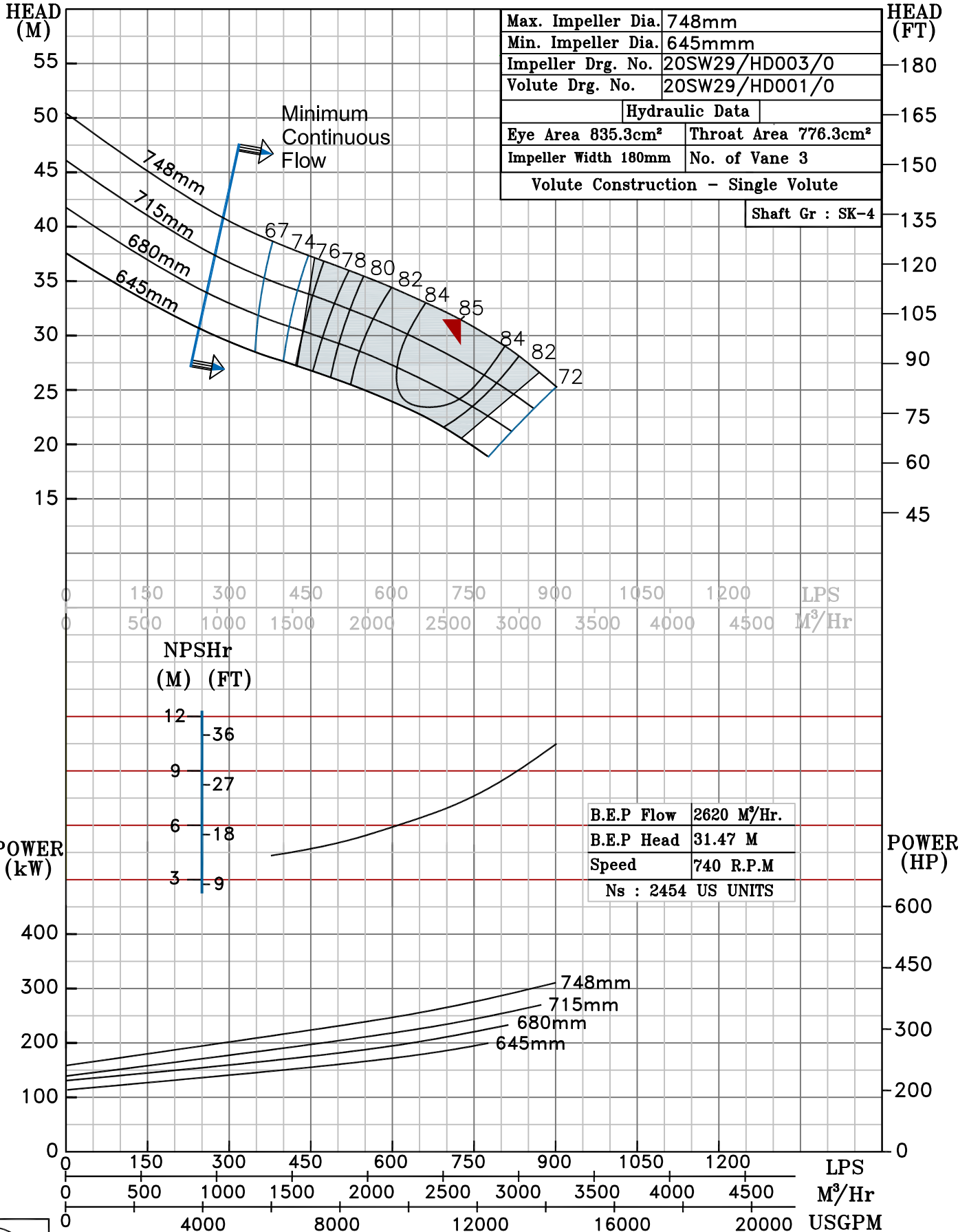


NOTE- PERFORMANCE AS PER ISO 9906 GRADE-2B

PERFORMANCE CURVE OF 20SW29 @740 R.P.M		20SW29/X/603958	
 PUMPSENSE <i>SW RANGE</i>	MODEL 20SW29	WORKING PRESS.	12 bar
	SIZE 600x500-748	TEST PRESS.	18 bar
		TYPE-DRY PIT NON-CLOG SEWAGE PUMP	
		MAX. SPHERE SIZE - 130MM	SPEED 740 rpm

SHADED REGION ON THE H-Q CURVE REPRESENTS OPTIMUM SELECTION ZONE

PUMP PERFORMANCE CHARACTERISTICS COMPUTED BASED ON CLEAN COLD WATER S.G 1.0



740 RPM