

NOTE- PERFORMANCE AS PER ISO 9906 GRADE-2B

PERFORMANCE CURVE OF 10SW22 @1480 R.P.M

10SW22/X/602654

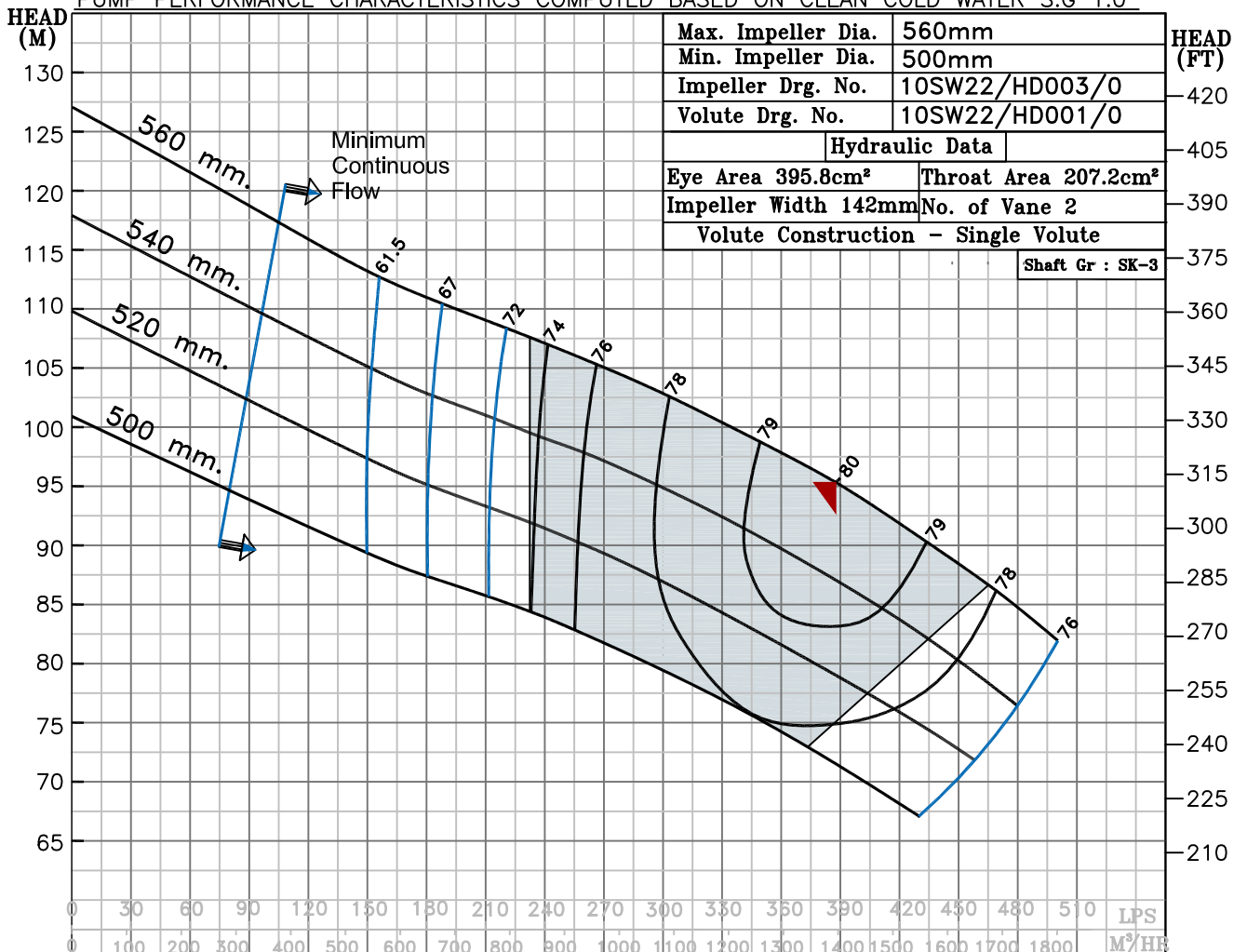


PUMPSENSE

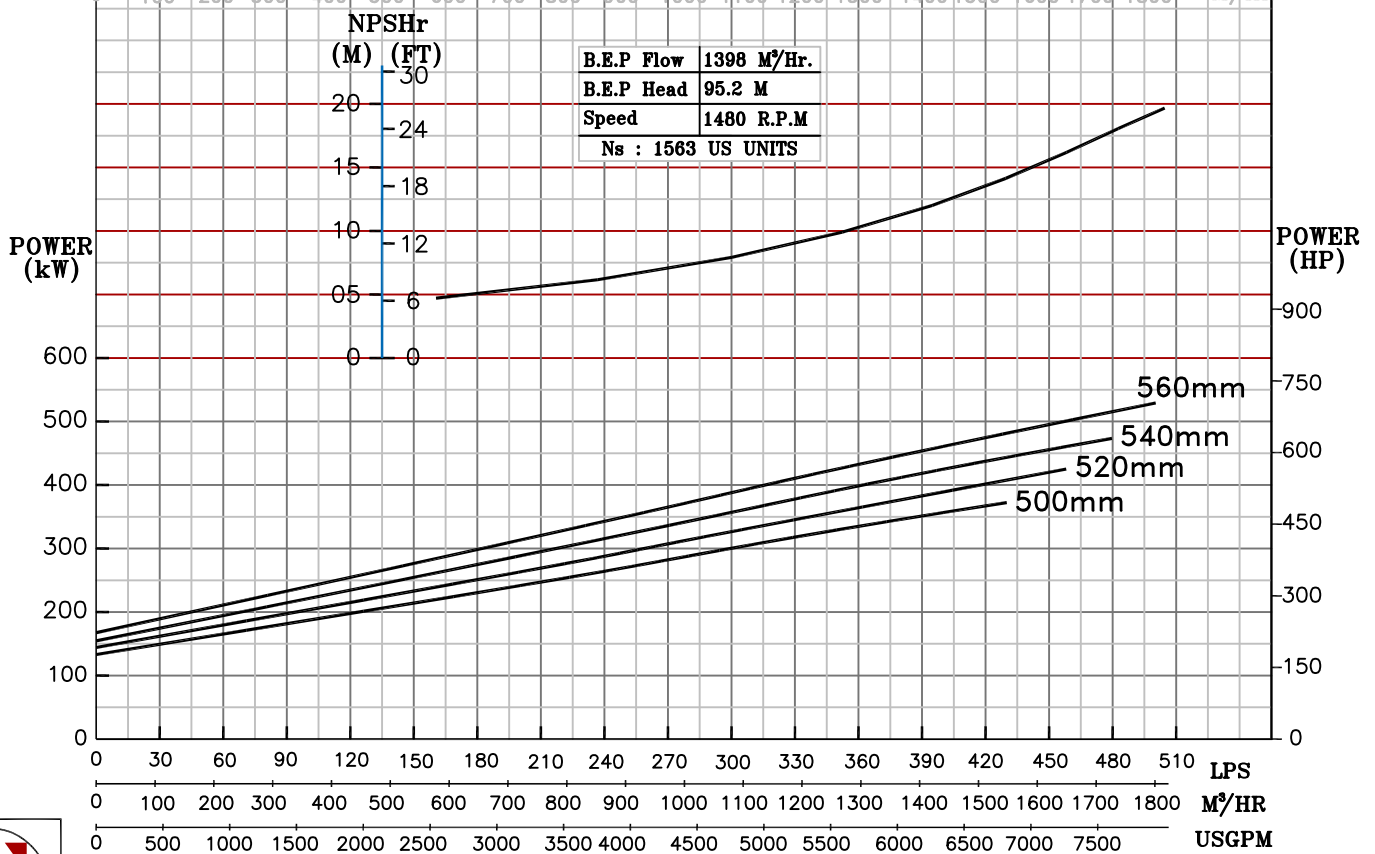
SW RANGE

MODEL 10SW22	WORKING PRESS. 16 bar
SIZE 300x250-560	TEST PRESS. 24 bar
TYPE-DRY PIT NON-CLOG SEWAGE PUMP	
MAX. SPHERE SIZE - 100MM	SPEED 1480 rpm

SHADED REGION ON THE H-Q CURVE REPRESENTS OPTIMUM SELECTION ZONE  
 PUMP PERFORMANCE CHARACTERISTICS COMPUTED BASED ON CLEAN COLD WATER S.G 1.0



B.E.P Flow	1398 M <sup>3</sup> /Hr.
B.E.P Head	95.2 M
Speed	1480 R.P.M
Ns	1563 US UNITS



1480 RPM