

NOTE- PERFORMANCE AS PER ISO 9906 GRADE-2B

PERFORMANCE CURVE OF EMF 400-384 @740 R.P.M

EMF 400-384/Y/505458



PUMPSENSE

EMF RANGE

MODEL EMF 400-384

WORKING PRESS. 16 bar

SIZE 400x400-384

TEST PRESS. 24 bar

TYPE-MIXED FLOW TYPE PUMP

SPEED 740 rpm

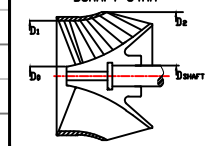
SHADED REGION ON THE H-Q CURVE REPRESENTS OPTIMUM SELECTION ZONE

PUMP PERFORMANCE CHARACTERISTICS COMPUTED BASED ON CLEAN COLD WATER S.G 1.0

Max. Impeller Dia.	385mmx15°
Min. Impeller Dia.	346mmx28.4°
Impeller Drg. No.	EMF 400-384/HD003/0
Volute Drg. No.	EMF 400-384/HD001/0
Hydraulic Data	
Eye Area	843.6cm ²
Throat Area	1152cm ²
Impeller Width	131.75mm
No. of Vane	4
Volute Construction - Single Volute	

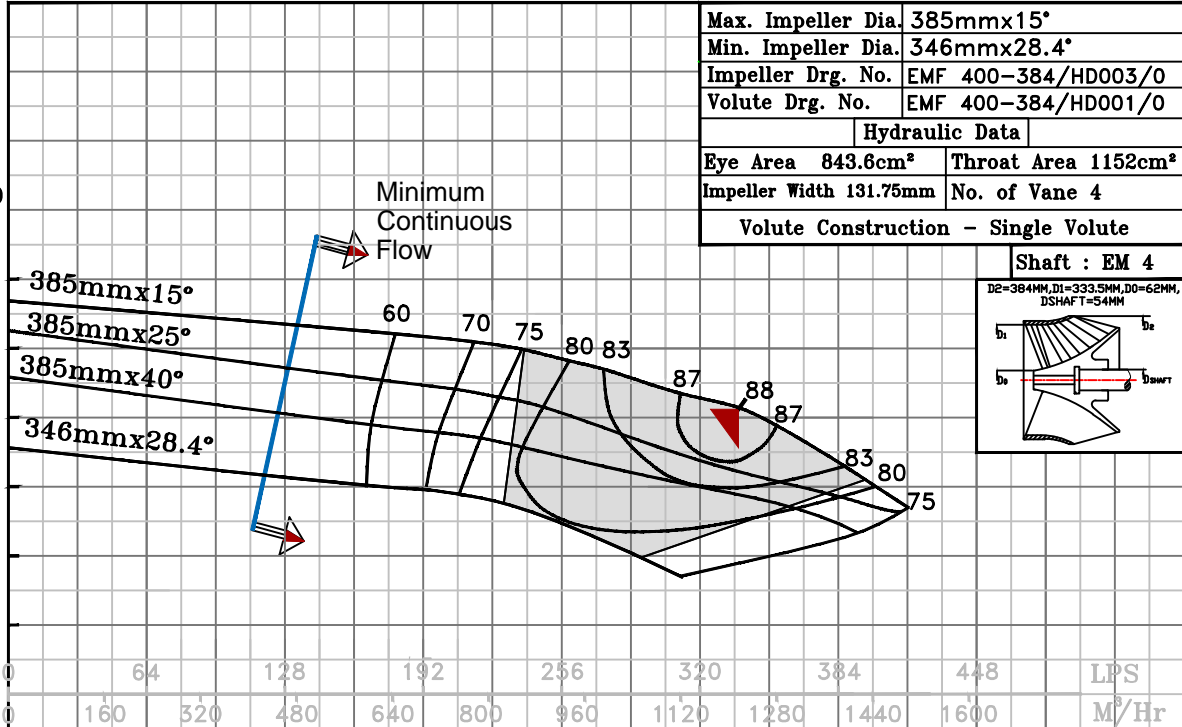
Shaft : EM 4

D2=384MM, D1=333.5MM, D0=62MM, DSHAFT=54MM



HEAD
(M)

HEAD
(FT)

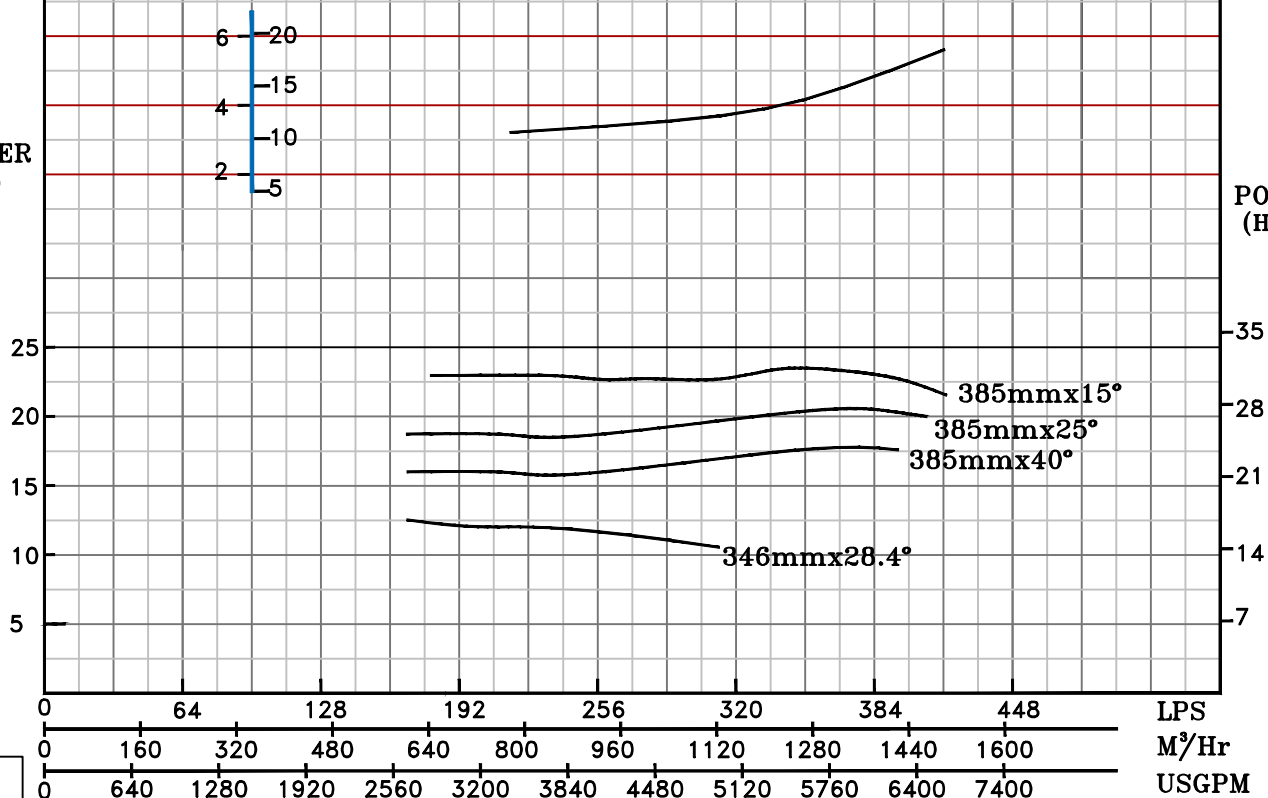


B.E.P Flow	1208.1 M³/Hr.
B.E.P Head	6.22 M
Speed	740 R.P.M
Ns : 5626 US UNITS	

NPSHR
(m) (ft)

POWER
(kW)

POWER
(HP)



740 RPM