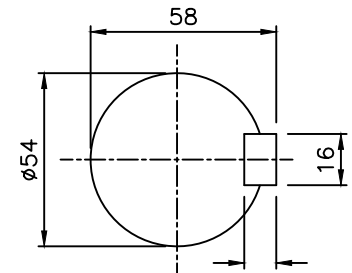
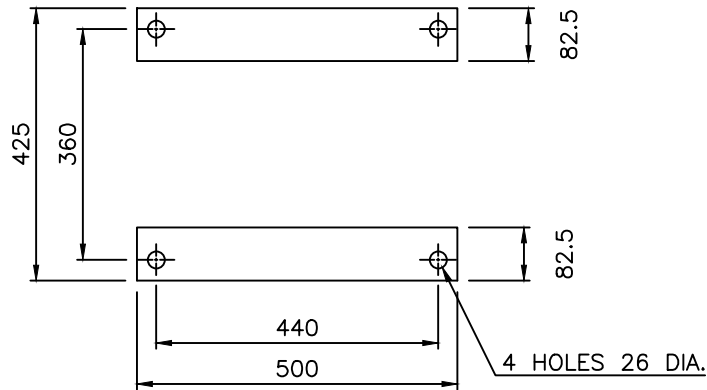


CLOCK-WISE ROTATION  
LOOKING FROM DRIVE END



SCALE - 5:1<sup>10</sup>  
SHAFT DETAIL AT  
COUPLING END

VIEW IN DIRECTION OF ' Z '



PLAN OF PUMP FEET

APPROX. NET WEIGHT - 620.5kg.  
ALL DIMENSIONS ARE IN MM.



CONNECTIONS

ITEM	DESCRIPTION	SIZE(NPT)
GD	GLAND DRAIN	3/4"
CG	COMPOUND GAUGE FOR SUCTION	3/8"
PG	PRESSURE GAUGE FOR DELIVERY	3/8"
AC	AIR COCK	3/8"
PM	PRIMING	1"
CDS	CASING DRAIN(SUCTION SIDE)	3/4"
CDD	CASING DRAIN(DELIVERY SIDE)	3/4"

REF. NO.	TYPE OF FLANGE.	O.D.	P.C.D.	THK MIN	NO. OF HOLES	RF Ø	RF THK	R.F. FLANGE	O.D.	P.C.D.	THK MIN	NO. OF HOLES	RF Ø	RF THK	R.F. FLANGE
S	ANSI 125#FF	16"	14-1/4"	1-3/16"	12, Ø1"	-	-	-	15"	13"	1-5/8"	12, Ø1"	-	-	-
D	ANSI 250#FF														
		SUCTION 250 DIA.				DELIVERY 200 DIA									

PUMPSENSE										TITLE-		SCALE		
GA DRAWING FOR 8HF13										1:1		REV		
1	CASING FEET PATTERN CHANGED FEET THICKNESS 25MM INSTEAD OF 24 MM				AD	ST	17.05.18	DRN	AD	21.12.16	DRG. NO.		PSF/8HF13/GA-01	
REV	DESCRIPTION				DRN	CHKD	DATE	APPD	HS	21.12.16			1	