

PERFORMANCE CURVE OF 6HF10 @ 2950 R.P.M



HS RANGE

MODEL 6HF10



SIZE 150x150-255

TYPE-AXIALLY SPLIT CASE SINGLE STAGE

RATED DUTY - 1000,1250 USGPM

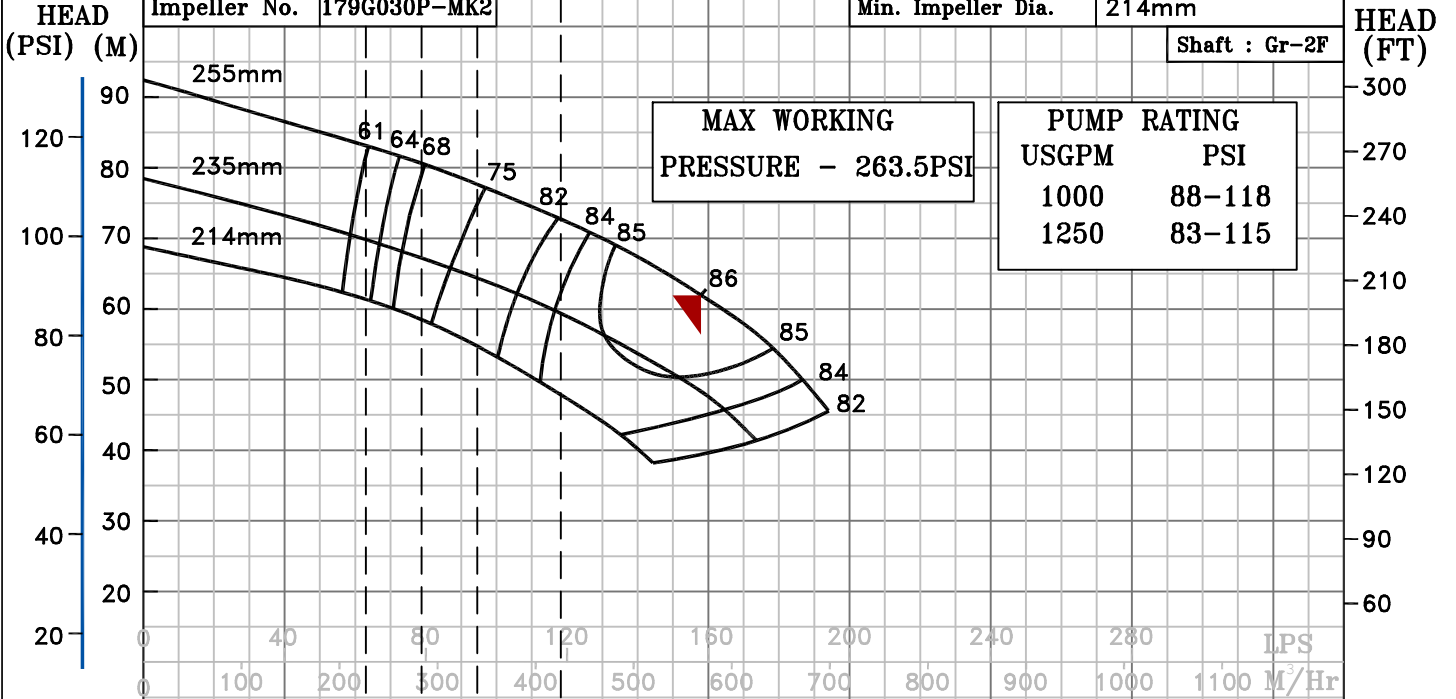
SPEED 2950 rpm

TEST DATE- 13.07.21

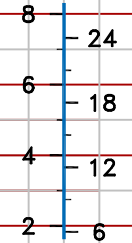
PUMP PERFORMANCE CHARACTERISTICS COMPUTED BASED ON CLEAN COLD WATER S.G 1.0

Curve No.	107952-FM3	Max. Impeller Dia.	255mm
Impeller No.	179G030P-MK2	Min. Impeller Dia.	214mm

Shaft : Gr-2F



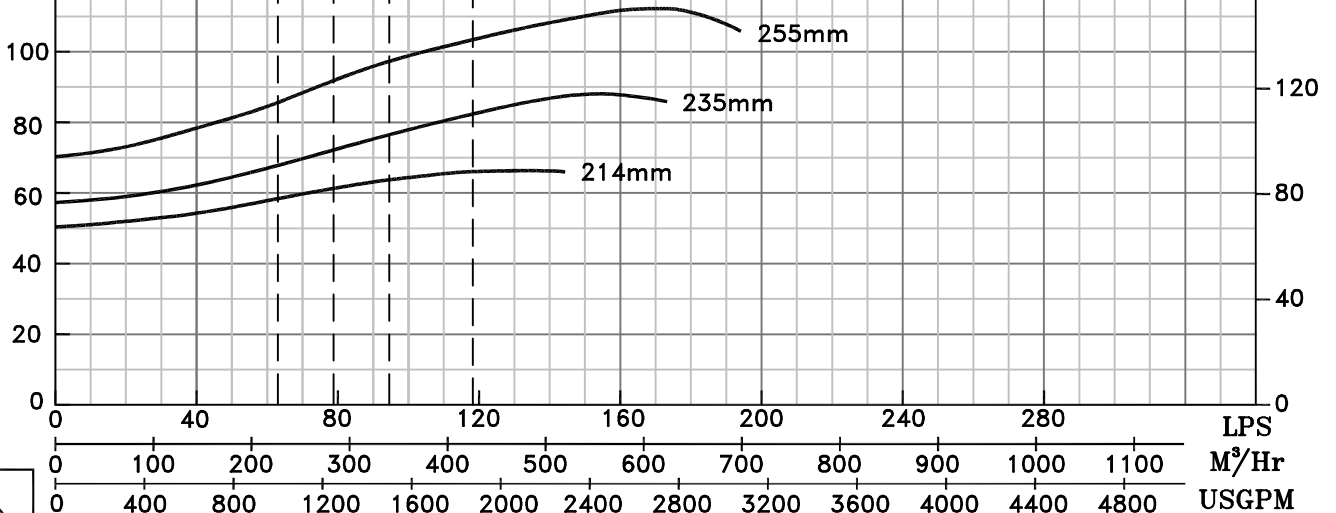
NPSHr (M) (FT)



B.E.P Flow	569 M³/Hr.
B.E.P Head	62 M
Speed	2950 R.P.M
Ns	: 2741 US UNITS

POWER (kW)

POWER (HP)



2950 RPM