

NOTE- PERFORMANCE AS PER ISO 9906 GRADE-2B

PERFORMANCE CURVE OF 6HST18 @1780 R.P.M

6HST18/X/311564

**HST RANGE****MODEL 6HST18**

WORKING PRESS 30 bar

SIZE 200x150-460

TEST PRESS. 45 bar

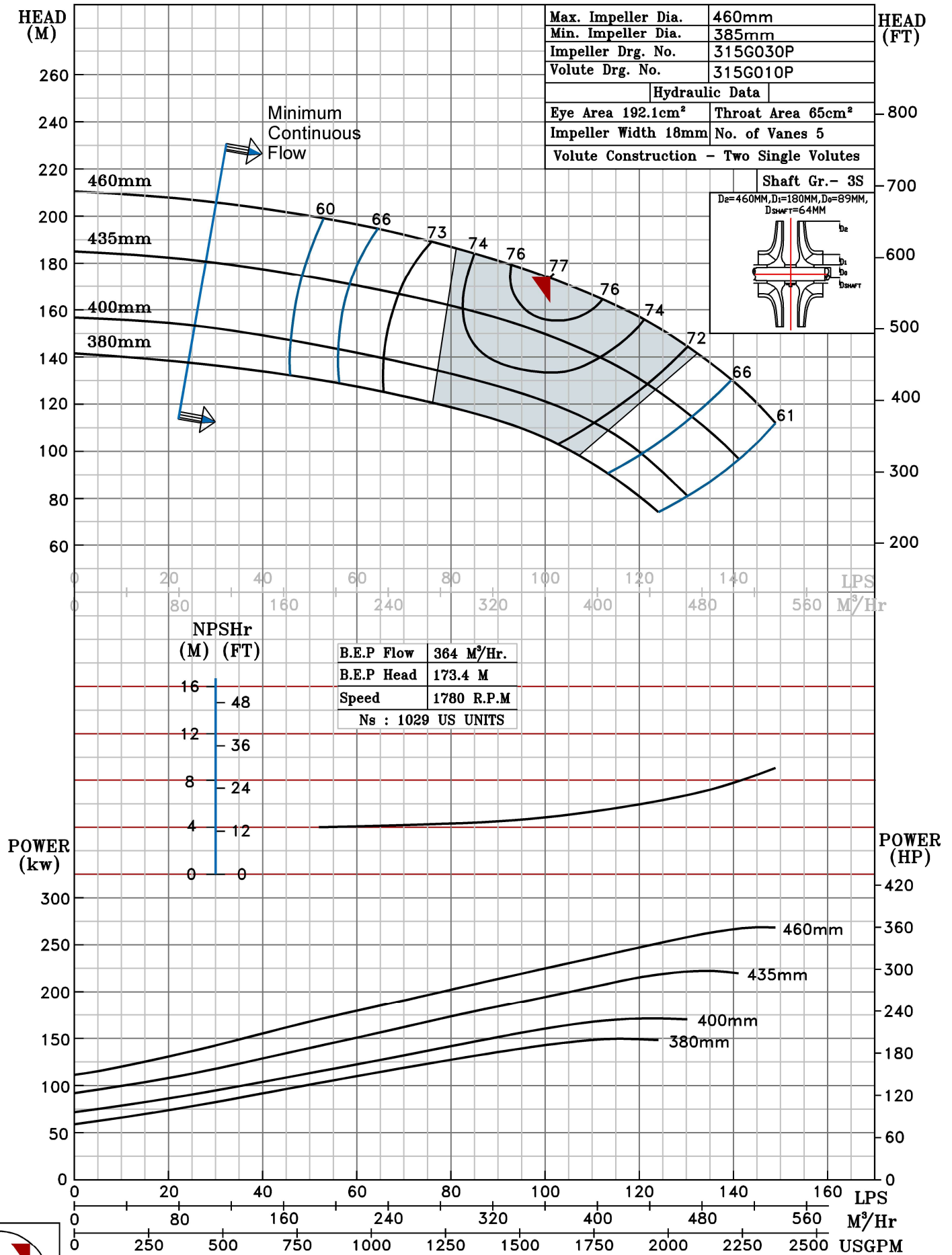
TYPE-AXIALLY SPLIT CASE TWO STAGE

SPEED 1780 rpm

DATE - 16.02.18

SHADED REGION ON THE H-Q CURVE REPRESENTS OPTIMUM SELECTION ZONE

PUMP PERFORMANCE CHARACTERISTICS COMPUTED BASED ON CLEAN COLD WATER S.G 1.0



1780 RPM