

NOTE- PERFORMANCE AS PER ISO 9906 GRADE-2B

PERFORMANCE CURVE OF 2.5HST9 @1780 R.P.M

2.5HST9/X/300164

*HST RANGE***MODEL 2.5HST9**

WORKING PRESS. 17 bar

SIZE 80x65-230

TEST PRESS. 25.5 bar

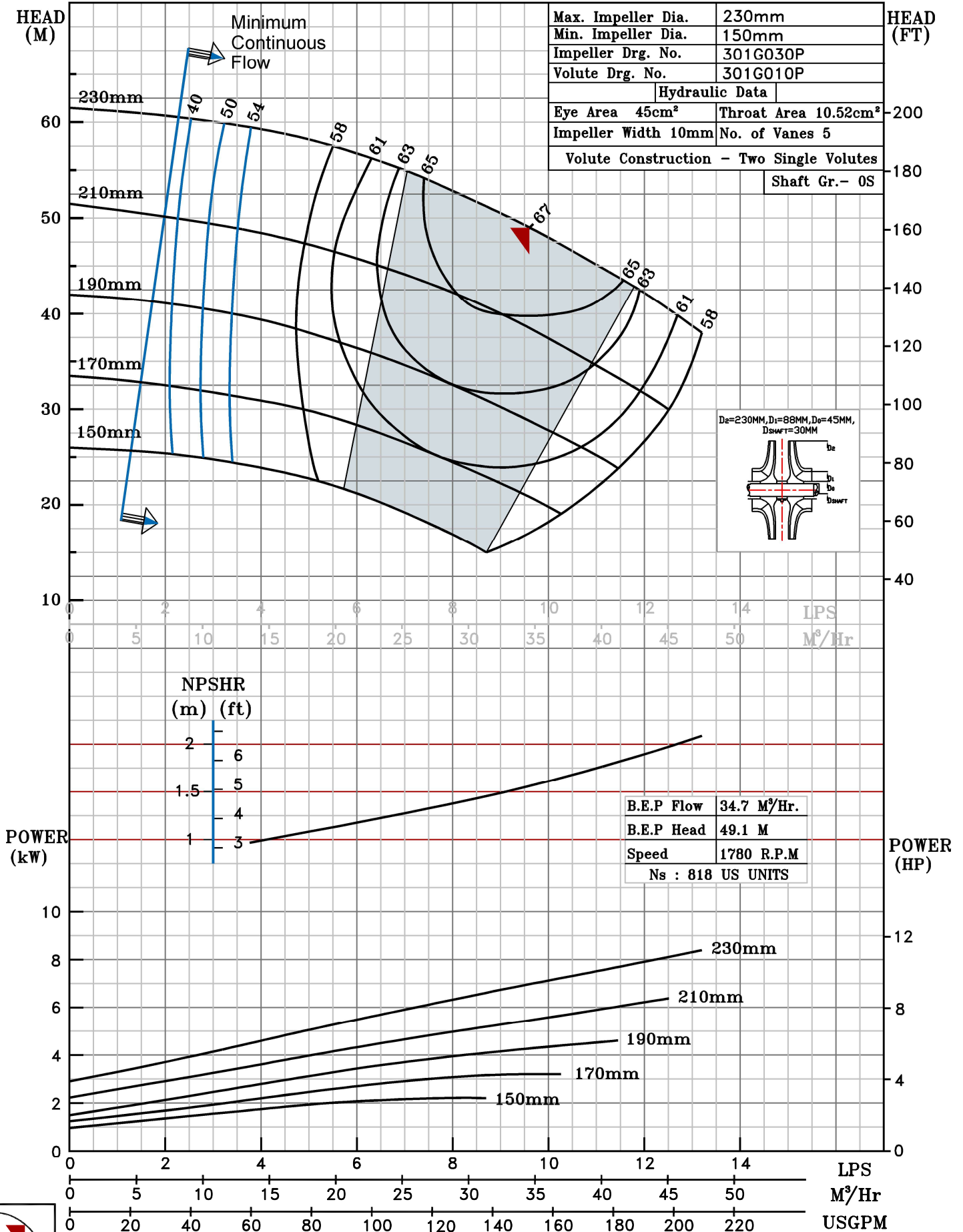
TYPE-AXIALLY SPLIT CASE TWO STAGE

SPEED 1780 rpm

DATE - 10.12.14

SHADED REGION ON THE H-Q CURVE REPRESENTS OPTIMUM SELECTION ZONE

PUMP PERFORMANCE CHARACTERISTICS COMPUTED BASED ON CLEAN COLD WATER S.G 1.0



1780 RPM