
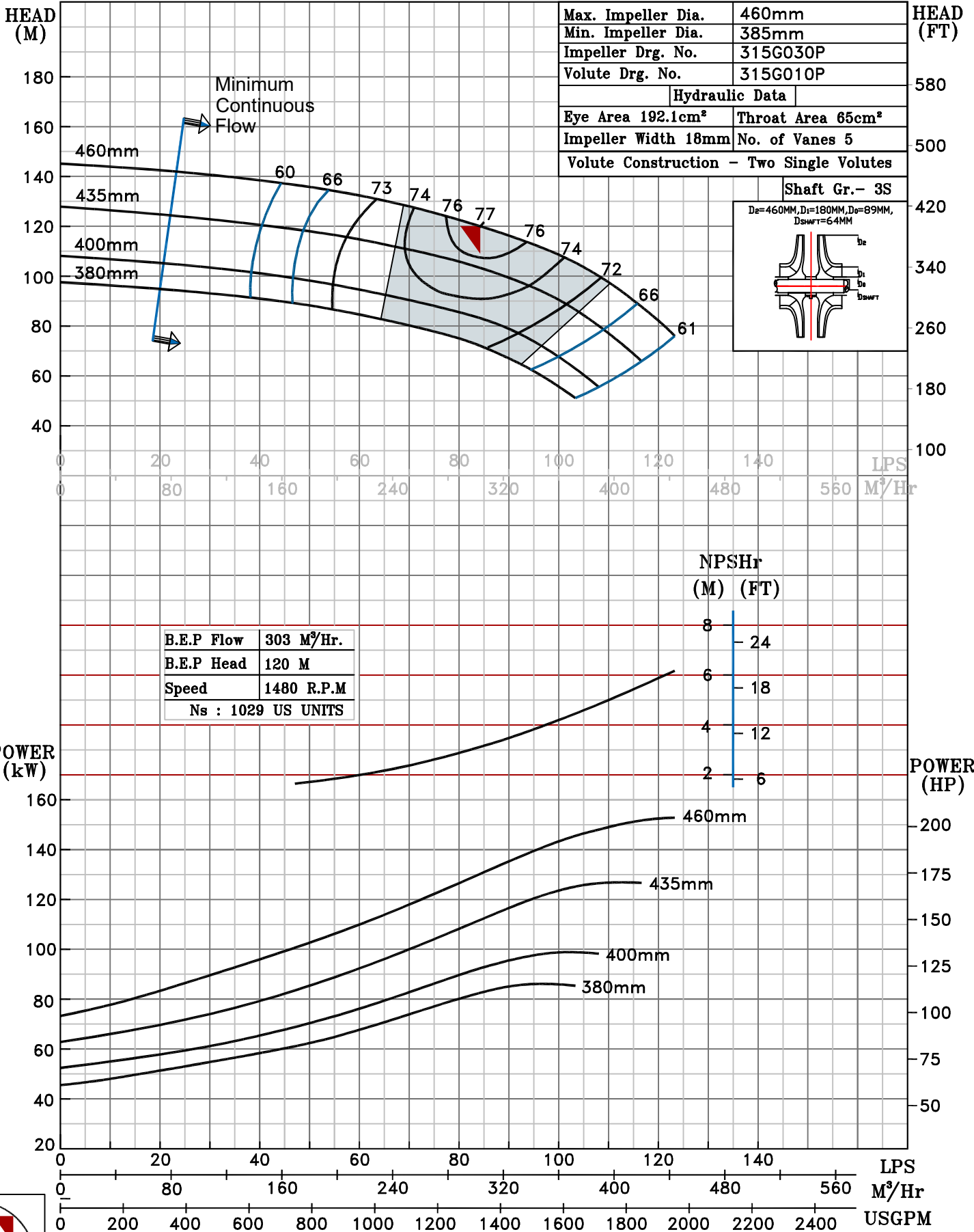
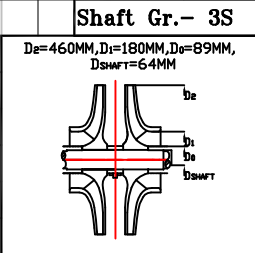


NOTE- PERFORMANCE AS PER ISO 9906 GRADE-2B

PERFORMANCE CURVE OF 6HST18 @1480 R.P.M		6HST18/X/311554	
 <b>PUMPSENSE</b> <i>HST RANGE</i>	<b>MODEL</b> 6HST18	WORKING PRESS. 20 bar	
	SIZE 200x150-460	TEST PRESS. 30 bar	
	TYPE-AXIALLY SPLIT CASE TWO STAGE		SPEED 1480 rpm
SHADED REGION ON THE H-Q CURVE REPRESENTS OPTIMUM SELECTION ZONE			DATE - 16.02.18

PUMP PERFORMANCE CHARACTERISTICS COMPUTED BASED ON CLEAN COLD WATER S.G 1.0

Max. Impeller Dia.	460mm
Min. Impeller Dia.	385mm
Impeller Drg. No.	315G030P
Volute Drg. No.	315G010P
Hydraulic Data	
Eye Area 192.1cm <sup>2</sup>	Throat Area 65cm <sup>2</sup>
Impeller Width 18mm	No. of Vanes 5
Volute Construction - Two Single Volutes	



1480 RPM