

NOTE- PERFORMANCE AS PER ISO 9906 GRADE-2B

PERFORMANCE CURVE OF 18HS25 @980 R.P.M

18HS25/X/106156

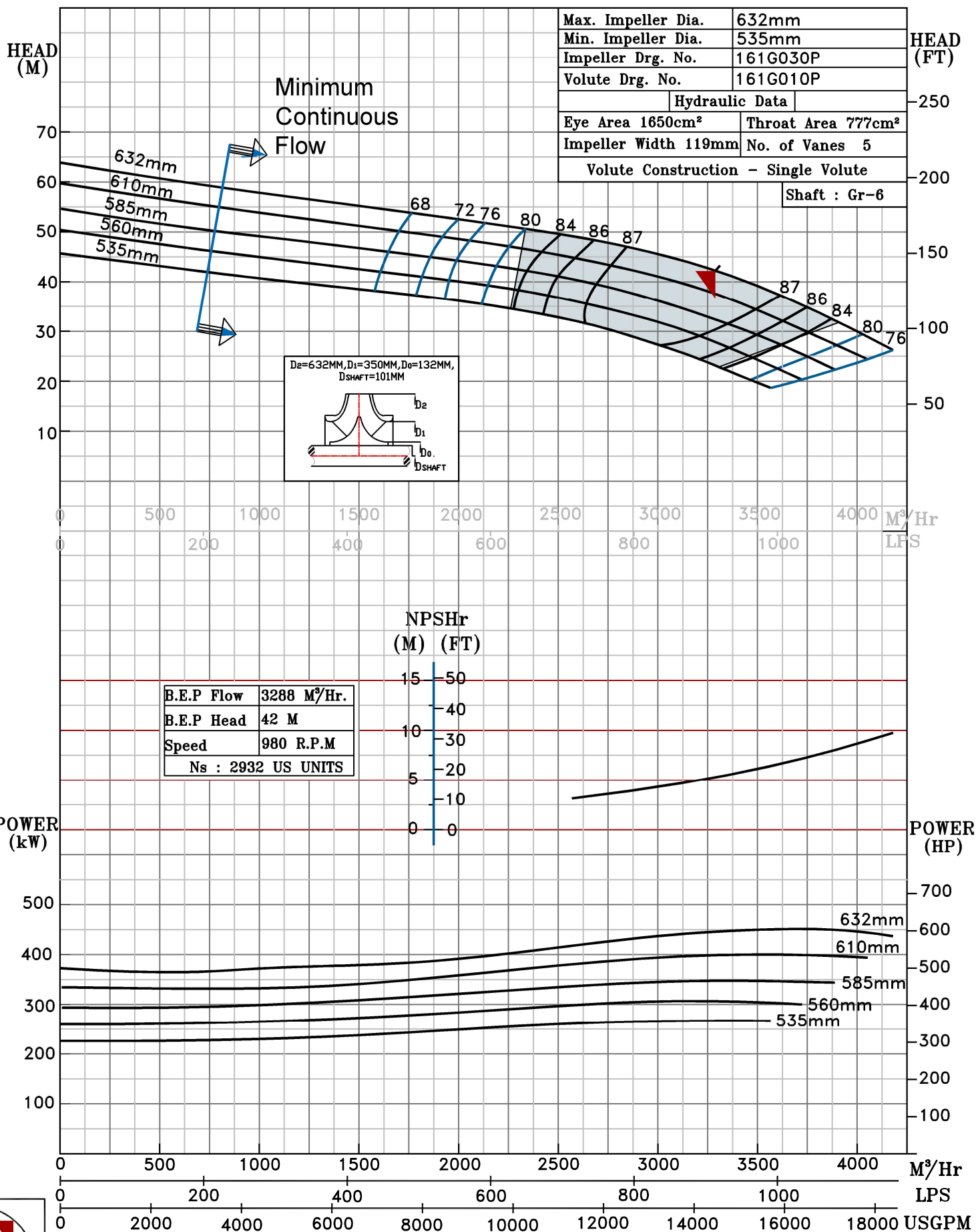


HS RANGE

MODEL	18HS25	WORKING PRESS.	10 bar
SIZE	500x450-632	TEST PRESS.	15 bar
TYPE-AXIALLY SPLIT CASE SINGLE STAGE		SPEED	980 rpm
		DATE	- 06.10.2022

SHADED REGION ON THE H-Q CURVE REPRESENTS OPTIMUM SELECTION ZONE

PUMP PERFORMANCE CHARACTERISTICS COMPUTED BASED ON CLEAN COLD WATER S.G 1.0



Max. Impeller Dia.	632mm
Min. Impeller Dia.	535mm
Impeller Drg. No.	161G030P
Volute Drg. No.	161G010P
Hydraulic Data	
Eye Area 1650cm ²	Throat Area 777cm ²
Impeller Width 119mm	No. of Vanes 5
Volute Construction - Single Volute	
Shaft : Gr-6	

B.E.P Flow	3288 M ³ /Hr.
B.E.P Head	42 M
Speed	980 R.P.M
Ns	: 2932 US UNITS

NPSH _r	
(M)	(FT)
15	50
10	30
5	20
0	0

980 RPM

