

NOTE- PERFORMANCE AS PER ISO 9906 GRADE-2B

PERFORMANCE CURVE OF 16HS28 @980 R.P.M

16HS28/X/105856

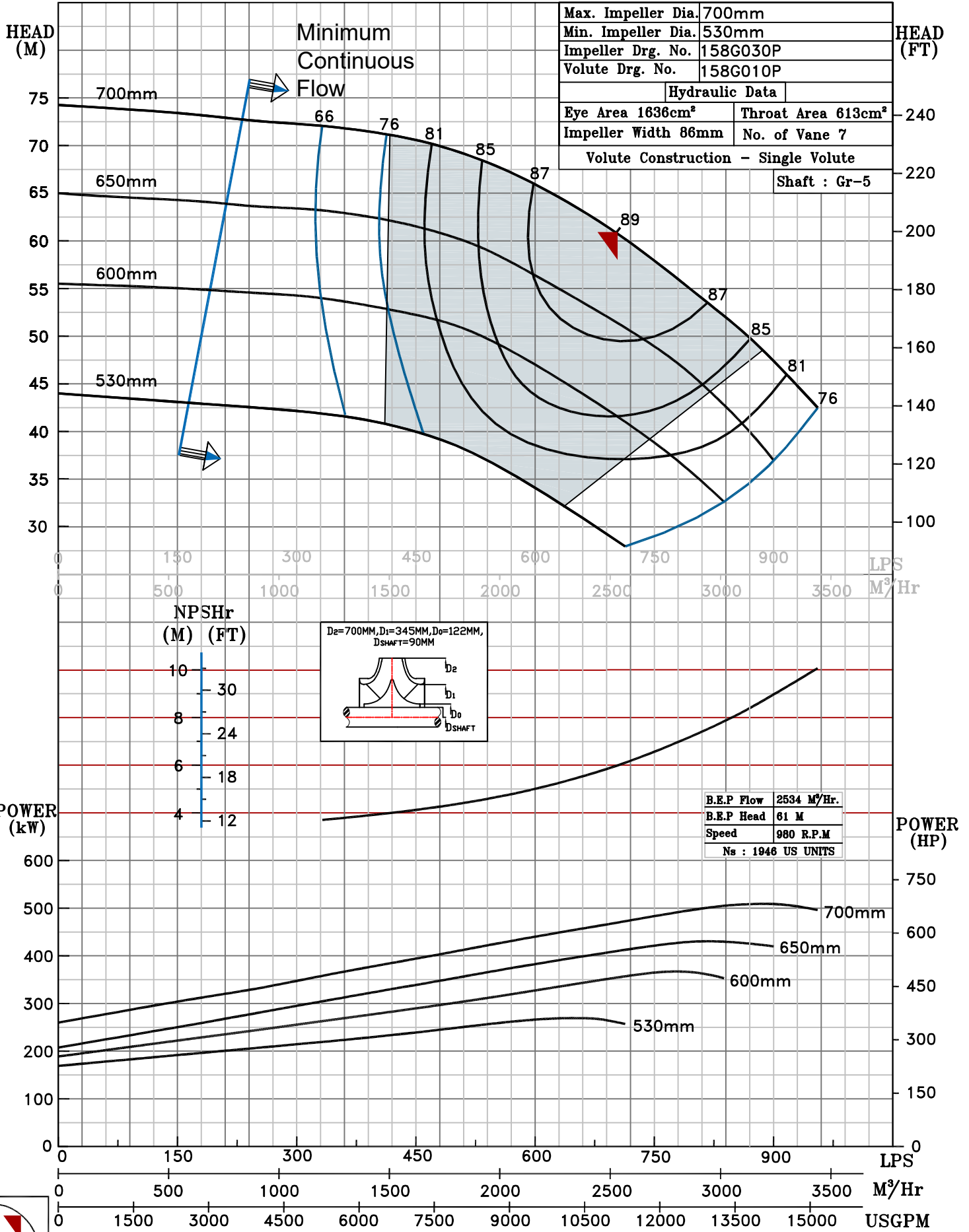


HS RANGE

MODEL 16HS28	WORKING PRESS. 16 bar
SIZE 450x400-700	TEST PRESS. 24 bar
TYPE-AXIALLY SPLIT CASE SINGLE STAGE	
SPEED 980 rpm	
DATE - 06.10.2022	

SHADED REGION ON THE H-Q CURVE REPRESENTS OPTIMUM SELECTION ZONE

PUMP PERFORMANCE CHARACTERISTICS COMPUTED BASED ON CLEAN COLD WATER S.G 1.0



980 RPM