

NOTE- PERFORMANCE AS PER ISO 9906 GRADE-2B

PERFORMANCE CURVE OF 16HS21H @980 R.P.M

16HS21H/X/105556

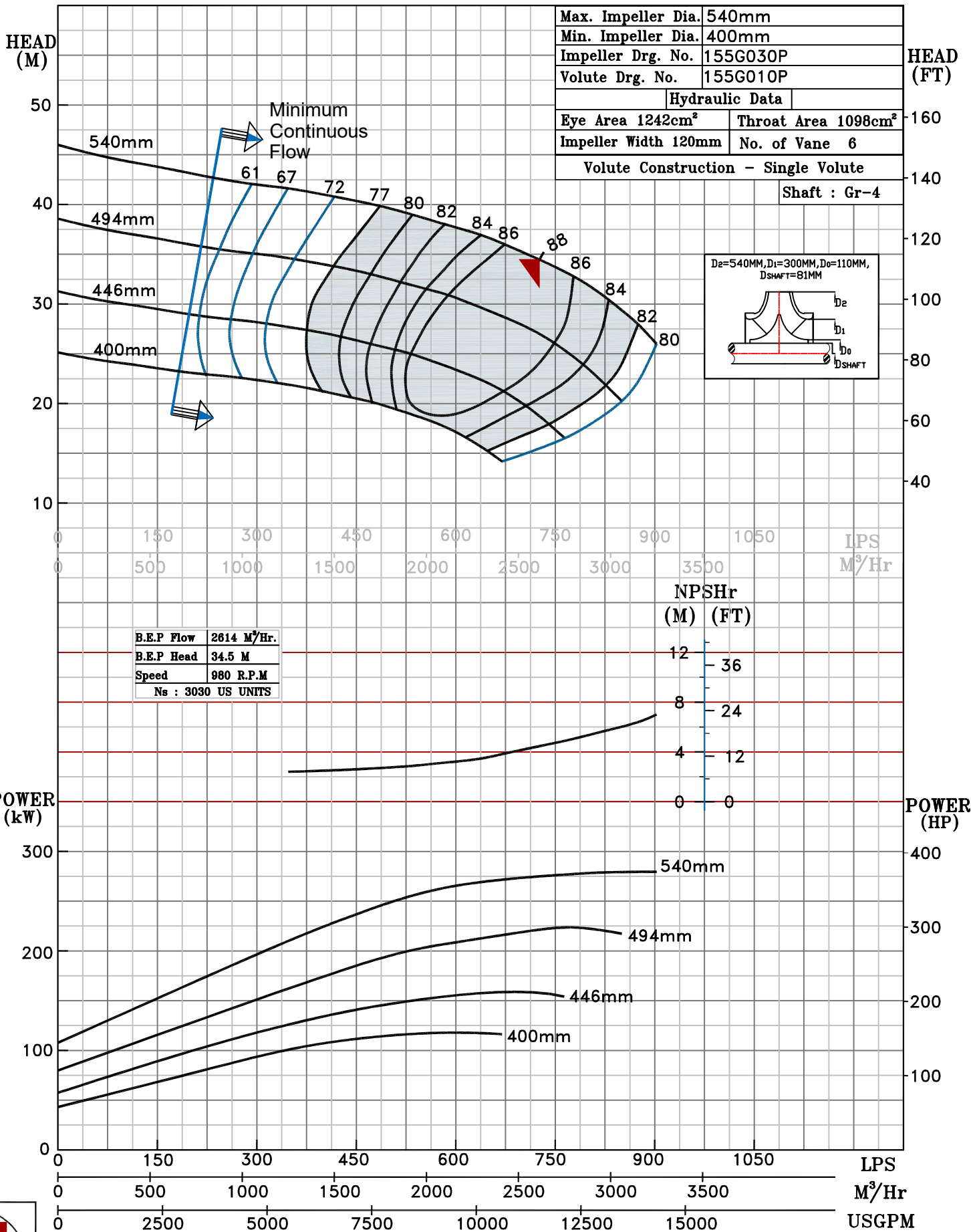


HS RANGE

MODEL 16HS21H	WORKING PRESS.	16 bar
SIZE 500x400-540	TEST PRESS.	24 bar
TYPE-AXIALLY SPLIT CASE SINGLE STAGE		
SPEED 980 rpm		
DATE - 06.10.2022		

SHADED REGION ON THE H-Q CURVE REPRESENTS OPTIMUM SELECTION ZONE

PUMP PERFORMANCE CHARACTERISTICS COMPUTED BASED ON CLEAN COLD WATER S.G 1.0



Max. Impeller Dia.	540mm
Min. Impeller Dia.	400mm
Impeller Drg. No.	155G030P
Volute Drg. No.	155G010P

Hydraulic Data

Eye Area 1242cm <sup>2</sup>	Throat Area 1098cm <sup>2</sup>
Impeller Width 120mm	No. of Vane 6
Volute Construction - Single Volute	

Shaft : Gr-4

B.E.P Flow	2614 M <sup>3</sup> /Hr.
B.E.P Head	34.5 M
Speed	980 R.P.M
Ns	3030 US UNITS

NPSHr (M) (FT)

12	36
8	24
4	12
0	0



980 RPM