

NOTE- PERFORMANCE AS PER ISO 9906 GRADE-2B

PERFORMANCE CURVE OF 16HS21 @980 R.P.M

16HS21/X/105456

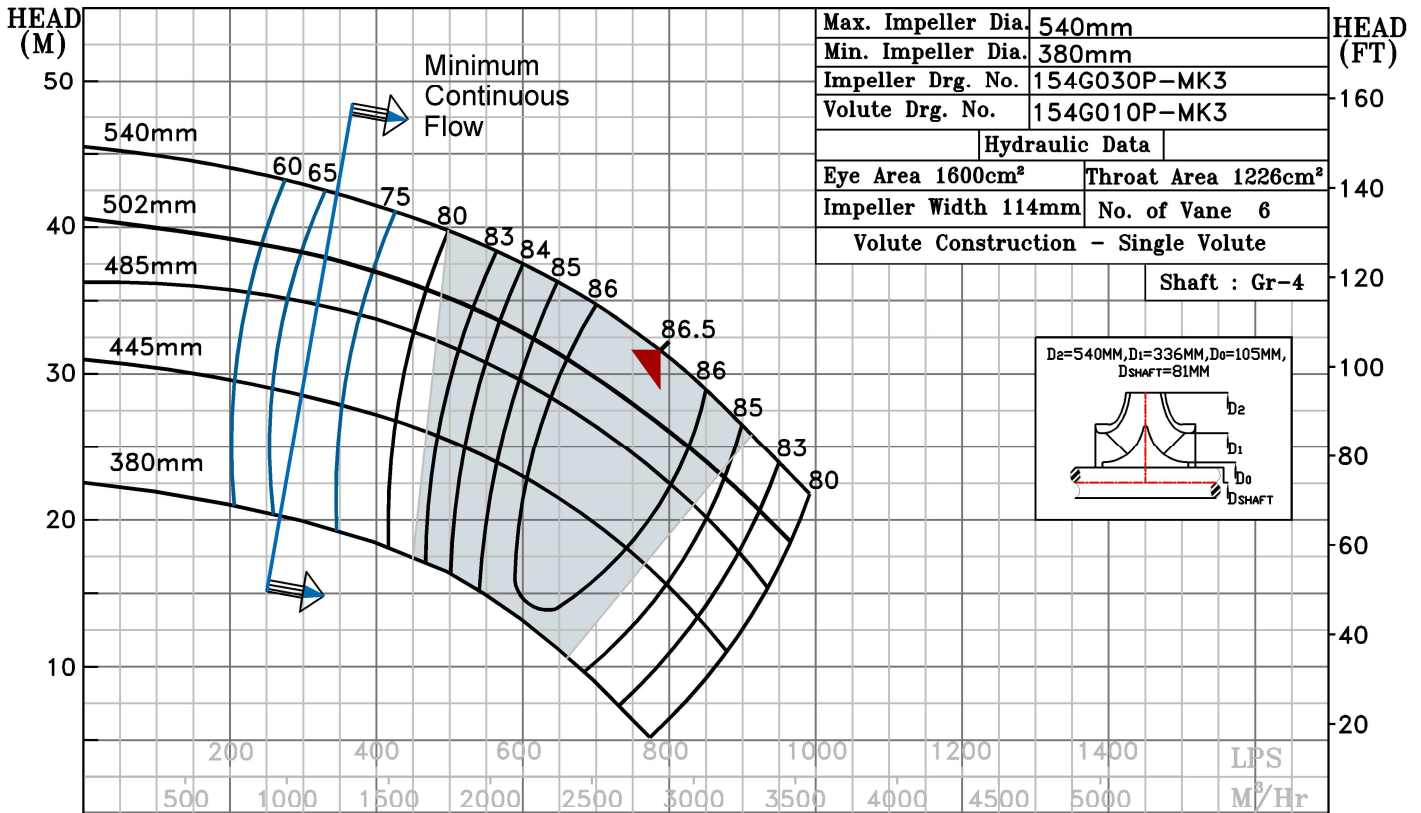


HS RANGE

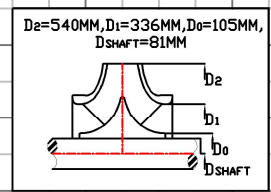
MODEL 16HS21	WORKING PRESS.	16 bar
SIZE 500x400-540	TEST PRESS.	24 bar
TYPE-AXIALLY SPLIT CASE SINGLE STAGE		SPEED 980 rpm
		DATE - 06.10.2022

SHADED REGION ON THE H-Q CURVE REPRESENTS OPTIMUM SELECTION ZONE

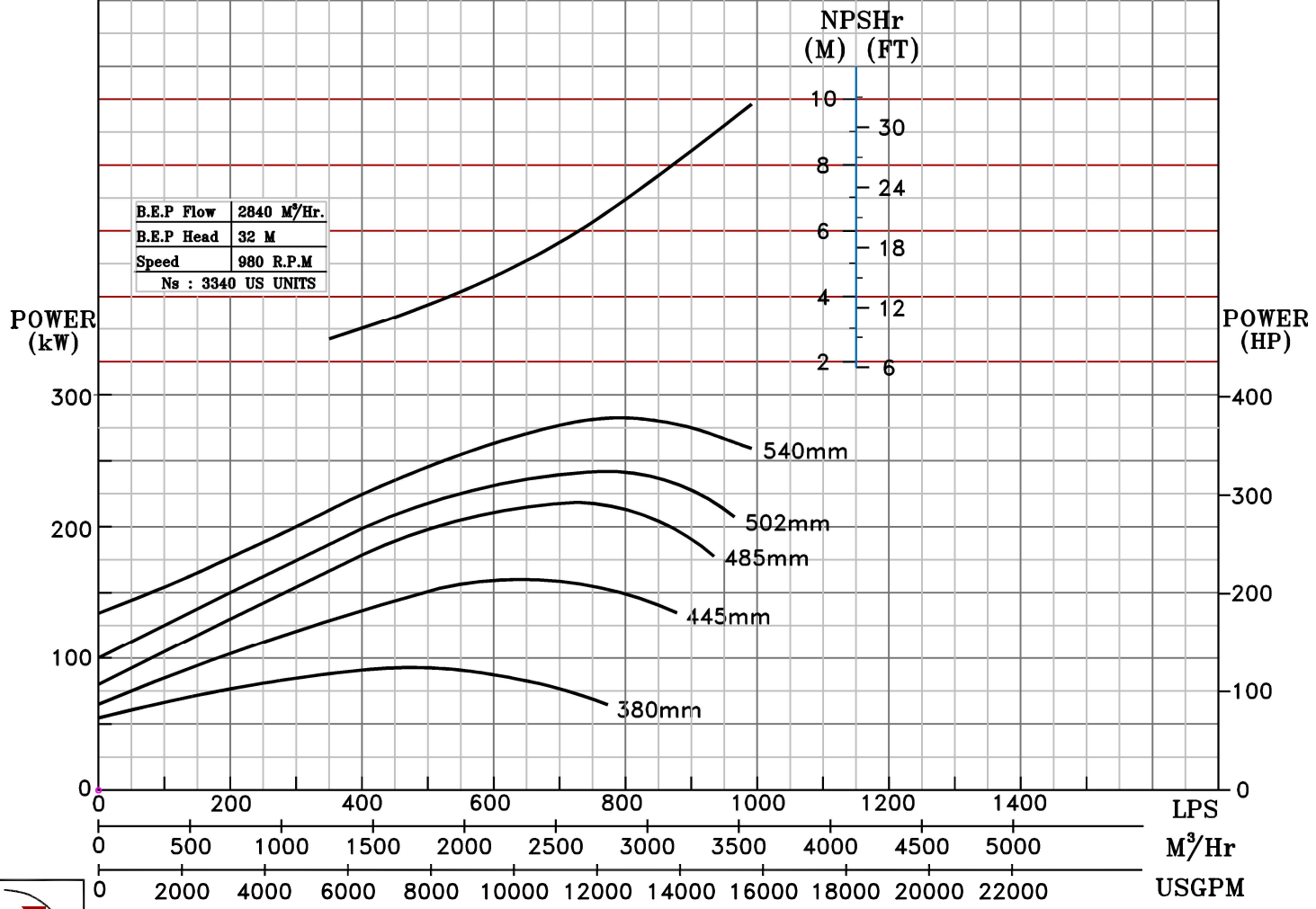
PUMP PERFORMANCE CHARACTERISTICS COMPUTED BASED ON CLEAN COLD WATER S.G 1.0



Max. Impeller Dia.	540mm	HEAD (FT)	160
Min. Impeller Dia.	380mm		
Impeller Drg. No.	154G030P-MK3		
Volute Drg. No.	154G010P-MK3		
Hydraulic Data			
Eye Area	1600cm²	Throat Area	1226cm²
Impeller Width	114mm	No. of Vane	6
Volute Construction - Single Volute			
Shaft : Gr-4			



B.E.P Flow	2840 M³/Hr.
B.E.P Head	32 M
Speed	980 R.P.M
Ns	3340 US UNITS



980 RPM