

NOTE- PERFORMANCE AS PER ISO 9906 GRADE-2B

PERFORMANCE CURVE OF 12HS22 @980 R.P.M

12HS22/X/104356

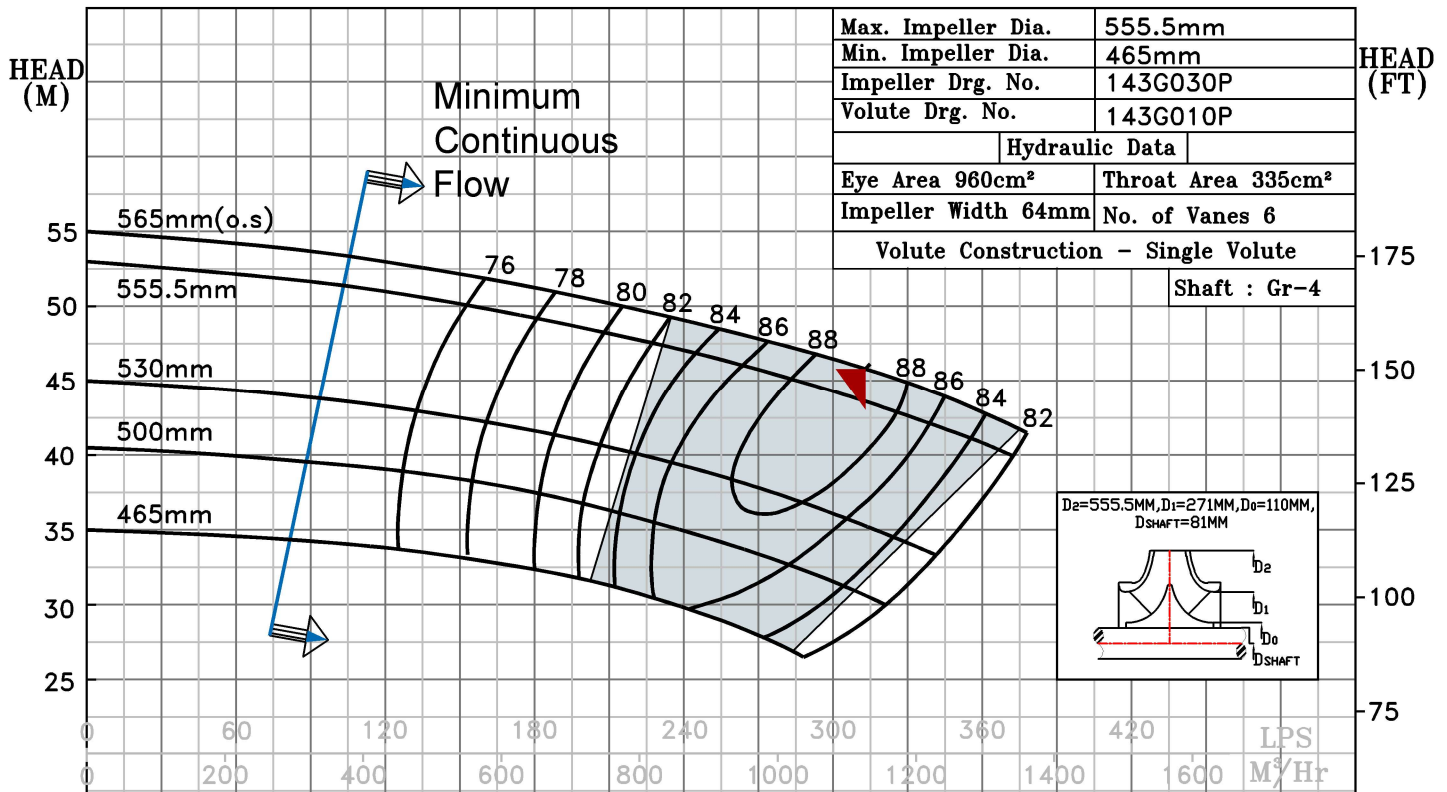


HS RANGE

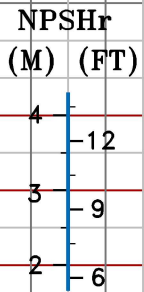
MODEL	12HS22	WORKING PRESS.	16 bar
SIZE	350x300-555.5	TEST PRESS.	24 bar
TYPE-AXIALLY SPLIT CASE SINGLE STAGE		SPEED	980 rpm
		DATE	- 06.10.2022

SHADED REGION ON THE H-Q CURVE REPRESENTS OPTIMUM SELECTION ZONE

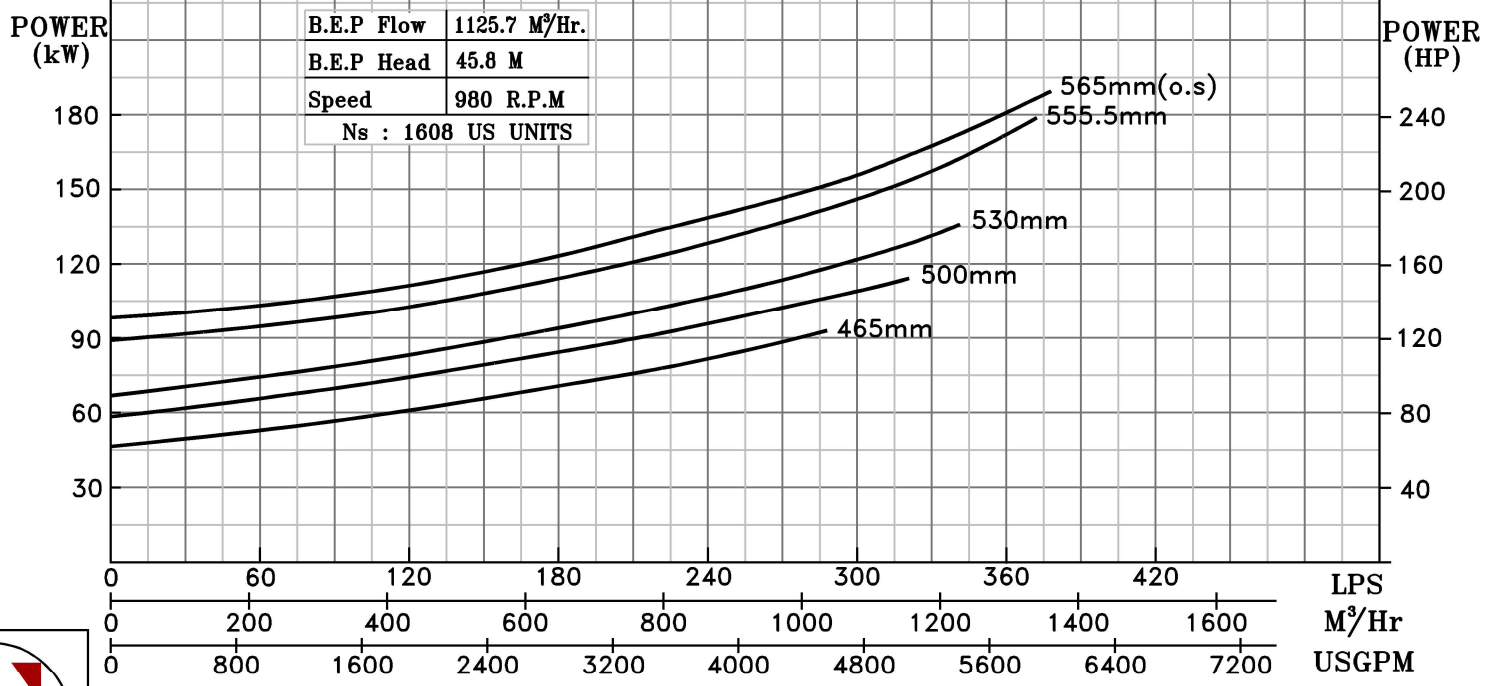
PUMP PERFORMANCE CHARACTERISTICS COMPUTED BASED ON CLEAN COLD WATER S.G 1.0



Max. Impeller Dia.	555.5mm
Min. Impeller Dia.	465mm
Impeller Drg. No.	143G030P
Volute Drg. No.	143G010P
Hydraulic Data	
Eye Area 960cm ²	Throat Area 335cm ²
Impeller Width 64mm	No. of Vanes 6
Volute Construction - Single Volute	
Shaft : Gr-4	



B.E.P Flow	1125.7 M ³ /Hr.
B.E.P Head	45.8 M
Speed	980 R.P.M
Ns	: 1608 US UNITS



980 RPM