

NOTE- PERFORMANCE AS PER ISO 9906 GRADE-2B

PERFORMANCE CURVE OF 10HS20 @980 R.P.M

10HS20/Y/107856

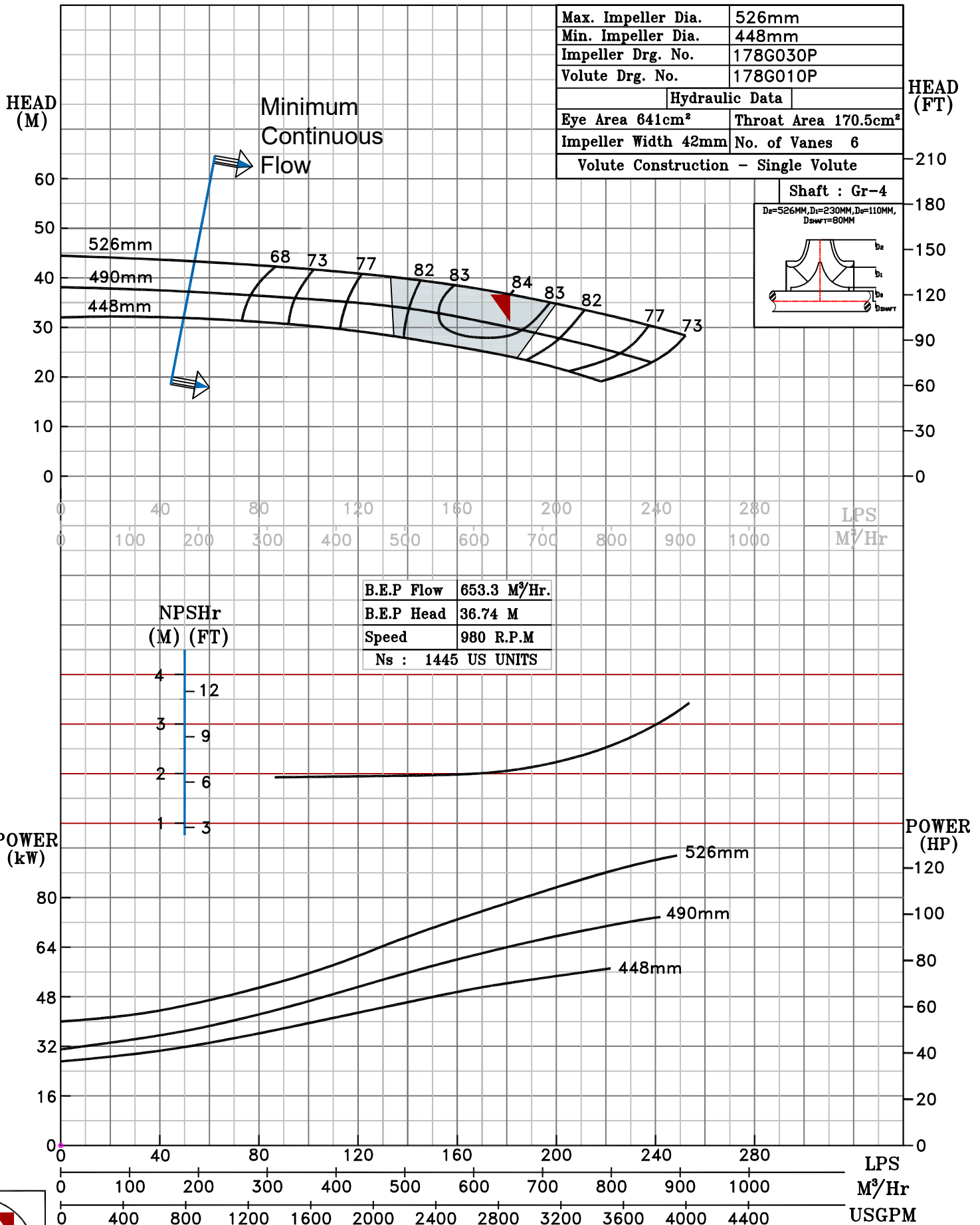


HS RANGE

<b>MODEL 10HS20</b>	WORKING PRESS.	20 bar
SIZE 300x250-526	TEST PRESS.	30 bar
TYPE-AXIALLY SPLIT CASE SINGLE STAGE		
SPEED 980 rpm		
DATE - 06.10.2022		

SHADED REGION ON THE H-Q CURVE REPRESENTS OPTIMUM SELECTION ZONE

PUMP PERFORMANCE CHARACTERISTICS COMPUTED BASED ON CLEAN COLD WATER S.G 1.0



980 RPM