

NOTE- PERFORMANCE AS PER ISO 9906 GRADE-2B

PERFORMANCE CURVE OF 10HS15 @980 R.P.M

10HS15/X/103556



HS RANGE

MODEL 10HS15

WORKING PRESS. 16 bar

SIZE 300x250-390

TEST PRESS. 24 bar

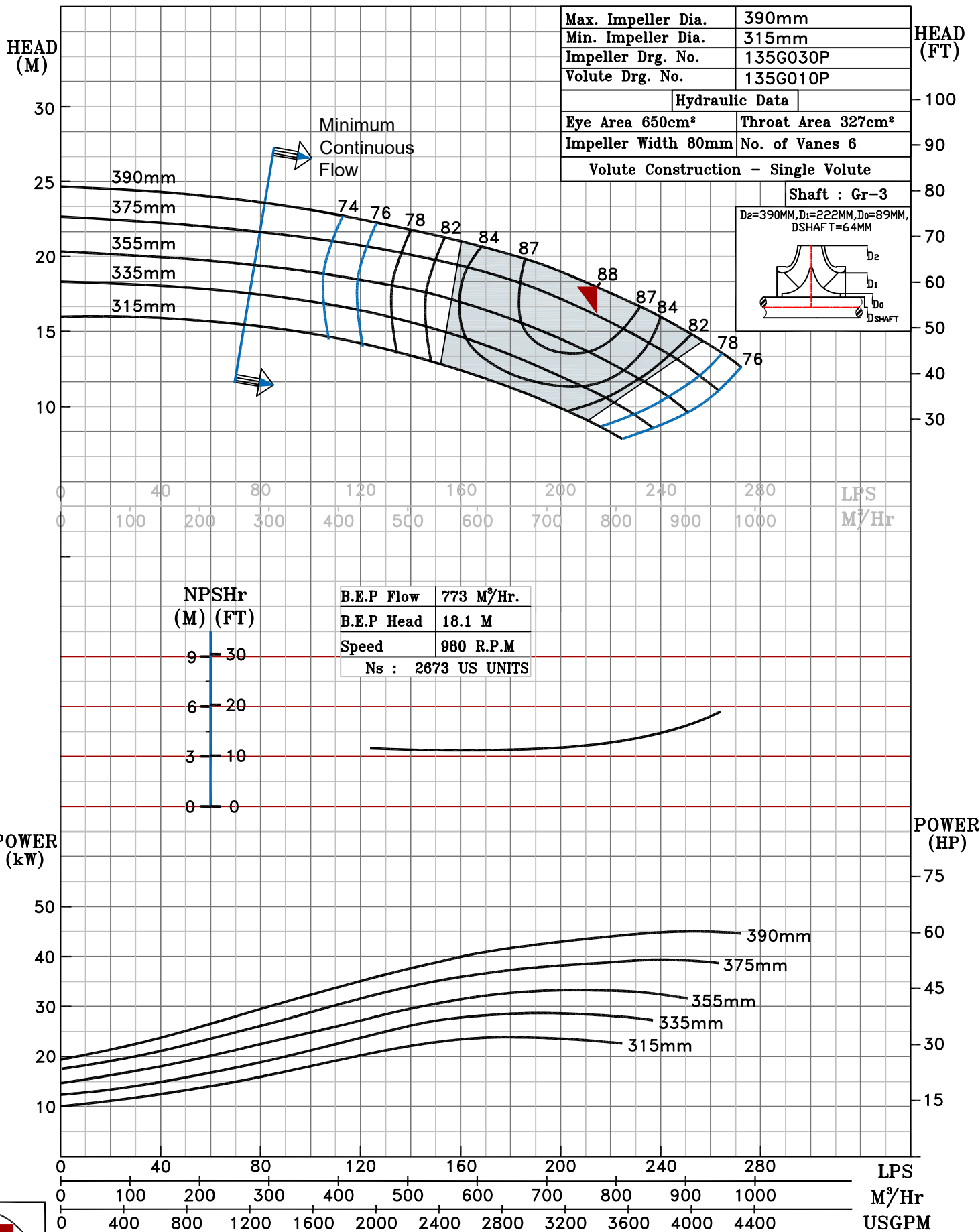
TYPE-AXIALLY SPLIT CASE SINGLE STAGE

SPEED 980 rpm

DATE - 06.10.2022

SHADED REGION ON THE H-Q CURVE REPRESENTS OPTIMUM SELECTION ZONE

PUMP PERFORMANCE CHARACTERISTICS COMPUTED BASED ON CLEAN COLD WATER S.G 1.0



980 RPM