

NOTE- PERFORMANCE AS PER ISO 9906 GRADE-2B

PERFORMANCE CURVE OF 10HS13L @980 R.P.M

10HS13L/Y/103456

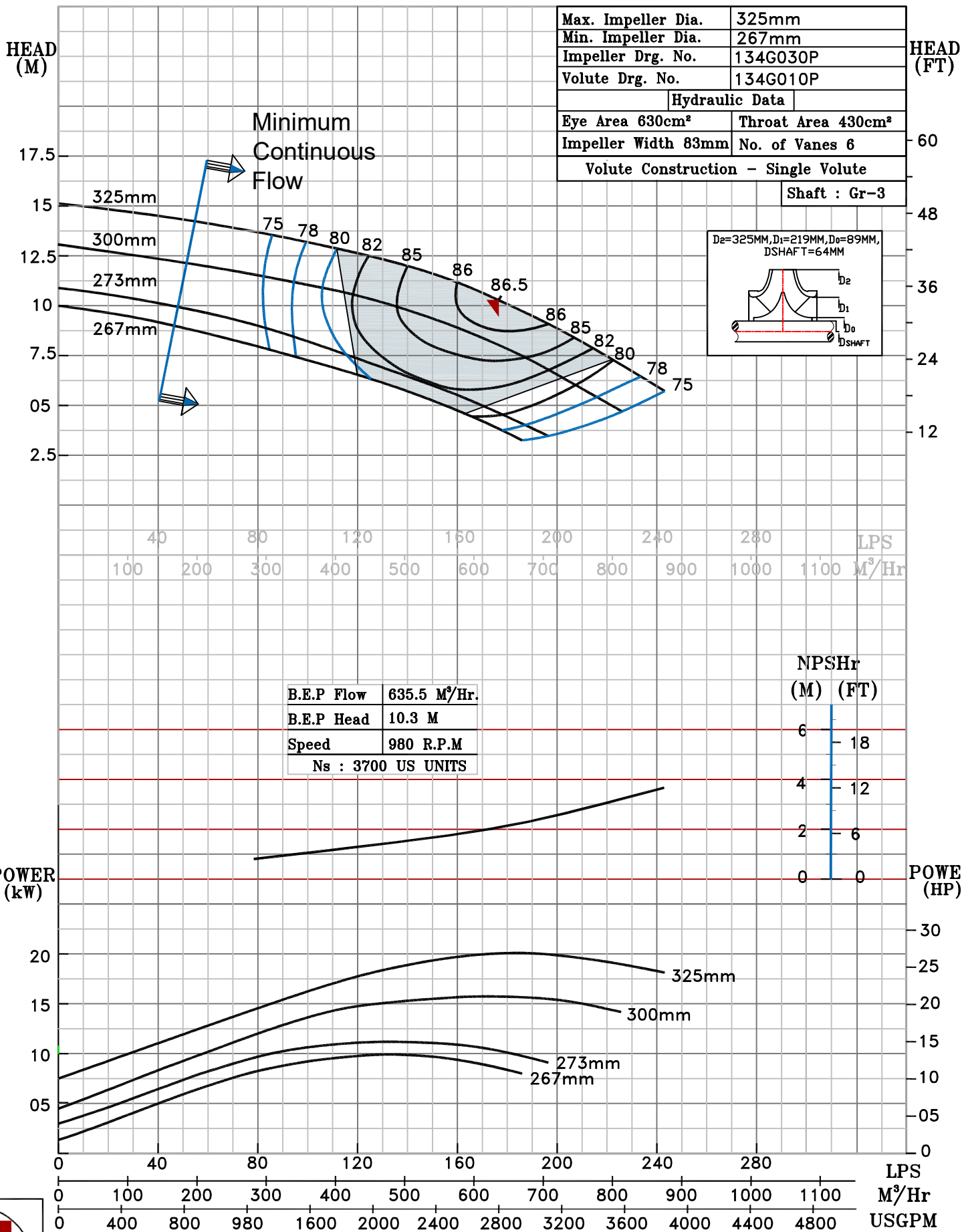


HS RANGE

MODEL	10HS13L	WORKING PRESS.	16 bar
SIZE	300x250-325	TEST PRESS.	24 bar
TYPE-AXIALLY SPLIT CASE SINGLE STAGE		SPEED	980 rpm
		DATE	- 06.10.2022

SHADED REGION ON THE H-Q CURVE REPRESENTS OPTIMUM SELECTION ZONE

PUMP PERFORMANCE CHARACTERISTICS COMPUTED BASED ON CLEAN COLD WATER S.G 1.0



980 RPM