

NOTE- PERFORMANCE AS PER ISO 9906 GRADE-2B

PERFORMANCE CURVE OF 8HS26 @1780 R.P.M

8HS26/X/103164

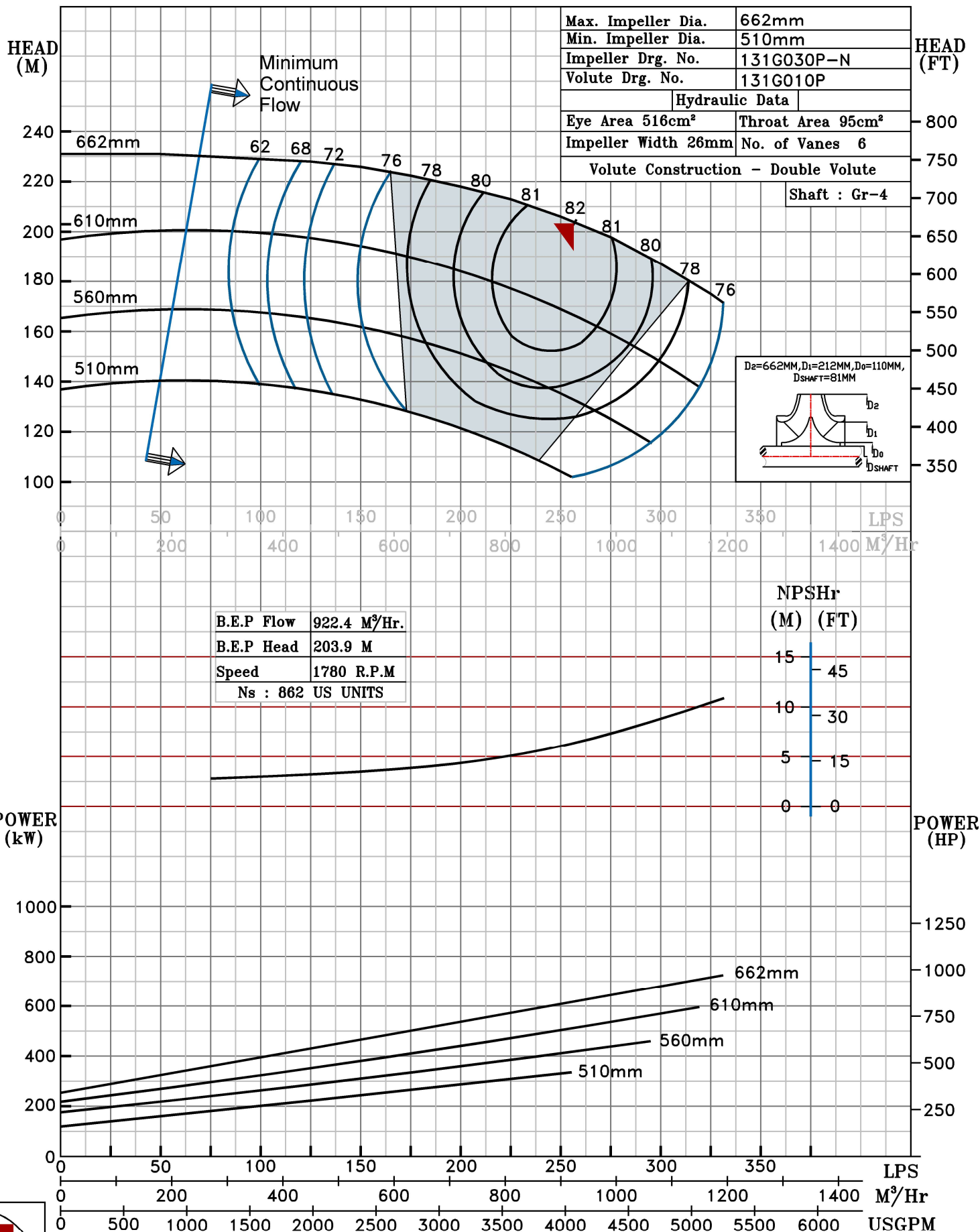


HS RANGE

MODEL	8HS26	WORKING PRESS.	25 bar
SIZE	250x200-662	TEST PRESS.	37.5 bar
TYPE-AXIALLY SPLIT CASE SINGLE STAGE		SPEED 1780 rpm	
		DATE - 06.10.2022	

SHADED REGION ON THE H-Q CURVE REPRESENTS OPTIMUM SELECTION ZONE

PUMP PERFORMANCE CHARACTERISTICS COMPUTED BASED ON CLEAN COLD WATER S.G 1.0



1780 RPM