

NOTE- PERFORMANCE AS PER ISO 9906 GRADE-2B

PERFORMANCE CURVE OF 8HS18TB @1780 R.P.M

8HS18TB/X/102764



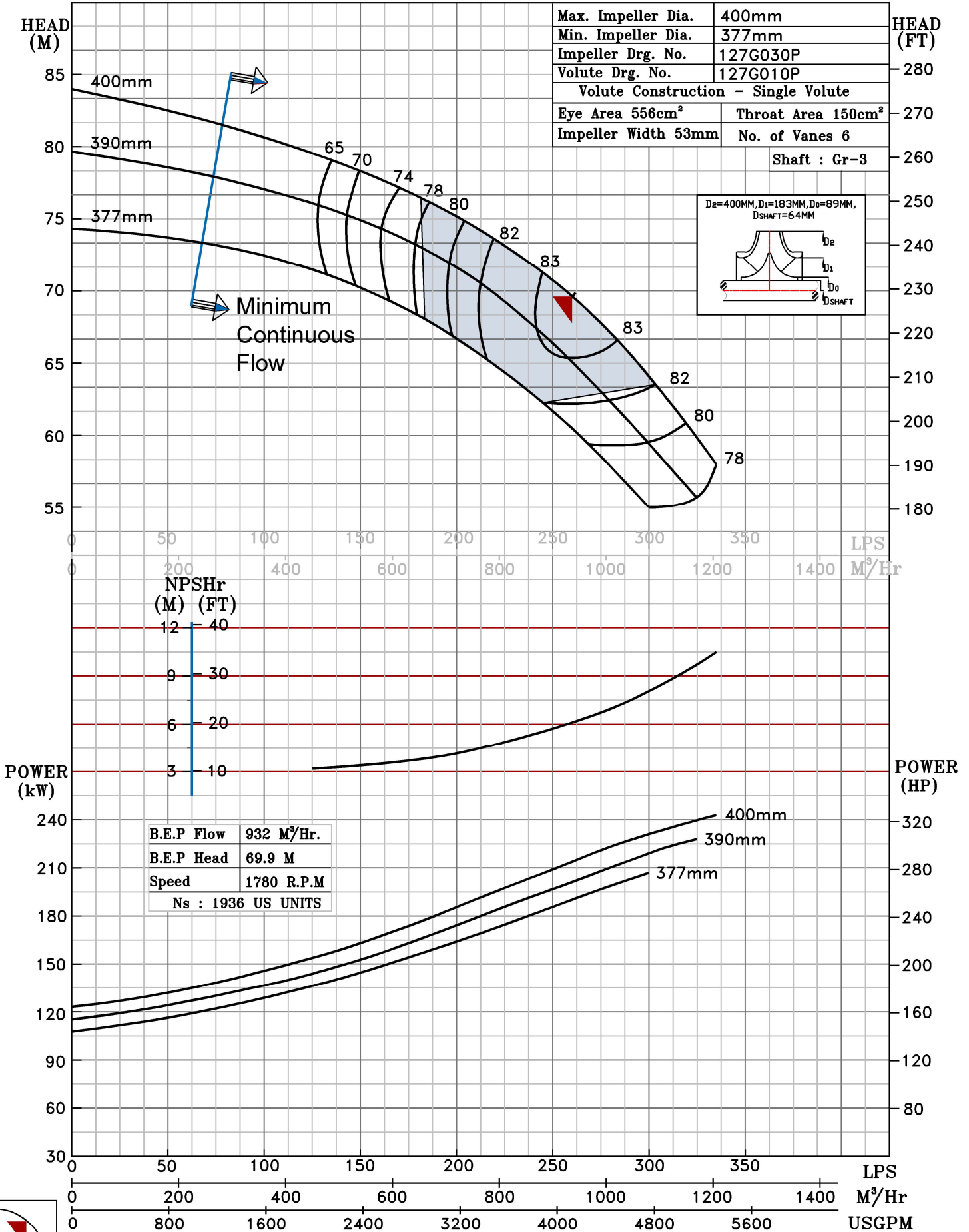
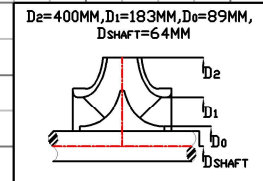
HS RANGE

MODEL 8HS18TB	WORKING PRESS	16 bar
SIZE 250x200-400	TEST PRESS.	24 bar
TYPE-AXIALLY SPLIT CASE SINGLE STAGE		SPEED 1780 rpm
		DATE - 06.10.2022

SHADED REGION ON THE H-Q CURVE REPRESENTS OPTIMUM SELECTION ZONE

PUMP PERFORMANCE CHARACTERISTICS COMPUTED BASED ON CLEAN COLD WATER S.G 1.0

Max. Impeller Dia.	400mm
Min. Impeller Dia.	377mm
Impeller Drg. No.	127G030P
Volute Drg. No.	127G010P
Volute Construction - Single Volute	
Eye Area 556cm ²	Throat Area 150cm ²
Impeller Width 53mm	No. of Vanes 6
Shaft : Gr-3	



B.E.P Flow	932 M ³ /Hr.
B.E.P Head	69.9 M
Speed	1780 R.P.M
Ns	1936 US UNITS



1780 RPM