
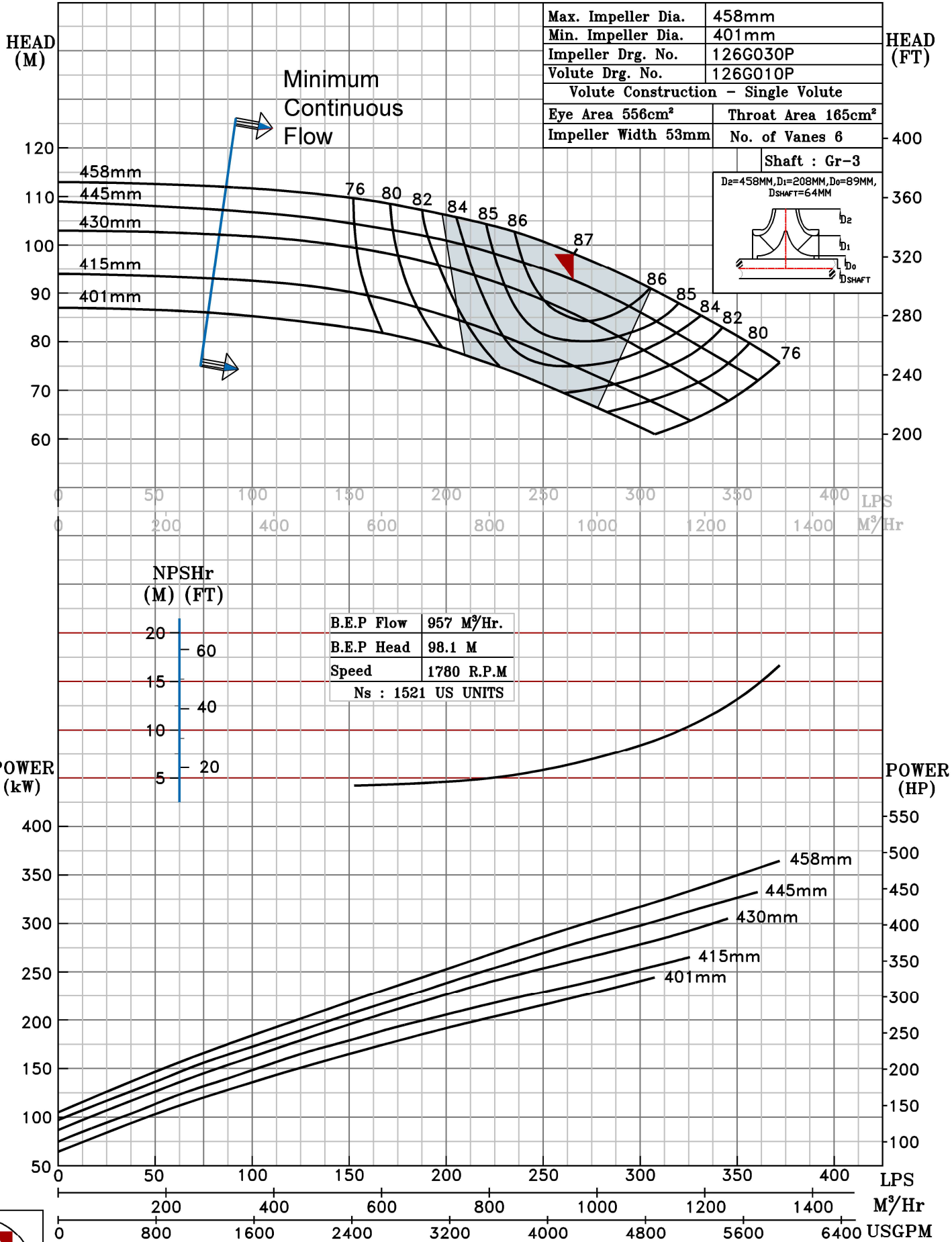
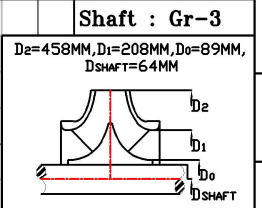


NOTE- PERFORMANCE AS PER ISO 9906 GRADE-2B

PERFORMANCE CURVE OF 8HS18TA @1780 R.P.M		8HS18TA/X/102664	
	MODEL 8HS18TA		WORKING PRESS 16 bar
	SIZE 250x200-458		TEST PRESS. 24 bar
	TYPE-AXIALLY SPLIT CASE SINGLE STAGE		
	SPEED 1780 rpm		
<i>HS RANGE</i>		DATE - 06.10.2022	

SHADED REGION ON THE H-Q CURVE REPRESENTS OPTIMUM SELECTION ZONE
 PUMP PERFORMANCE CHARACTERISTICS COMPUTED BASED ON CLEAN COLD WATER S.G 1.0

Max. Impeller Dia.	458mm
Min. Impeller Dia.	401mm
Impeller Drg. No.	126G030P
Volute Drg. No.	126G010P
Volute Construction - Single Volute	
Eye Area 556cm ²	Throat Area 165cm ²
Impeller Width 53mm	No. of Vanes 6



1780 RPM