

NOTE- PERFORMANCE AS PER ISO 9906 GRADE-2B

PERFORMANCE CURVE OF 8HS12 @1780 R.P.M

8HS12/X/102264

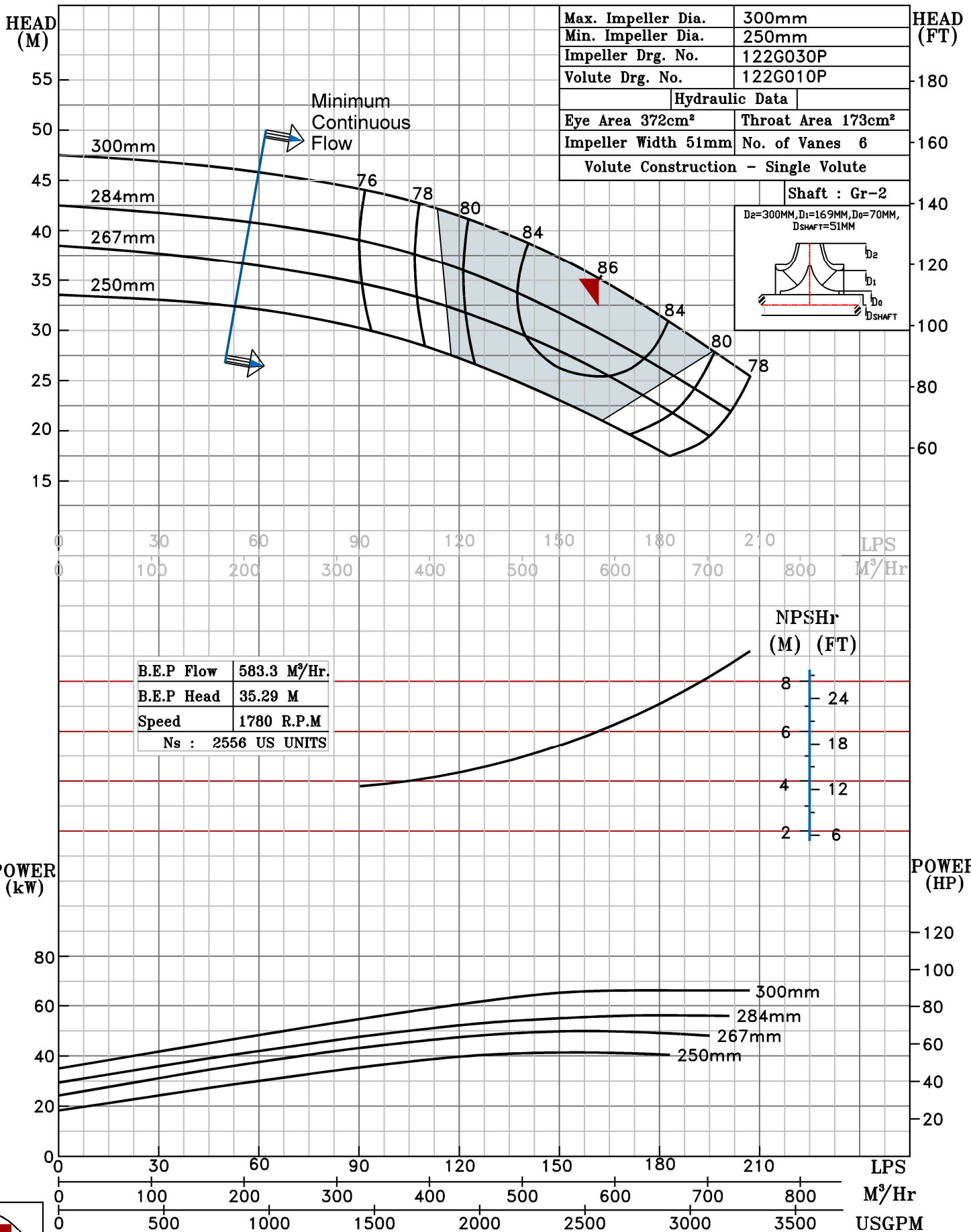


HS RANGE

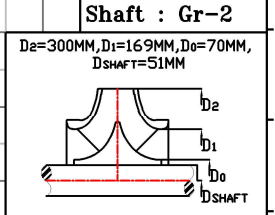
MODEL	8HS12	WORKING PRESS.	16 bar
SIZE	200x200-300	TEST PRESS.	24 bar
TYPE-AXIALLY SPLIT CASE SINGLE STAGE		SPEED	1780 rpm
		DATE	- 06.10.2022

SHADED REGION ON THE H-Q CURVE REPRESENTS OPTIMUM SELECTION ZONE

PUMP PERFORMANCE CHARACTERISTICS COMPUTED BASED ON CLEAN COLD WATER S.G 1.0



Max. Impeller Dia.	300mm
Min. Impeller Dia.	250mm
Impeller Drg. No.	122G030P
Volute Drg. No.	122G010P
Hydraulic Data	
Eye Area 372cm²	Throat Area 173cm²
Impeller Width 51mm	No. of Vanes 6
Volute Construction - Single Volute	



B.E.P Flow	583.3 M³/Hr.
B.E.P Head	35.29 M
Speed	1780 R.P.M
Ns	: 2556 US UNITS



1780 RPM