

NOTE- PERFORMANCE AS PER ISO 9906 GRADE-2B

PERFORMANCE CURVE OF 5HS13 @1780 R.P.M

5HS13/Y/101364

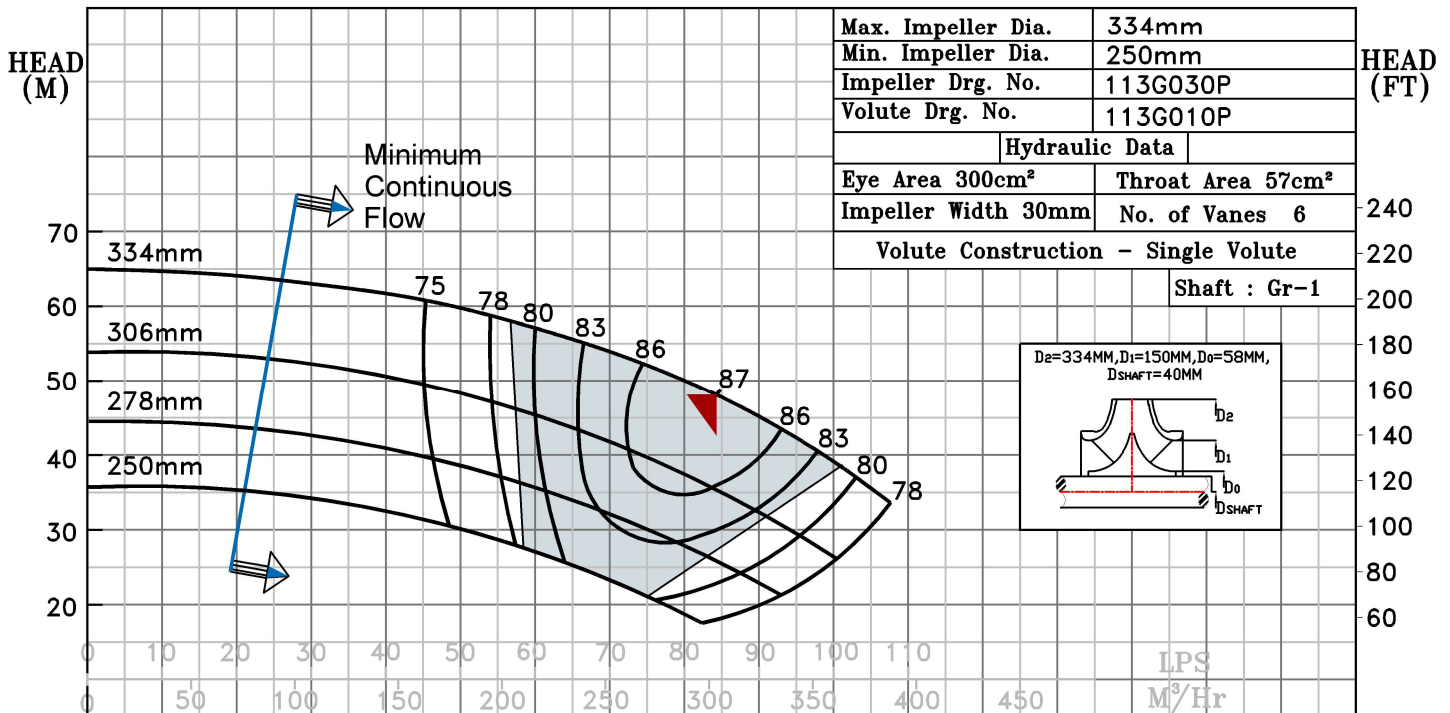


HS RANGE

MODEL	5HS13	WORKING PRESS.	16 bar
SIZE	150x125-334	TEST PRESS.	24 bar
TYPE-AXIALLY SPLIT CASE SINGLE STAGE		SPEED	1780 rpm
		DATE	06.10.2022

SHADED REGION ON THE H-Q CURVE REPRESENTS OPTIMUM SELECTION ZONE

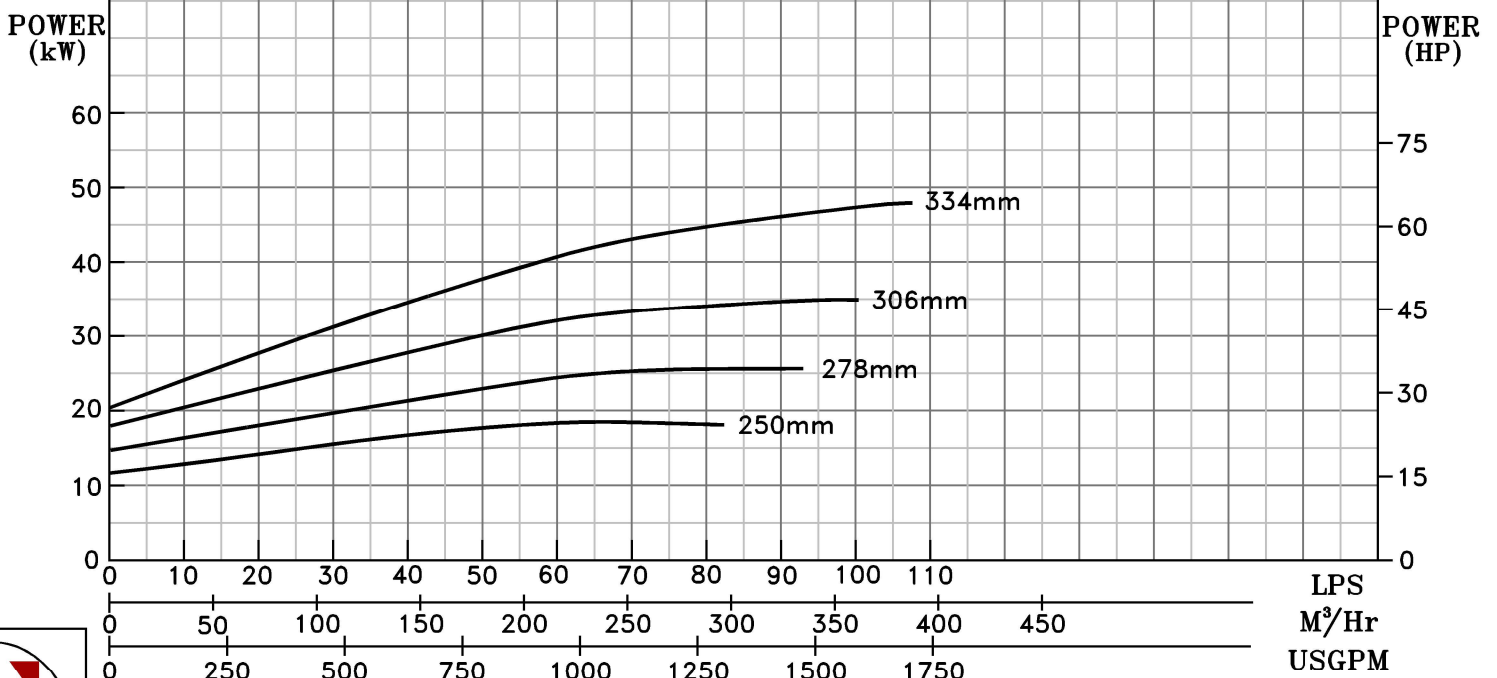
PUMP PERFORMANCE CHARACTERISTICS COMPUTED BASED ON CLEAN COLD WATER S.G 1.0



Max. Impeller Dia.	334mm
Min. Impeller Dia.	250mm
Impeller Drg. No.	113G030P
Volute Drg. No.	113G010P
Hydraulic Data	
Eye Area 300cm ²	Throat Area 57cm ²
Impeller Width 30mm	No. of Vanes 6
Volute Construction - Single Volute	
Shaft : Gr-1	

B.E.P Flow	303.1 M ³ /Hr.
B.E.P Head	47.73 M
Speed	1780 R.P.M
Ns : 1469 US UNITS	

NPSHr	(M)	(FT)
	7	-22
	6	-20
	5	-18
	4	-14



1780 RPM

