
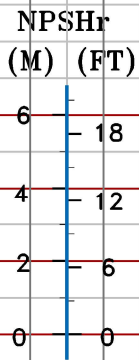
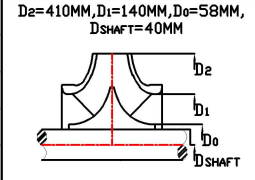
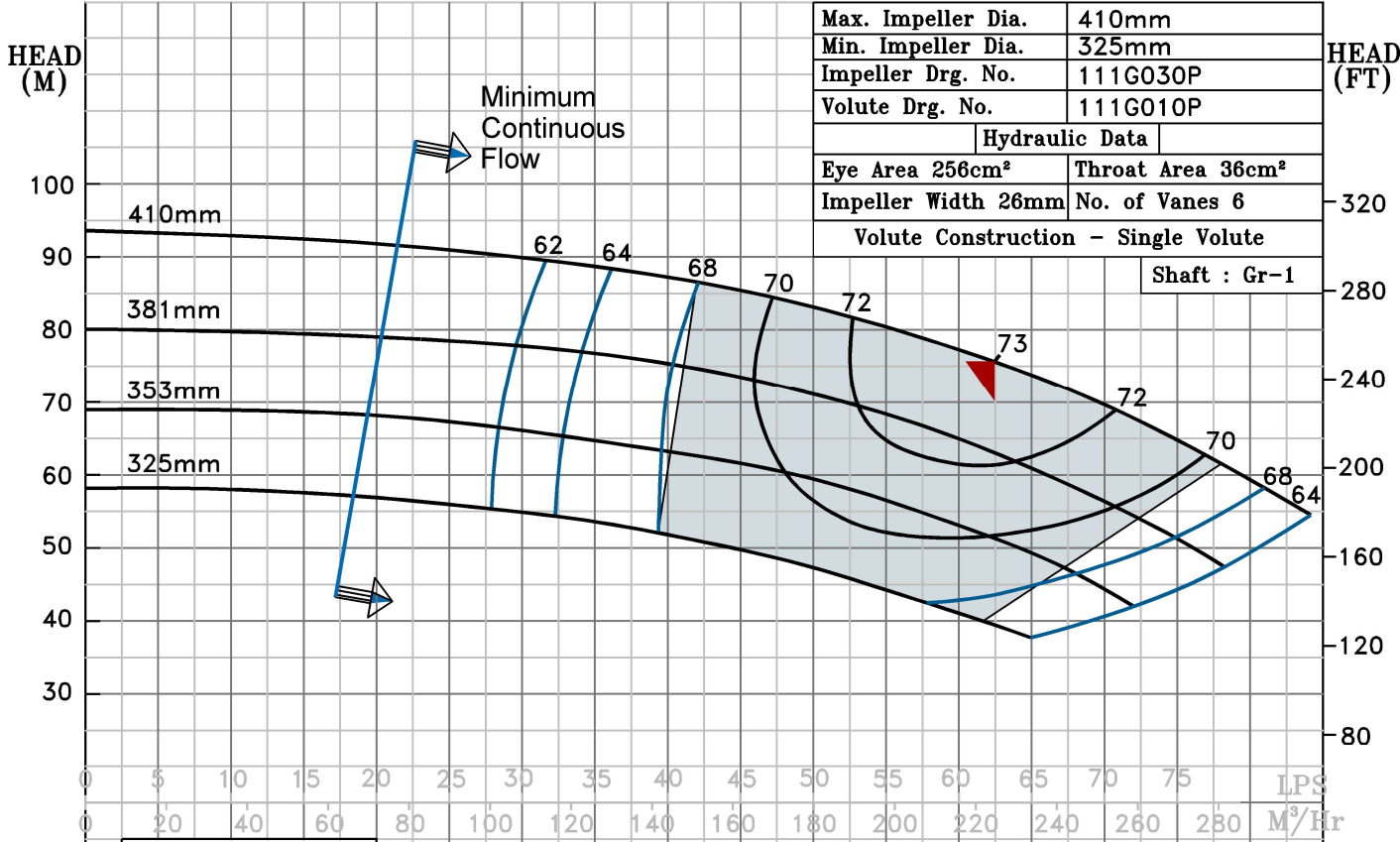


NOTE- PERFORMANCE AS PER ISO 9906 GRADE-2B

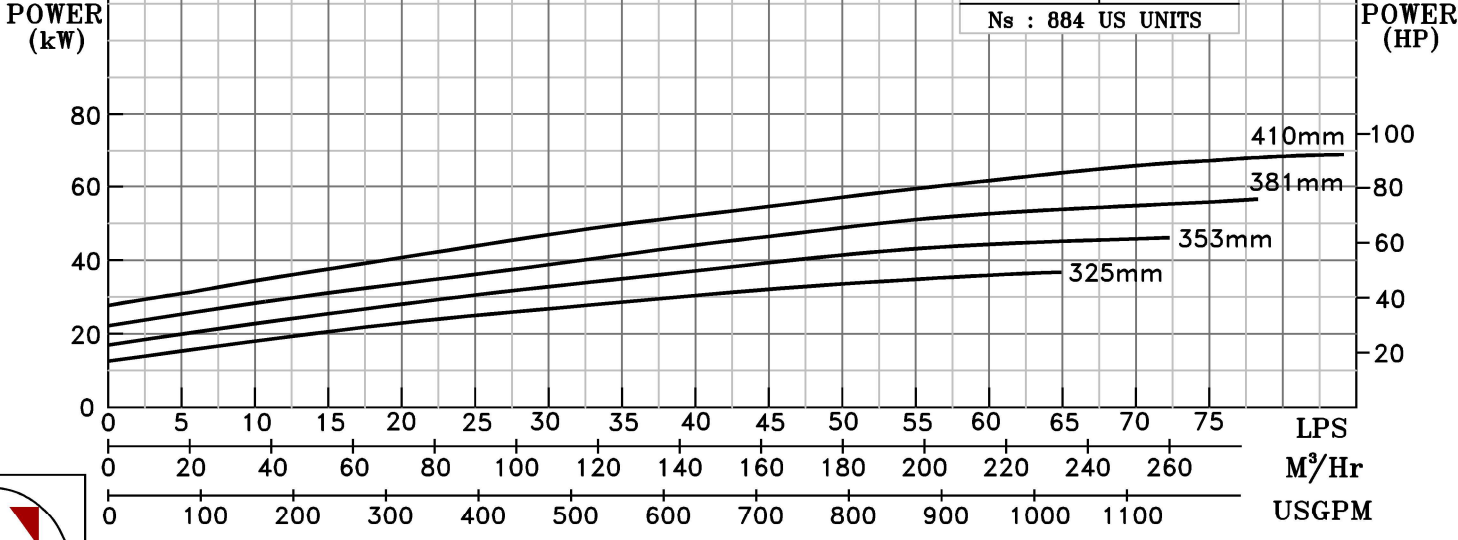
PERFORMANCE CURVE OF 4HS16 @1765 R.P.M		4HS16/X/101164	
	MODEL 4HS16	WORKING PRESS.	16 bar
	SIZE 125x100-410	TEST PRESS.	24 bar
	TYPE-AXIALLY SPLIT CASE SINGLE STAGE		
HS RANGE			SPEED 1765 rpm
			DATE - 06.10.2022

SHADED REGION ON THE H-Q CURVE REPRESENTS OPTIMUM SELECTION ZONE
 PUMP PERFORMANCE CHARACTERISTICS COMPUTED BASED ON CLEAN COLD WATER S.G 1.0

Max. Impeller Dia.	410mm
Min. Impeller Dia.	325mm
Impeller Drg. No.	111G030P
Volute Drg. No.	111G010P
Hydraulic Data	
Eye Area 256cm ²	Throat Area 36cm ²
Impeller Width 26mm	No. of Vanes 6
Volute Construction - Single Volute	
Shaft : Gr-1	



B.E.P Flow	225.3 M ³ /Hr.
B.E.P Head	76.2 M
Speed	1765 R.P.M
Ns	884 US UNITS



1765 RPM