

NOTE- PERFORMANCE AS PER ISO 9906 GRADE-2B

PERFORMANCE CURVE OF 16HS26 @1780 R.P.M

16HS26/Y/105764



HS RANGE

MODEL 16HS26

WORKING PRESS. 25 bar

SIZE 500x400-662

TEST PRESS. 37.5 bar

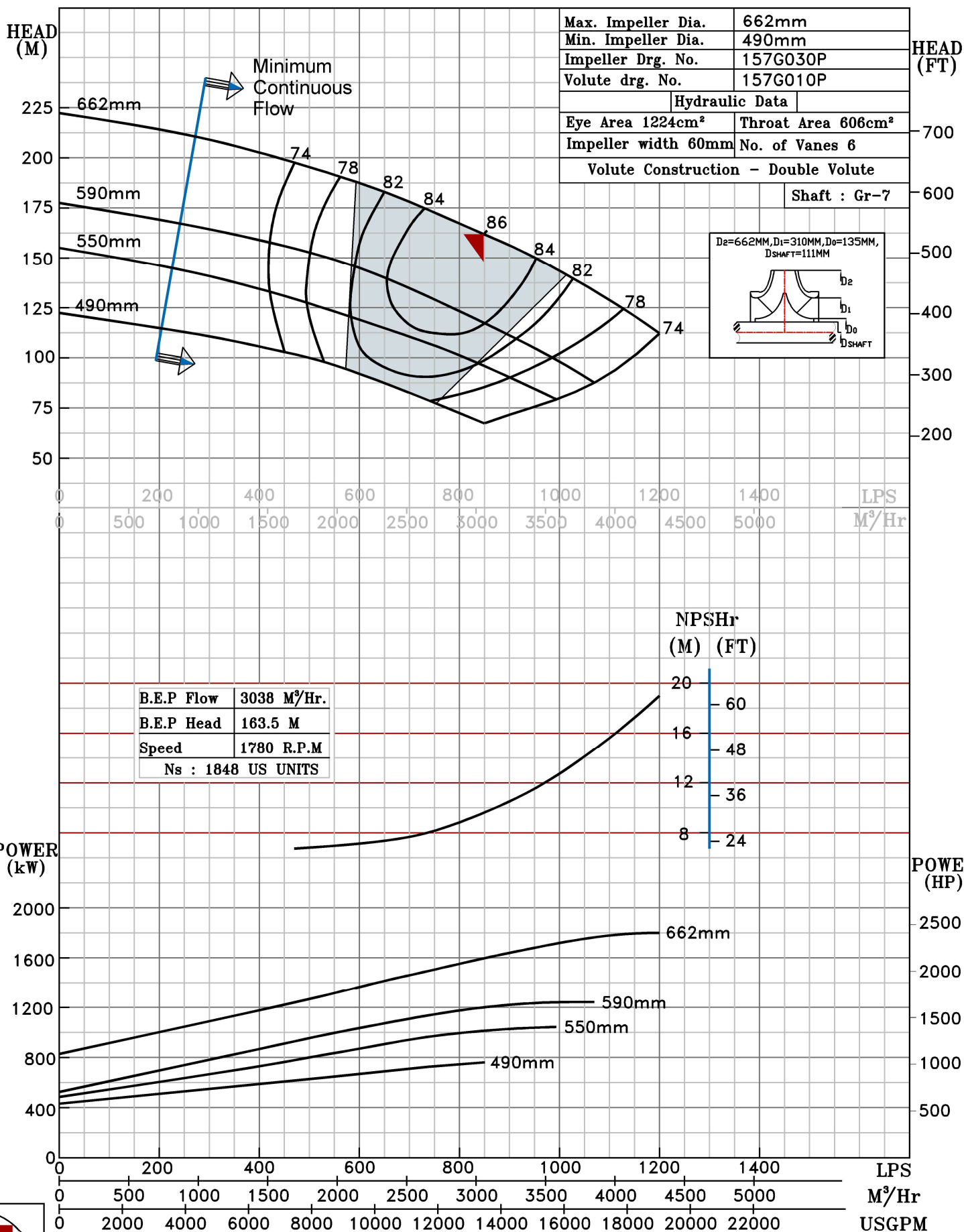
TYPE-AXIALLY SPLIT CASE SINGLE STAGE

SPEED 1780 rpm

DATE - 06.10.2022

SHADED REGION ON THE H-Q CURVE REPRESENTS OPTIMUM SELECTION ZONE

PUMP PERFORMANCE CHARACTERISTICS COMPUTED BASED ON CLEAN COLD WATER S.G 1.0



1780 RPM

