

NOTE- PERFORMANCE AS PER ISO 9906 GRADE-2B

PERFORMANCE CURVE OF 10HS27 @1780 R.P.M

10HS27/X/103864

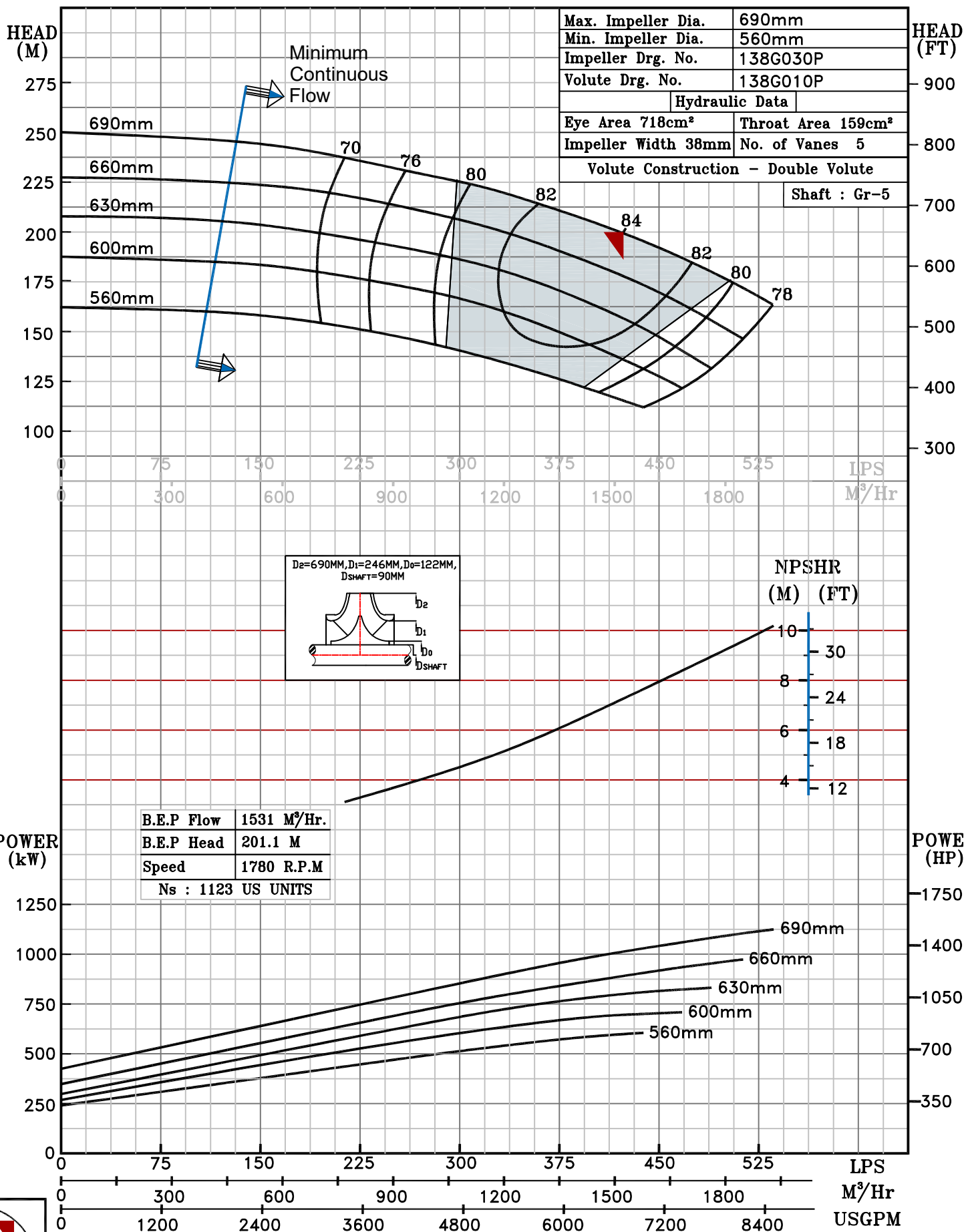


HS RANGE

MODEL	10HS27	WORKING PRESS.	27 bar
SIZE	300x250-690	TEST PRESS.	40.5 bar
TYPE-AXIALLY SPLIT CASE SINGLE STAGE		SPEED 1780 rpm	
		DATE - 06.10.2022	

SHADED REGION ON THE H-Q CURVE REPRESENTS OPTIMUM SELECTION ZONE

PUMP PERFORMANCE CHARACTERISTICS COMPUTED BASED ON CLEAN COLD WATER S.G 1.0



1780 RPM

