

NOTE- PERFORMANCE AS PER ISO 9906 GRADE-2B

PERFORMANCE CURVE OF 10HS13 @1780 R.P.M

10HS13/X/103364

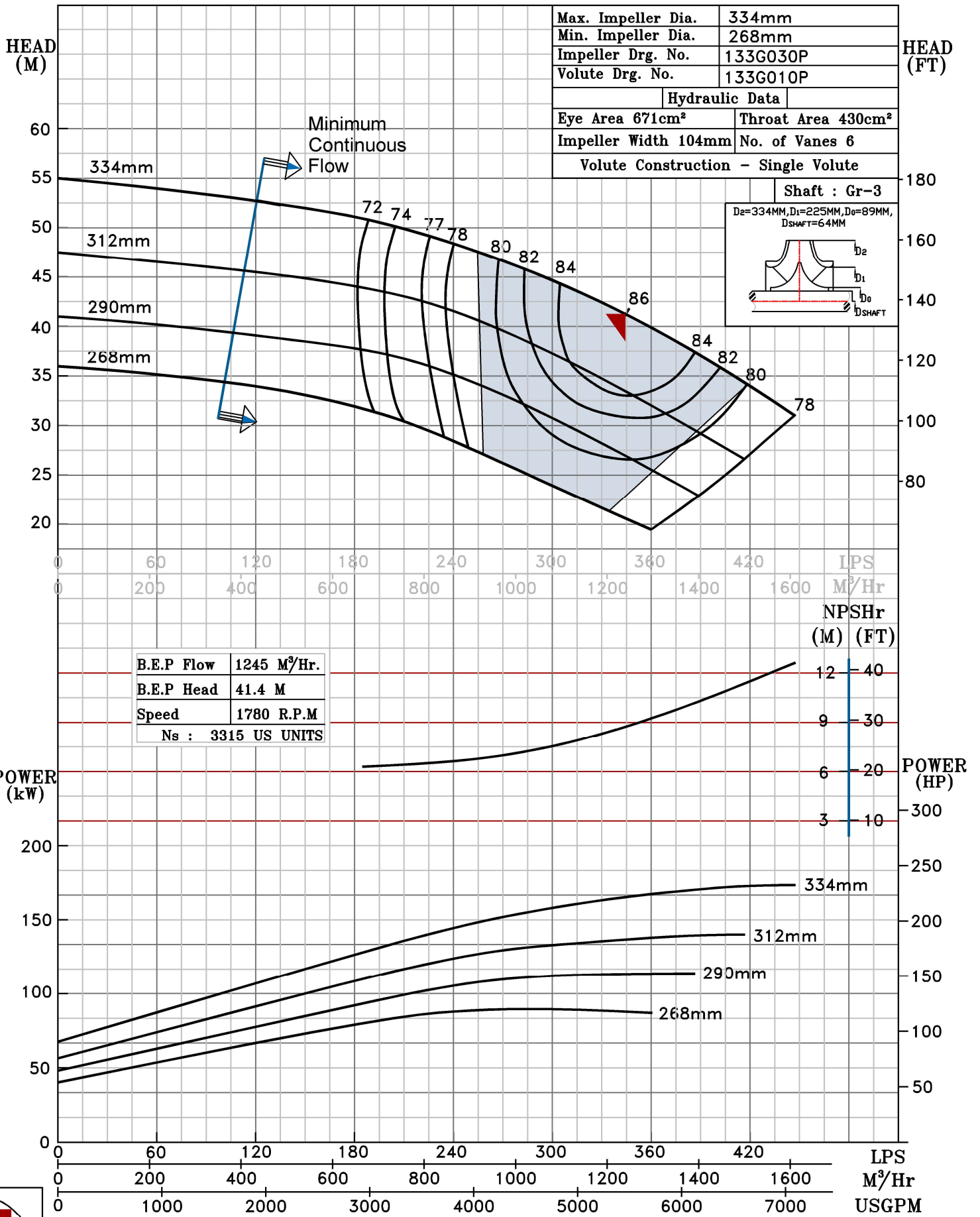


HS RANGE

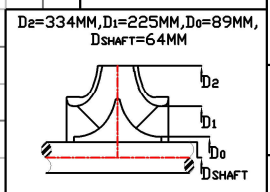
MODEL	10HS13	WORKING PRESS.	16 bar
SIZE	300x250-334	TEST PRESS.	24 bar
TYPE-AXIALLY SPLIT CASE SINGLE STAGE		SPEED 1780 rpm	
		DATE - 06.10.2022	

SHADED REGION ON THE H-Q CURVE REPRESENTS OPTIMUM SELECTION ZONE

PUMP PERFORMANCE CHARACTERISTICS COMPUTED BASED ON CLEAN COLD WATER S.G 1.0



B.E.P Flow	1245 M <sup>3</sup> /Hr.
B.E.P Head	41.4 M
Speed	1780 R.P.M
N <sub>s</sub> :	3315 US UNITS



1780 RPM