

NOTE- PERFORMANCE AS PER ISO 9906 GRADE-2B

PERFORMANCE CURVE OF 6HS23 @1480 R.P.M

6HS23/Y/102154

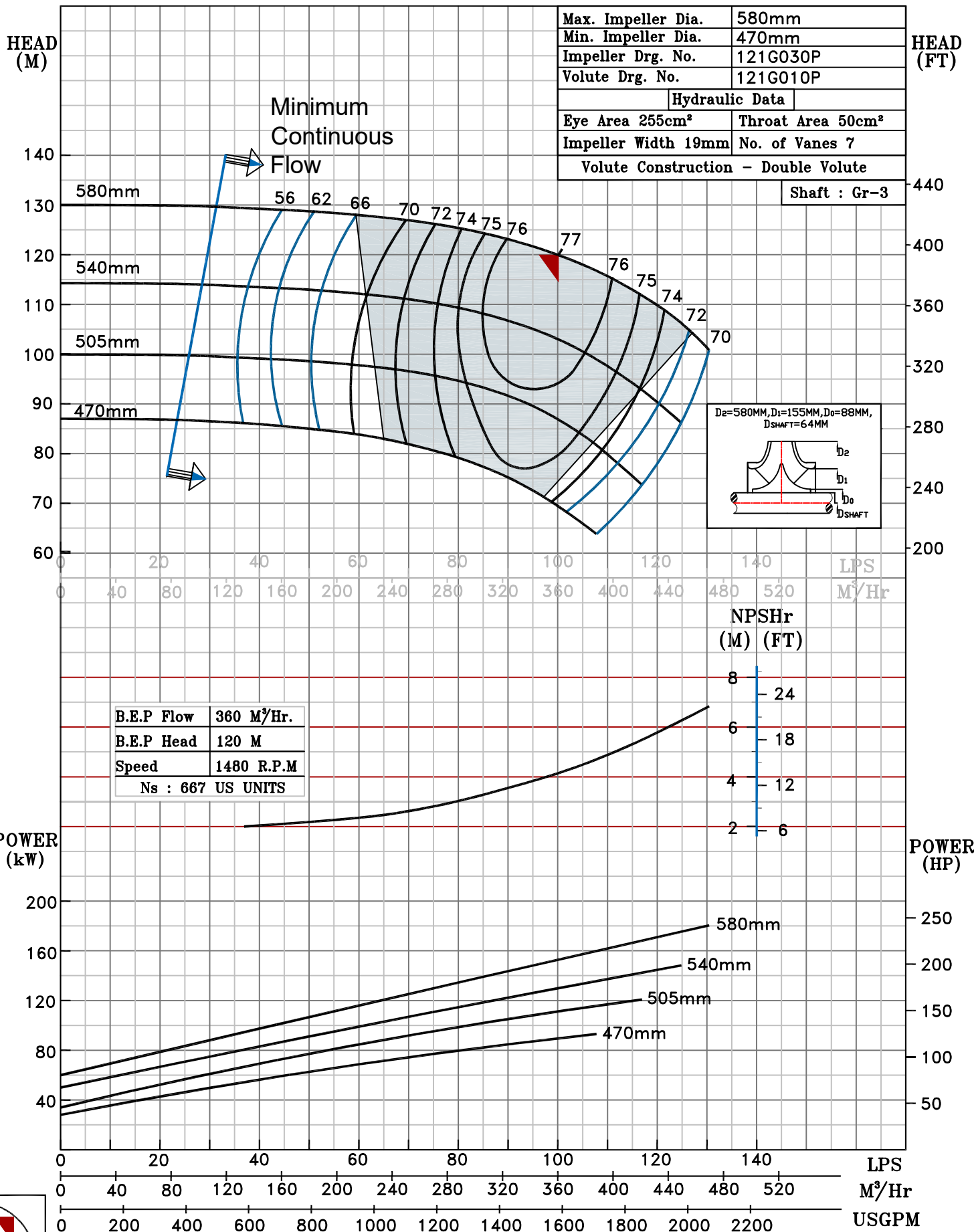


HS RANGE

MODEL 6HS23	WORKING PRESS	20 bar
SIZE 200x150-580	TEST PRESS.	30 bar
TYPE-AXIALLY SPLIT CASE SINGLE STAGE		SPEED 1480 rpm
		DATE - 06.10.2022

SHADED REGION ON THE H-Q CURVE REPRESENTS OPTIMUM SELECTION ZONE

PUMP PERFORMANCE CHARACTERISTICS COMPUTED BASED ON CLEAN COLD WATER S.G 1.0



1480 RPM