

NOTE- PERFORMANCE AS PER ISO 9906 GRADE-2B

PERFORMANCE CURVE OF 6HS21 @1480 R.P.M

6HS21/Y/102054



HS RANGE

MODEL	6HS21	WORKING PRESS.	20 bar
SIZE	200x150-530	TEST PRESS.	30 bar
TYPE-AXIALLY SPLIT CASE SINGLE STAGE		SPEED 1480 rpm	

DATE - 06.10.2022

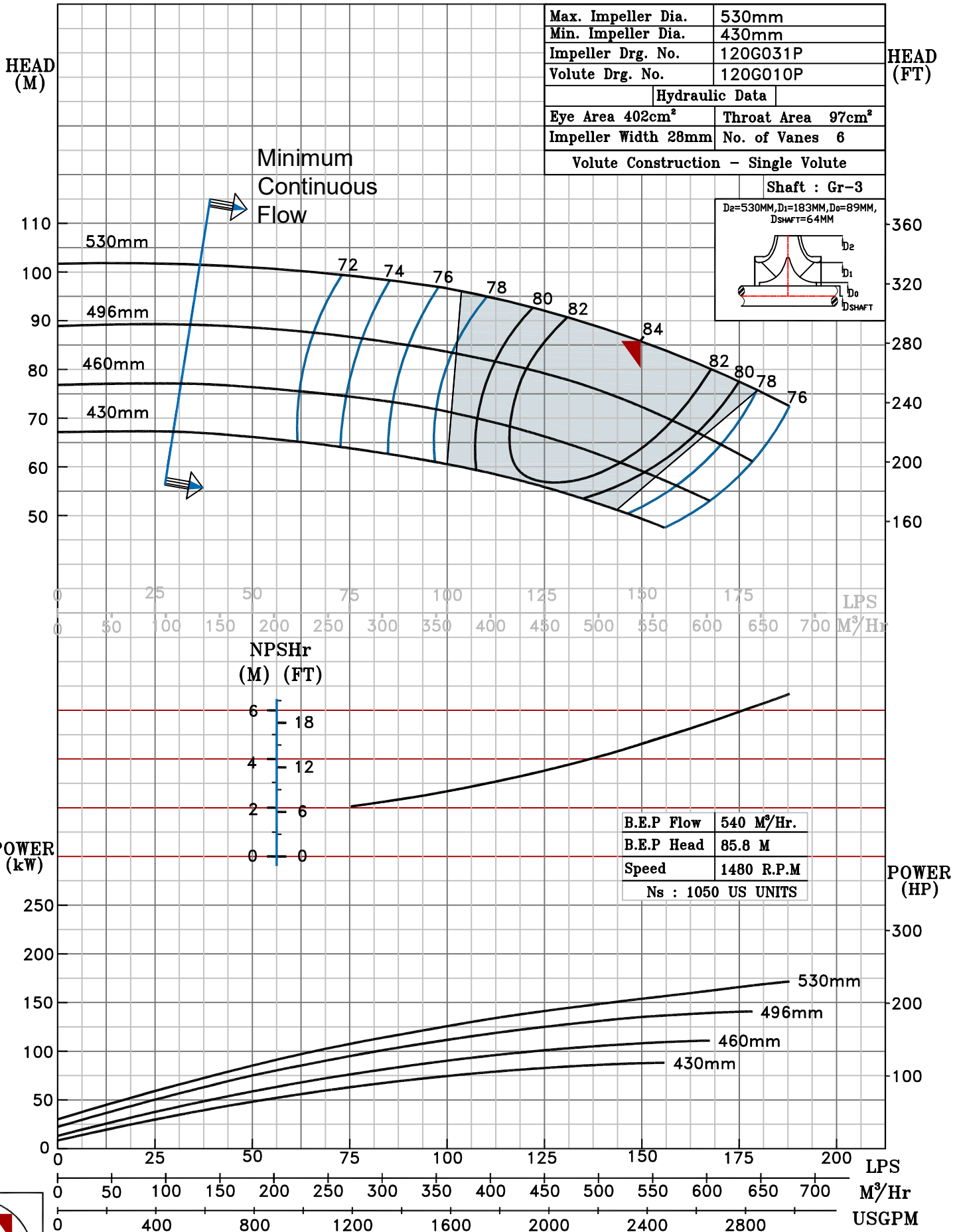
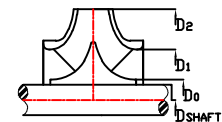
SHADED REGION ON THE H-Q CURVE REPRESENTS OPTIMUM SELECTION ZONE

PUMP PERFORMANCE CHARACTERISTICS COMPUTED BASED ON CLEAN COLD WATER S.G 1.0

Max. Impeller Dia.	530mm
Min. Impeller Dia.	430mm
Impeller Drg. No.	120G031P
Volute Drg. No.	120G010P
Hydraulic Data	
Eye Area 402cm ²	Throat Area 97cm ²
Impeller Width 28mm	No. of Vanes 6
Volute Construction - Single Volute	

Shaft : Gr-3

D_e=530MM, D_i=183MM, D_o=89MM, D_{SHAFT}=64MM



1480 RPM