

NOTE- PERFORMANCE AS PER ISO 9906 GRADE-2B

PERFORMANCE CURVE OF 6HS10 @1480 R.P.M

6HS10/Y/117954

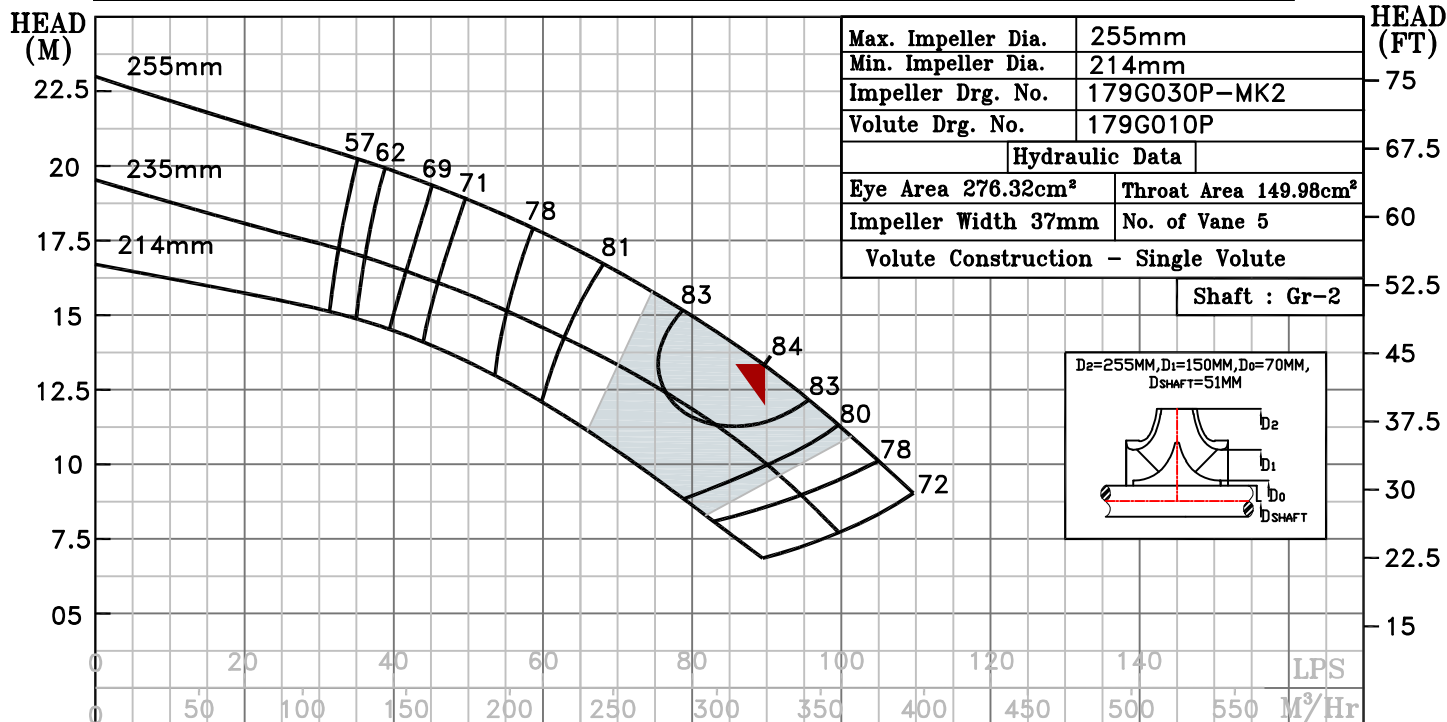


HS RANGE

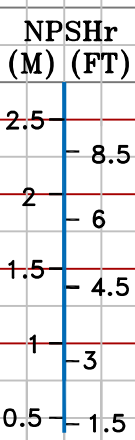
MODEL 6HS10	WORKING PRESS. 20 bar
SIZE 150x150-255	TEST PRESS. 30 bar
TYPE-AXIALLY SPLIT CASE SINGLE STAGE	
SPEED 1480 rpm	
DATE - 06.10.2022	

SHADED REGION ON THE H-Q CURVE REPRESENTS OPTIMUM SELECTION ZONE

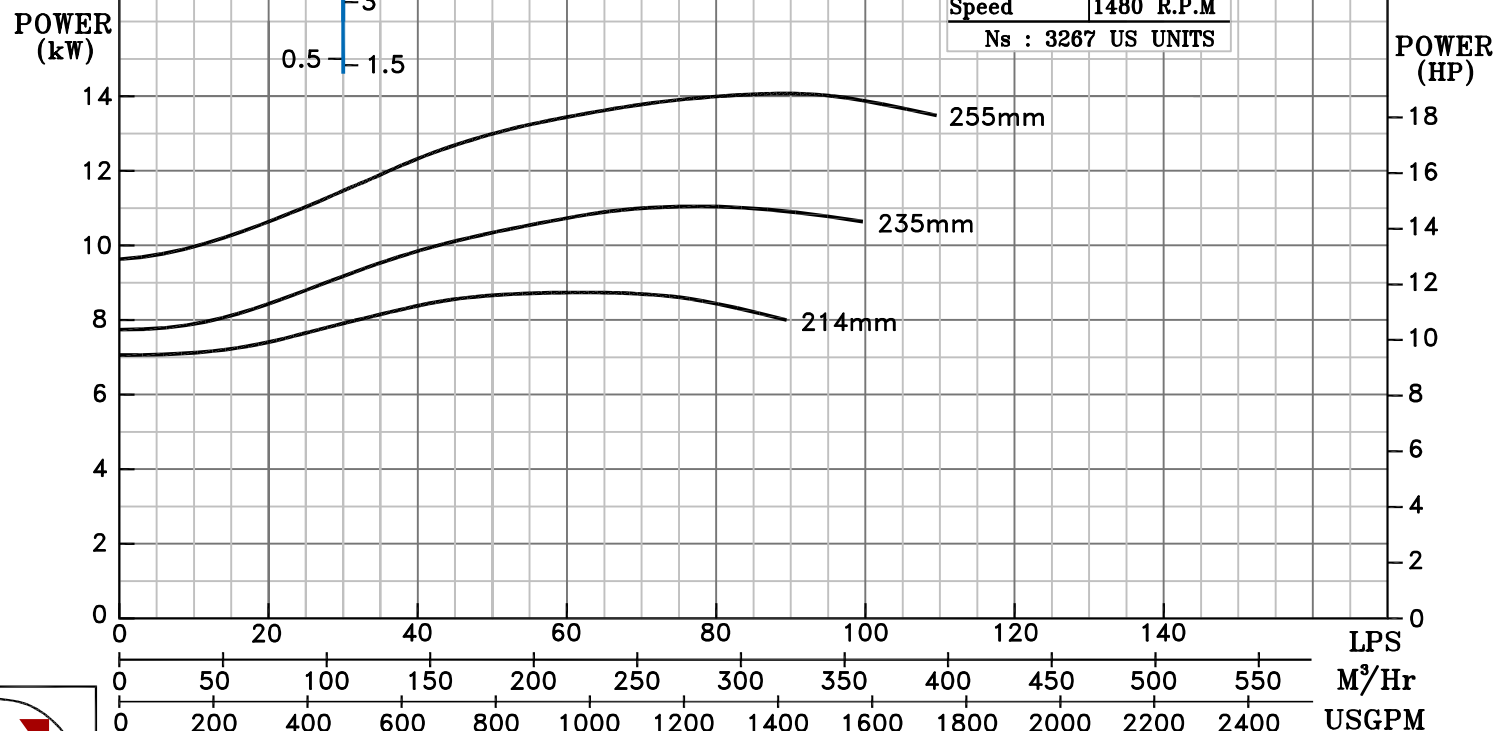
PUMP PERFORMANCE CHARACTERISTICS COMPUTED BASED ON CLEAN COLD WATER S.G 1.0



Max. Impeller Dia.	255mm
Min. Impeller Dia.	214mm
Impeller Drg. No.	179G030P-MK2
Volute Drg. No.	179G010P
Shaft : Gr-2	
Hydraulic Data	
Eye Area 276.32cm ²	Throat Area 149.98cm ²
Impeller Width 37mm	No. of Vane 5
Volute Construction - Single Volute	



B.E.P Flow	323.8 M ³ /Hr.
B.E.P Head	13.37 M
Speed	1480 R.P.M
Ns : 3267 US UNITS	



1480 RPM