


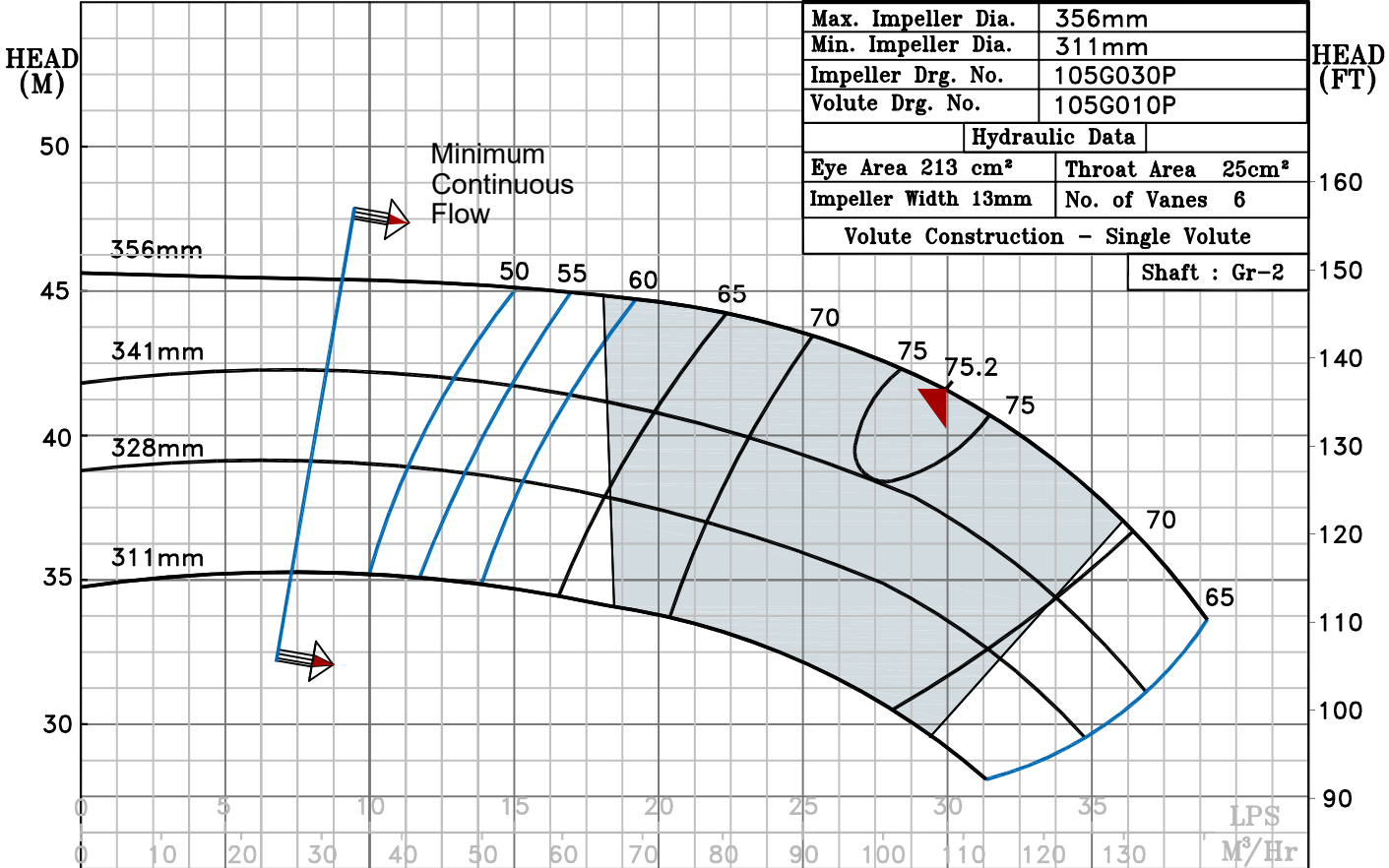
NOTE- PERFORMANCE AS PER ISO 9906 GRADE-2B

PERFORMANCE CURVE OF 3HS14 @1460 R.P.M		3HS14/X/100554	
	MODEL 3HS14	WORKING PRESS.	16 bar
	SIZE 100x80-356	TEST PRESS.	24 bar
HS RANGE		TYPE-AXIALLY SPLIT CASE SINGLE STAGE	
		SPEED 1460 rpm	
		DATE - 06.10.2022	

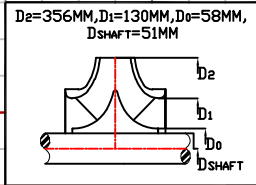
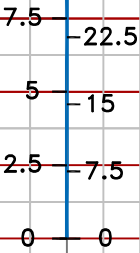
SHADED REGION ON THE H-Q CURVE REPRESENTS OPTIMUM SELECTION ZONE

PUMP PERFORMANCE CHARACTERISTICS COMPUTED BASED ON CLEAN COLD WATER S.G 1.0

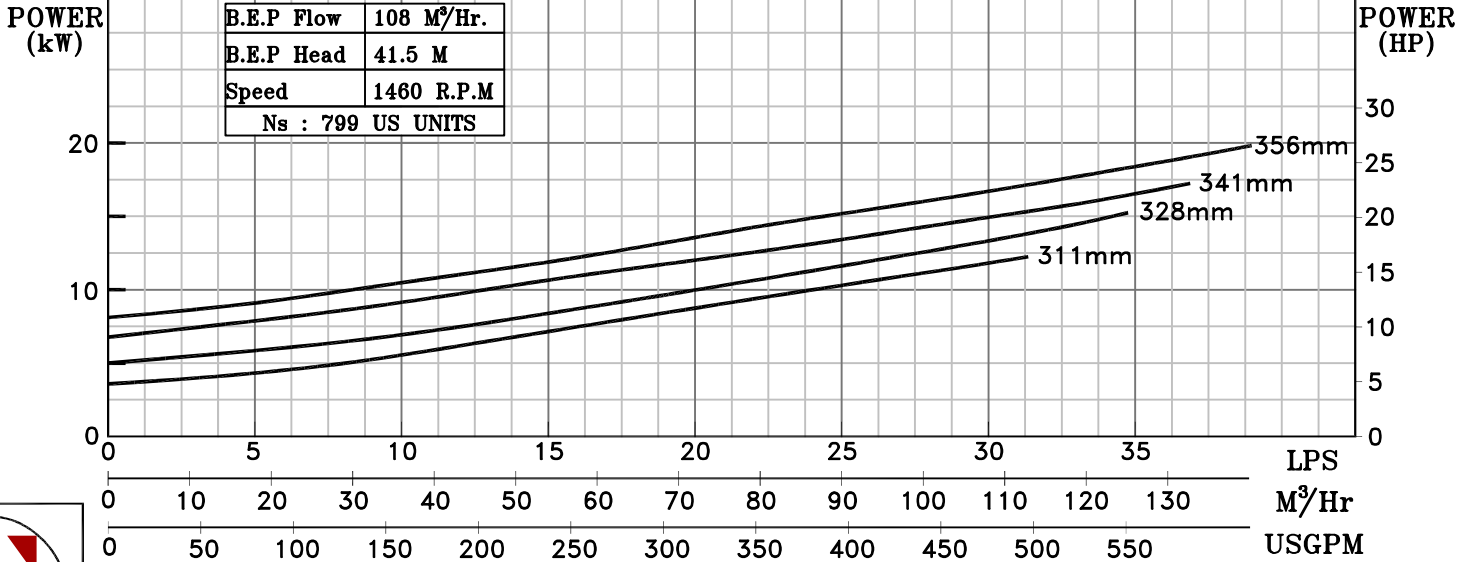
Max. Impeller Dia.	356mm
Min. Impeller Dia.	311mm
Impeller Drg. No.	105G030P
Volute Drg. No.	105G010P
Hydraulic Data	
Eye Area 213 cm ²	Throat Area 25cm ²
Impeller Width 13mm	No. of Vanes 6
Volute Construction - Single Volute	
Shaft : Gr-2	



NPSHR
(m) (ft)



B.E.P Flow	108 M ³ /Hr.
B.E.P Head	41.5 M
Speed	1460 R.P.M
Ns : 799 US UNITS	



1460 RPM