

NOTE- PERFORMANCE AS PER ISO 9906 GRADE-2B

PERFORMANCE CURVE OF 14HS26 @1480 R.P.M

14HS26/X/105154



HS RANGE

MODEL 14HS26	WORKING PRESS	16 bar
SIZE 400x350-642	TEST PRESS.	24 bar
TYPE-AXIALLY SPLIT CASE SINGLE STAGE		SPEED 1480 rpm
		DATE - 06.10.2022

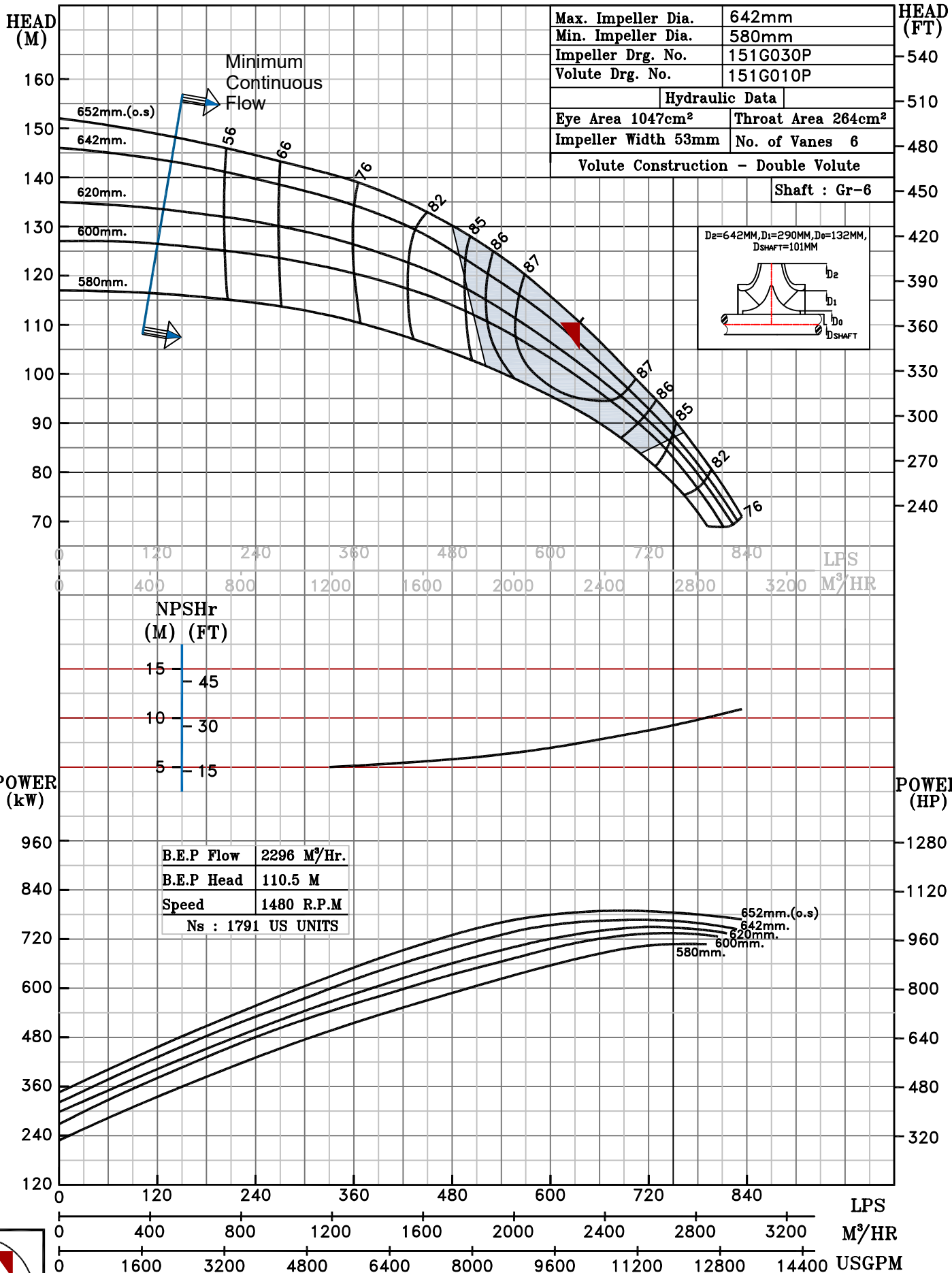
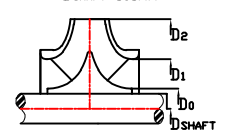
SHADED REGION ON THE H-Q CURVE REPRESENTS OPTIMUM SELECTION ZONE

PUMP PERFORMANCE CHARACTERISTICS COMPUTED BASED ON CLEAN COLD WATER S.G 1.0

Max. Impeller Dia.	642mm
Min. Impeller Dia.	580mm
Impeller Drg. No.	151G030P
Volute Drg. No.	151G010P
Hydraulic Data	
Eye Area 1047cm ²	Throat Area 264cm ²
Impeller Width 53mm	No. of Vanes 6
Volute Construction - Double Volute	

Shaft : Gr-6

De=642MM, Di=290MM, Do=132MM, DSHAFT=101MM



1480 RPM