

NOTE- PERFORMANCE AS PER ISO 9906 GRADE-2B

PERFORMANCE CURVE OF 12HS23 @1480 R.P.M

12HS23/Y/104454

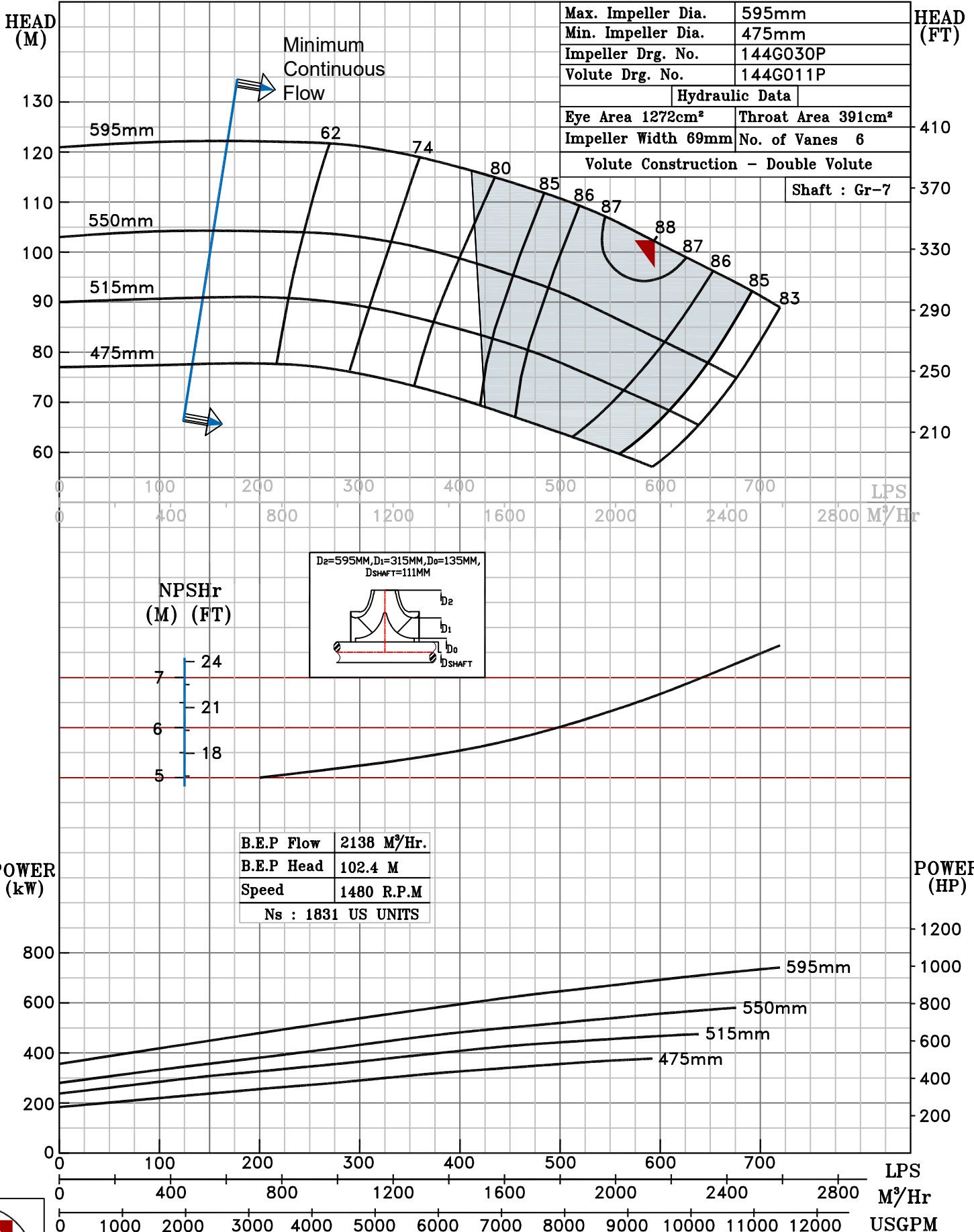


HS RANGE

MODEL	12HS23	WORKING PRESS.	16 bar
SIZE	350x300-595	TEST PRESS.	24 bar
TYPE-AXIALLY SPLIT CASE SINGLE STAGE		SPEED 1480 rpm	
		DATE - 06.10.2022	

SHADED REGION ON THE H-Q CURVE REPRESENTS OPTIMUM SELECTION ZONE

PUMP PERFORMANCE CHARACTERISTICS COMPUTED BASED ON CLEAN COLD WATER S.G 1.0



Max. Impeller Dia.	595mm
Min. Impeller Dia.	475mm
Impeller Drg. No.	144G030P
Volute Drg. No.	144G011P

Hydraulic Data	
Eye Area 1272cm ²	Throat Area 391cm ²
Impeller Width 69mm	No. of Vanes 6

Volute Construction - Double Volute
Shaft : Gr-7

B.E.P Flow	2138 M ³ /Hr.
B.E.P Head	102.4 M
Speed	1480 R.P.M
Ns : 1831 US UNITS	

1480 RPM

