

NOTE- PERFORMANCE AS PER ISO 9906 GRADE-2B

PERFORMANCE CURVE OF 10HS27 @1480 R.P.M

10HS27/X/103854

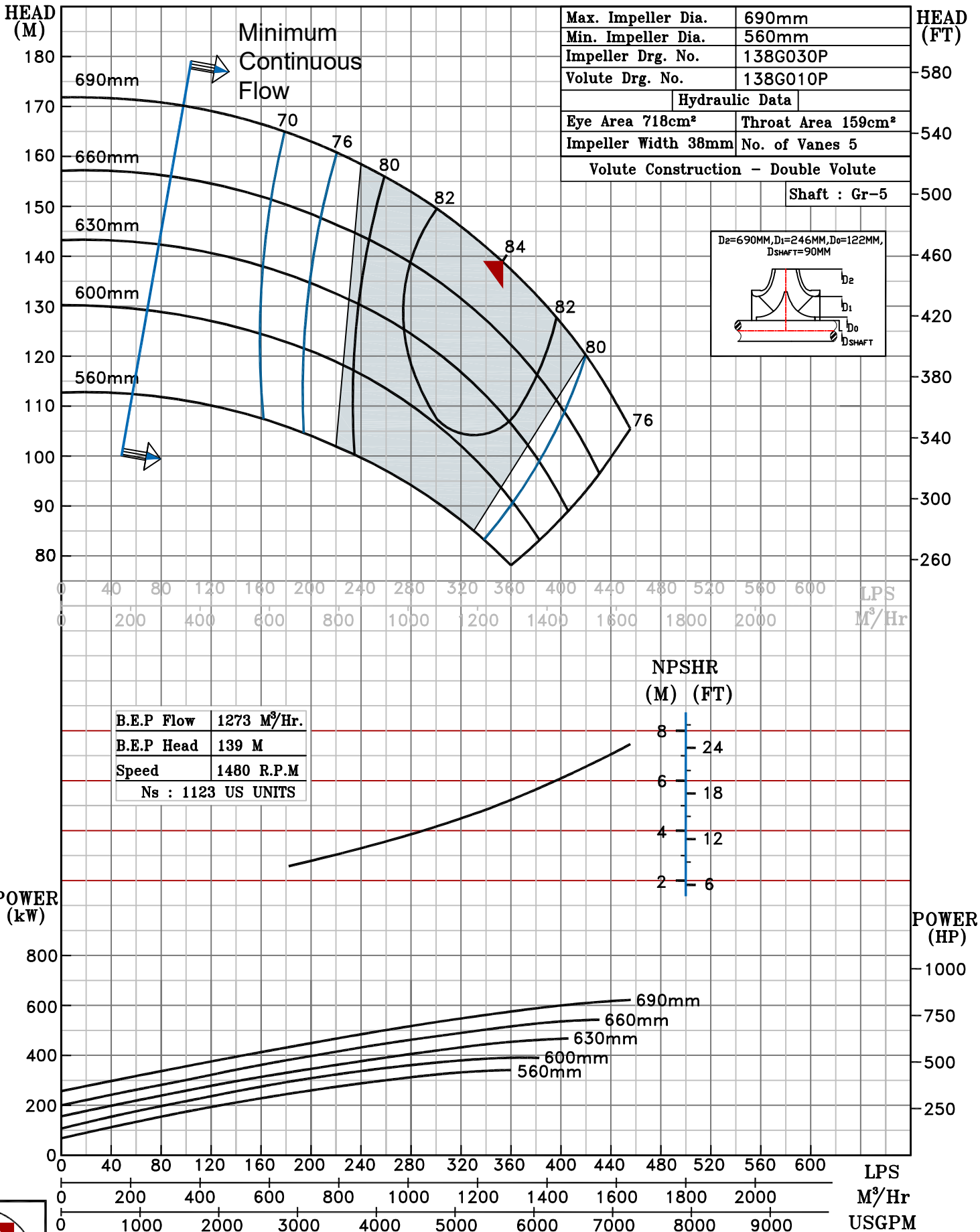


HS RANGE

MODEL	10HS27	WORKING PRESS.	20 bar
SIZE	300x250-690	TEST PRESS.	30 bar
TYPE-AXIALLY SPLIT CASE SINGLE STAGE		SPEED	1480 rpm
		DATE	- 06.10.2022

SHADED REGION ON THE H-Q CURVE REPRESENTS OPTIMUM SELECTION ZONE

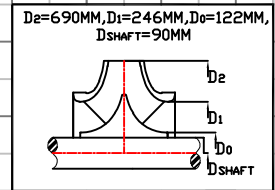
PUMP PERFORMANCE CHARACTERISTICS COMPUTED BASED ON CLEAN COLD WATER S.G 1.0



Max. Impeller Dia.	690mm
Min. Impeller Dia.	560mm
Impeller Drg. No.	138G030P
Volute Drg. No.	138G010P

Hydraulic Data	
Eye Area 718cm ²	Throat Area 159cm ²
Impeller Width 38mm	No. of Vanes 5
Volute Construction - Double Volute	

Shaft : Gr-5



B.E.P Flow	1273 M ³ /Hr.
B.E.P Head	139 M
Speed	1480 R.P.M
Ns : 1123 US UNITS	

NPSHR
(M) (FT)

8	24
6	18
4	12
2	6



1480 RPM