

NOTE- PERFORMANCE AS PER ISO 9906 GRADE-2B

PERFORMANCE CURVE OF 10HS22 @1480 R.P.M

10HS22/Y/103754

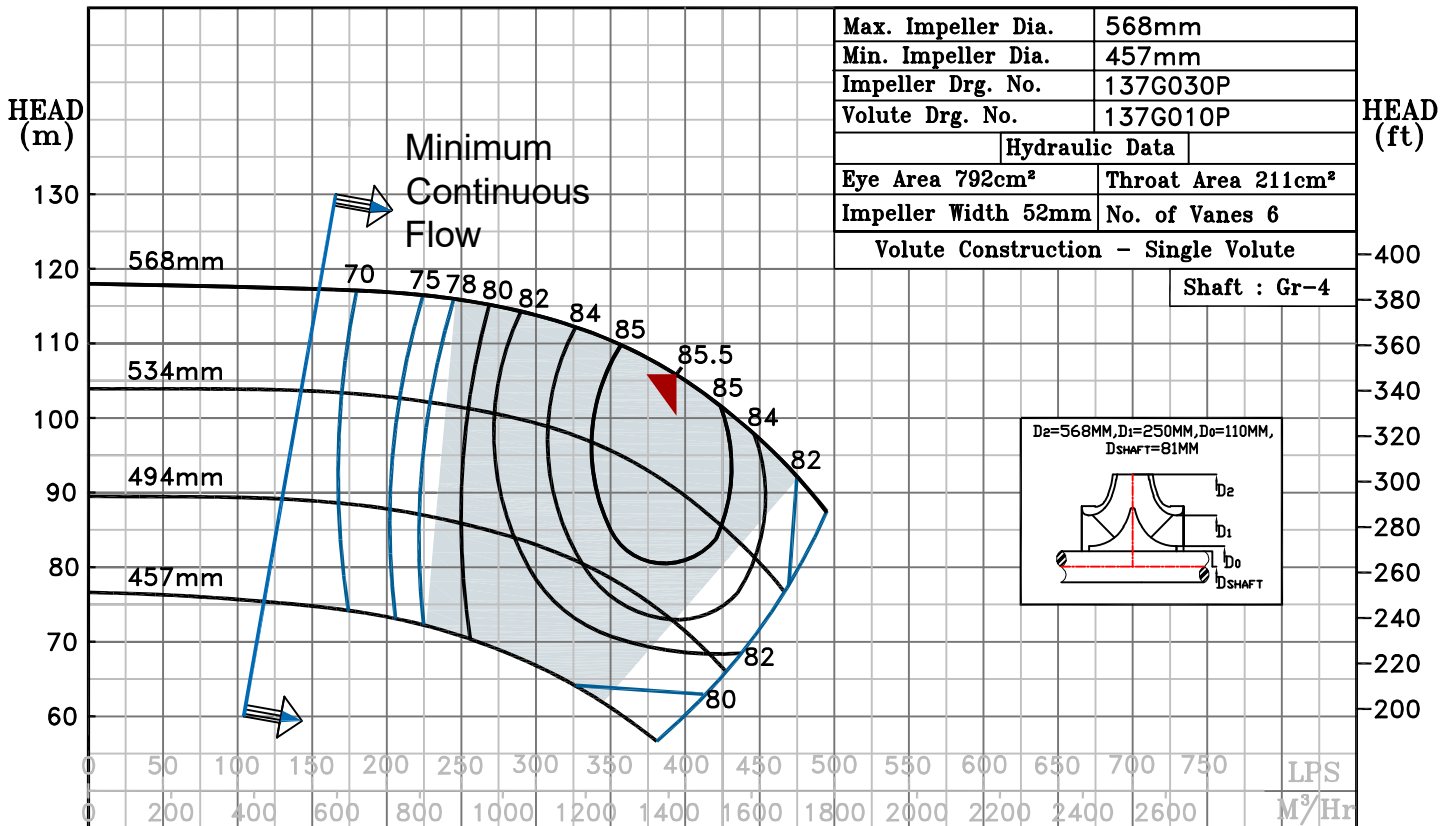


HS RANGE

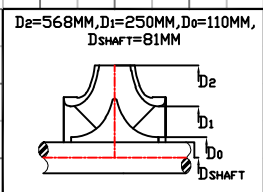
MODEL 10HS22	WORKING PRESS. 16 bar
SIZE 300x250-568	TEST PRESS. 24 bar
TYPE-AXIALLY SPLIT CASE SINGLE STAGE	
SPEED 1480 rpm	
DATE - 06.10.2022	

SHADED REGION ON THE H-Q CURVE REPRESENTS OPTIMUM SELECTION ZONE

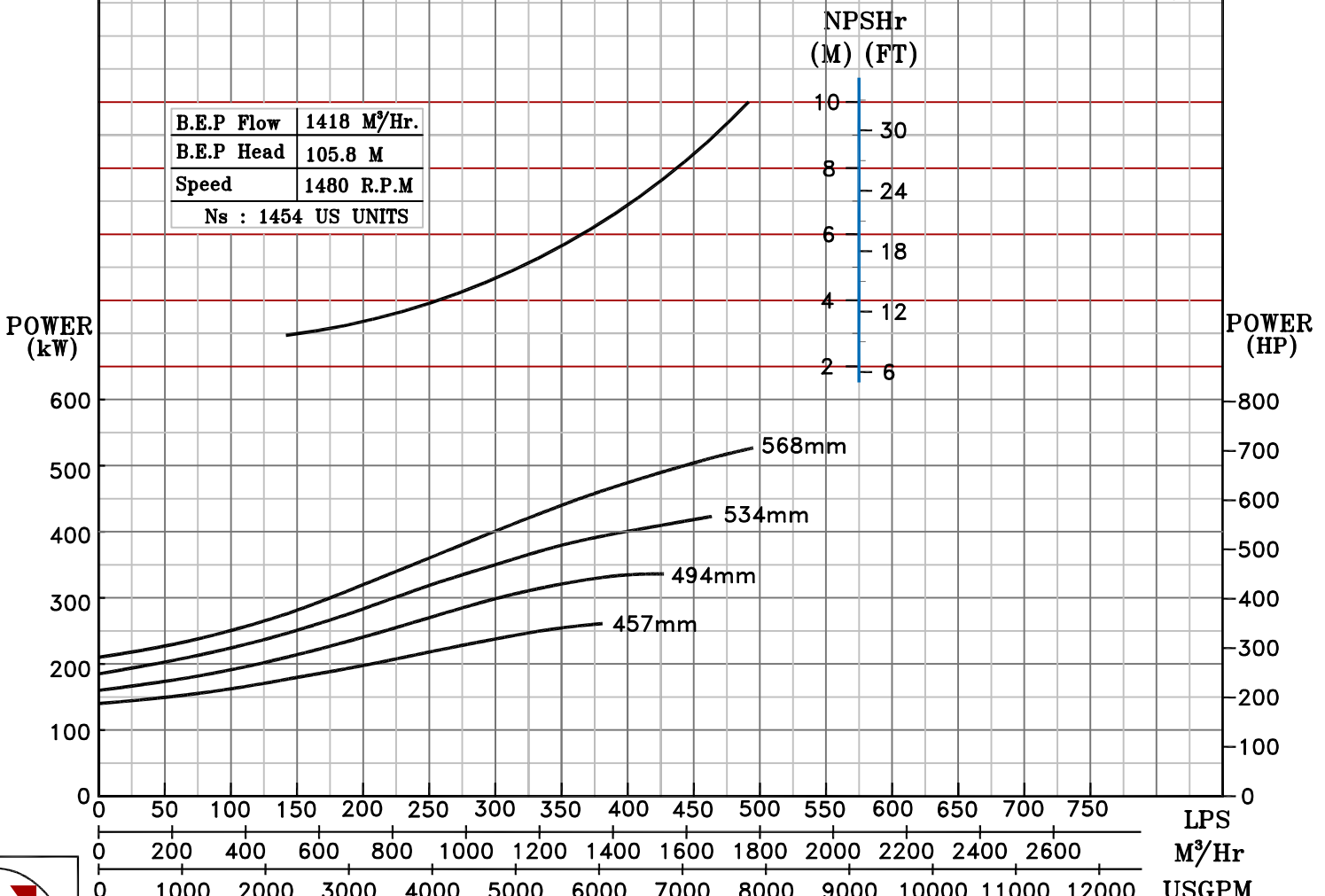
PUMP PERFORMANCE CHARACTERISTICS COMPUTED BASED ON CLEAN COLD WATER S.G 1.0



Max. Impeller Dia.	568mm
Min. Impeller Dia.	457mm
Impeller Drg. No.	137G030P
Volute Drg. No.	137G010P
Hydraulic Data	
Eye Area 792cm <sup>2</sup>	Throat Area 211cm <sup>2</sup>
Impeller Width 52mm	No. of Vanes 6
Volute Construction - Single Volute	
Shaft : Gr-4	



B.E.P Flow	1418 M <sup>3</sup> /Hr.
B.E.P Head	105.8 M
Speed	1480 R.P.M
Ns : 1454 US UNITS	



1480 RPM