

PERFORMANCE CURVE OF ESL 350-650 @980 R.P.M

ESL 350-650/X/0912



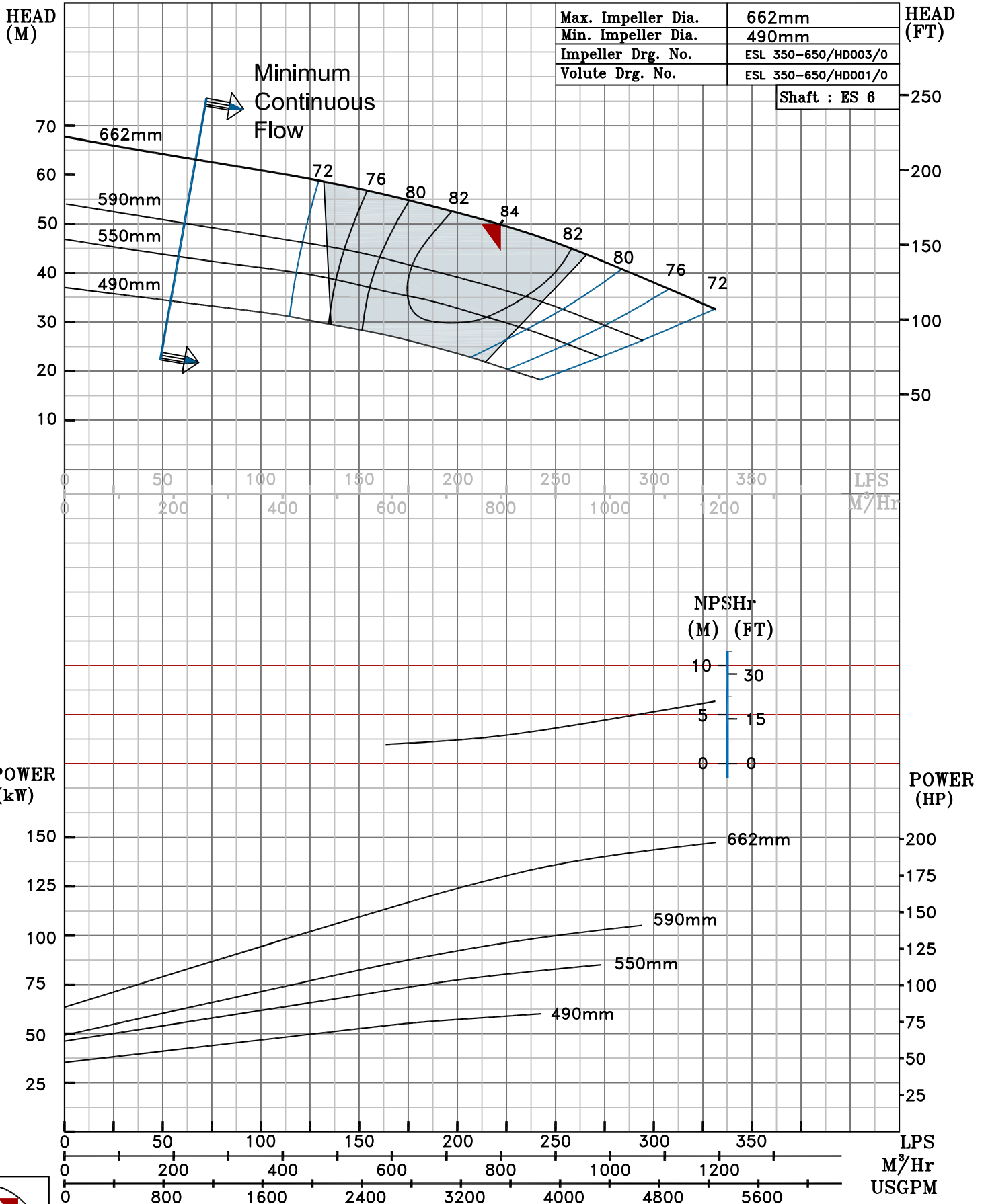
PUMPSENSE

ESL RANGE

MODEL	ESL 350-650	WORKING PRESS.	20 bar
SIZE	400x350-662	TEST PRESS.	30 bar
TYPE-END SUCTION BACK PULL-OUT		SPEED 980 rpm	

SHADED REGION ON THE H-Q CURVE REPRESENTS OPTIMUM SELECTION ZONE

PUMP PERFORMANCE CHARACTERISTICS COMPUTED BASED ON CLEAN COLD WATER S.G 1.0



980 RPM