

PERFORMANCE CURVE OF ESL 300-650 @980 R.P.M

ESL 300-650/X/0912



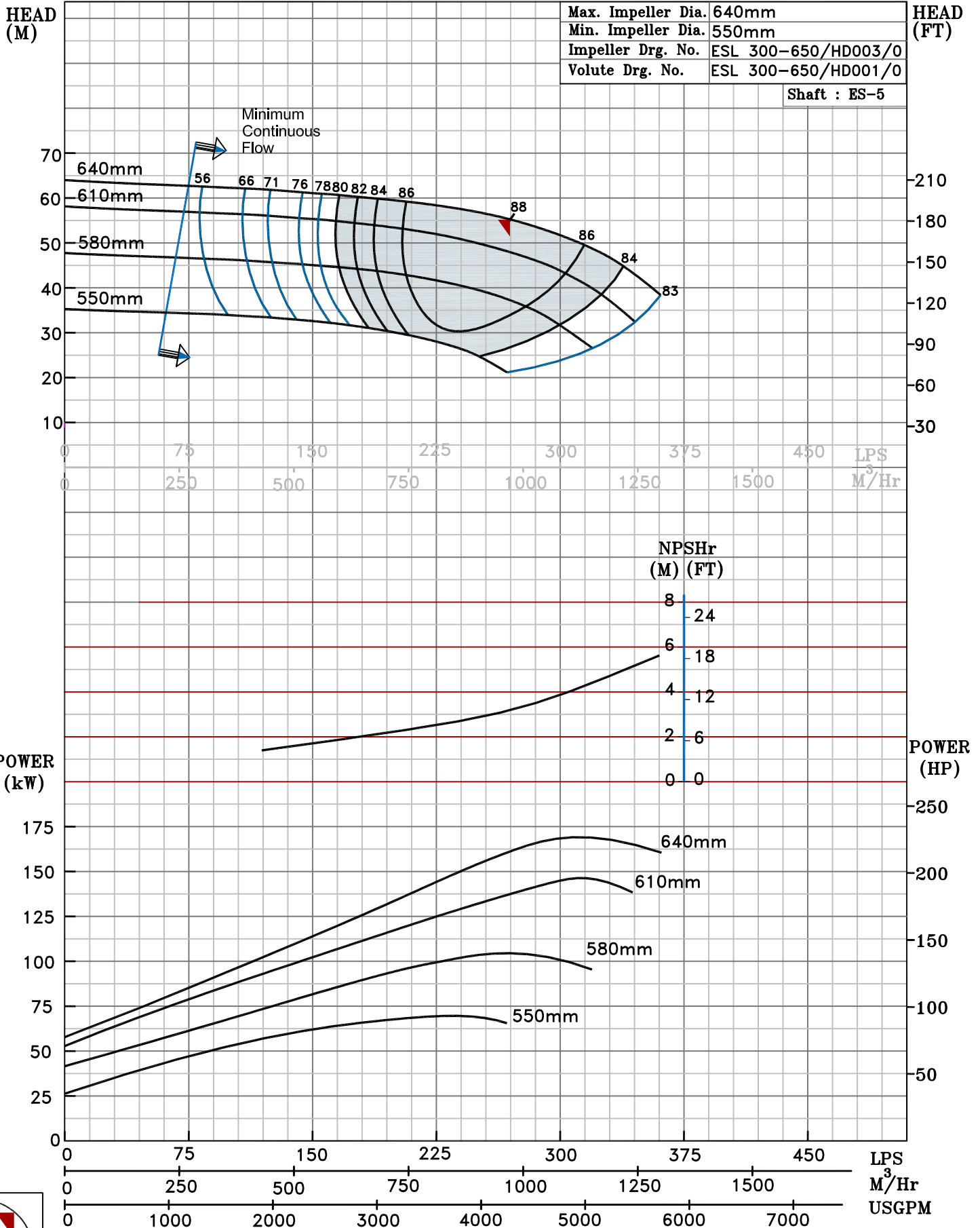
PUMPSENSE

ESL RANGE

MODEL	ESL 300-650	WORKING PRESS.	16 bar
SIZE	350X300-640	TEST PRESS.	24 bar
TYPE-END SUCTION BACK PULL-OUT		SPEED 980 rpm	

SHADED REGION ON THE H-Q CURVE REPRESENTS OPTIMUM SELECTION ZONE

PUMP PERFORMANCE CHARACTERISTICS COMPUTED BASED ON CLEAN COLD WATER S.G 1.0



Max. Impeller Dia.	640mm
Min. Impeller Dia.	550mm
Impeller Drg. No.	ESL 300-650/HD003/0
Volute Drg. No.	ESL 300-650/HD001/0
Shaft : ES-5	



980 RPM