

NOTE- PERFORMANCE AS PER ISO 9906 GRADE-2B

PERFORMANCE CURVE OF ES 80-160 @2900 R.P.M

ES 80-160/X/402052



PUMPSENSE

ISO 2858

ES RANGE

MODEL ES 80-160

WORKING PRESS. 16 bar

SIZE 125x80-172

TEST PRESS. 24 bar

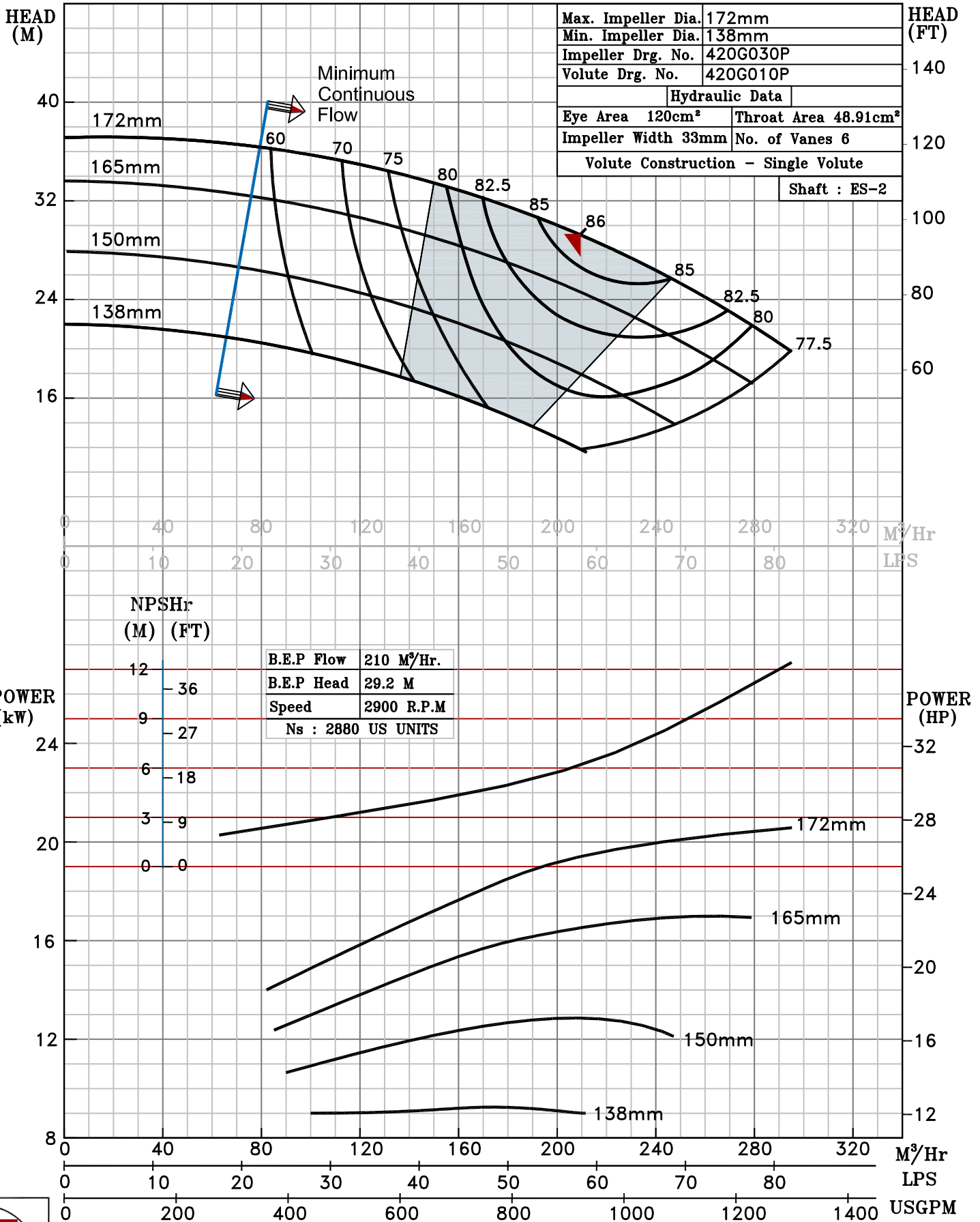
TYPE - END SUCTION BACK PULL OUT

SPEED 2900 rpm

SHADED REGION ON THE H-Q CURVE REPRESENTS OPTIMUM SELECTION ZONE

PUMP PERFORMANCE CHARACTERISTICS COMPUTED BASED ON CLEAN COLD WATER S.G 1.0

Max. Impeller Dia.	172mm
Min. Impeller Dia.	138mm
Impeller Drg. No.	420G030P
Volute Drg. No.	420G010P
Hydraulic Data	
Eye Area 120cm <sup>2</sup>	Throat Area 48.91cm <sup>2</sup>
Impeller Width 33mm	No. of Vanes 6
Volute Construction - Single Volute	
Shaft : ES-2	



2900 RPM