
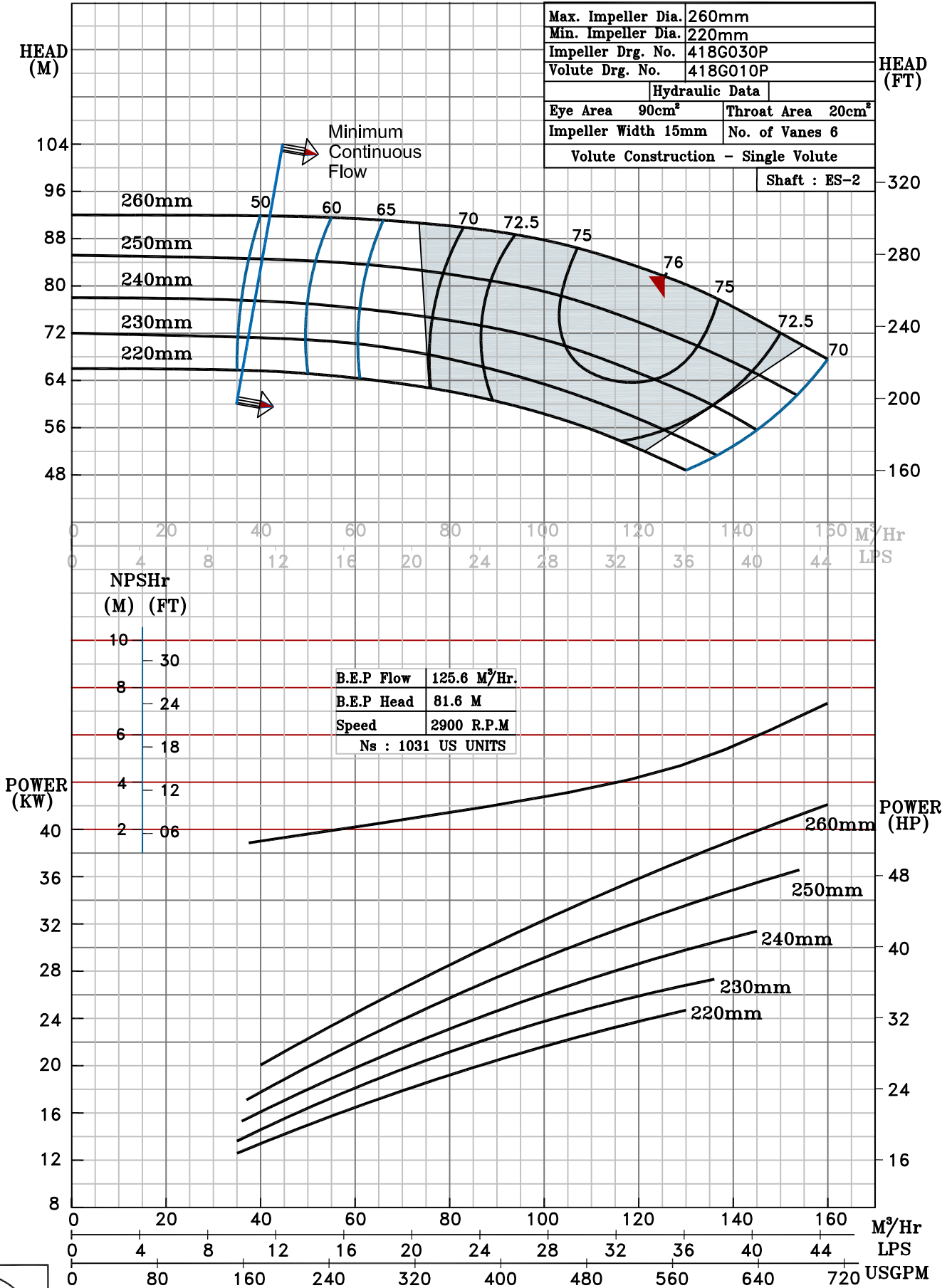


NOTE- PERFORMANCE AS PER ISO 9906 GRADE-2B

PERFORMANCE CURVE OF ES 65-250 @2900 R.P.M		ES 65-250/X/401852	
	PUMPSENSE	ISO 2858	MODEL ES 65-250
		<i>ES RANGE</i>	WORKING PRESS. 16 bar
			TEST PRESS. 24 bar
		TYPE - END SUCTION BACK PULL OUT	
		SPEED 2900 rpm	

SHADED REGION ON THE H-Q CURVE REPRESENTS OPTIMUM SELECTION ZONE

PUMP PERFORMANCE CHARACTERISTICS COMPUTED BASED ON CLEAN COLD WATER S.G 1.0



2900 RPM