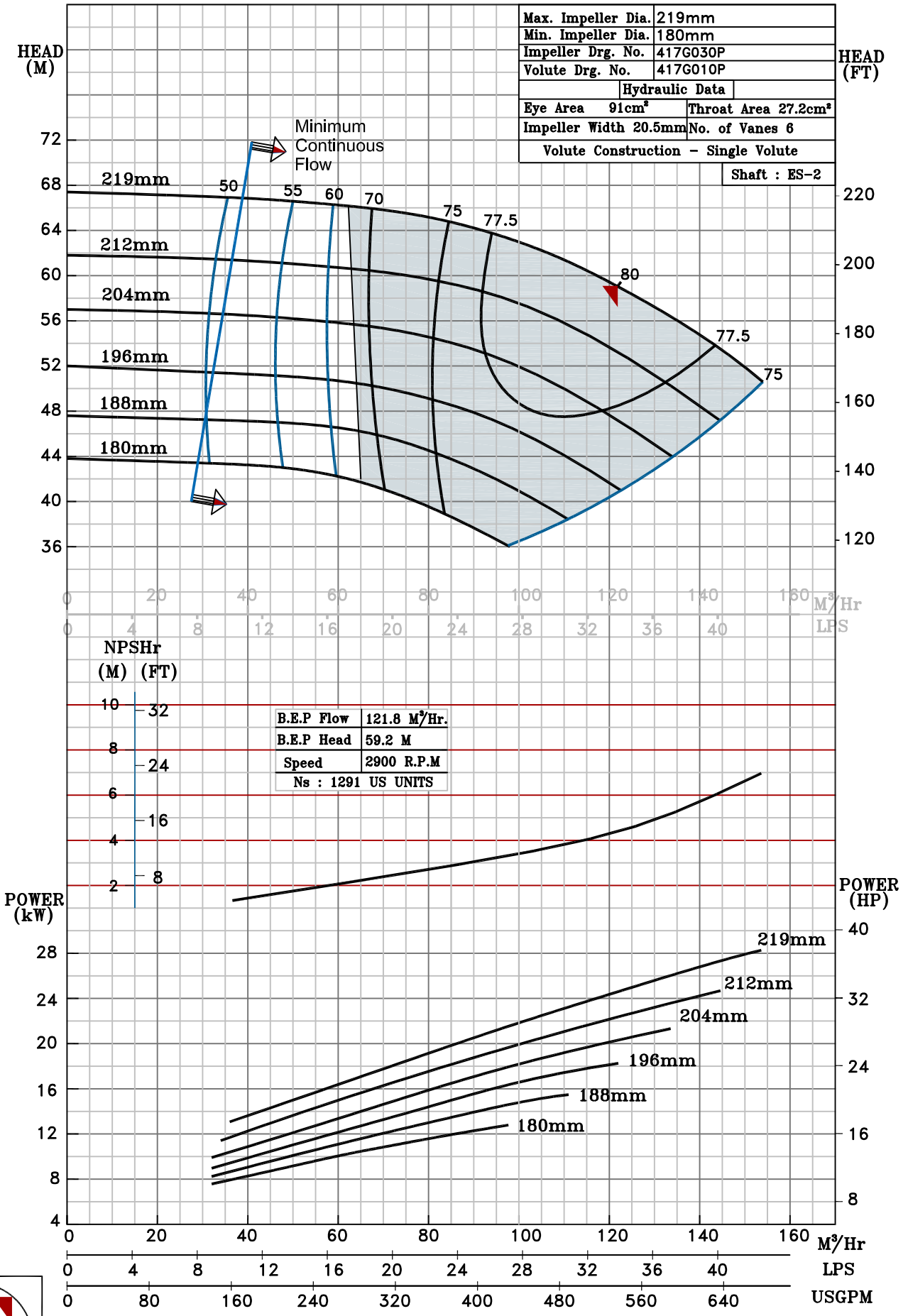


NOTE- PERFORMANCE AS PER ISO 9906 GRADE-2B

PERFORMANCE CURVE OF ES 65-200 @2900 R.P.M		ES 65-200/X/401752	
 PUMPSENSE ISO 2858 ES RANGE	MODEL ES 65-200	WORKING PRESS.	16 bar
	SIZE 100x65-219	TEST PRESS.	24 bar
TYPE - END SUCTION		BACK PULL OUT	
SPEED 2900 rpm			

SHADED REGION ON THE H-Q CURVE REPRESENTS OPTIMUM SELECTION ZONE

PUMP PERFORMANCE CHARACTERISTICS COMPUTED BASED ON CLEAN COLD WATER S.G 1.0



B.E.P Flow	121.8 M ³ /Hr.
B.E.P Head	59.2 M
Speed	2900 R.P.M
Ns : 1291 US UNITS	



2900 RPM