
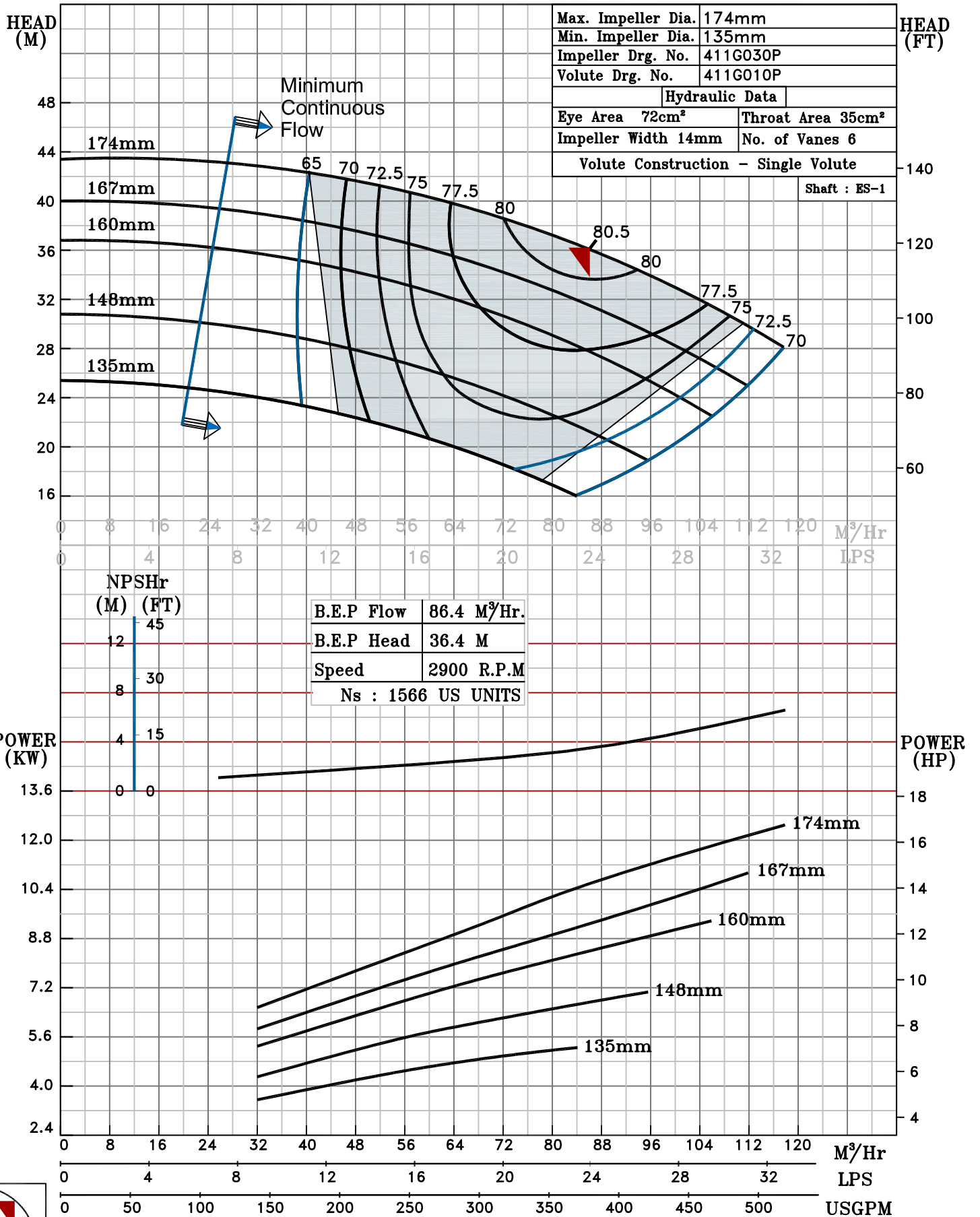


NOTE- PERFORMANCE AS PER ISO 9906 GRADE-2B

PERFORMANCE CURVE OF ES 50-160 @2900 R.P.M		ES 50-160/X/401152	
 PUMPSENSE ISO 2858 ES RANGE	MODEL ES 50-160	WORKING PRESS.	16 bar
	SIZE 80x50-174	TEST PRESS.	24 bar
		TYPE - END SUCTION BACK PULL OUT	
		SPEED 2900 rpm	

SHADED REGION ON THE H-Q CURVE REPRESENTS OPTIMUM SELECTION ZONE
 PUMP PERFORMANCE CHARACTERISTICS COMPUTED BASED ON CLEAN COLD WATER S.G 1.0



2900 RPM