
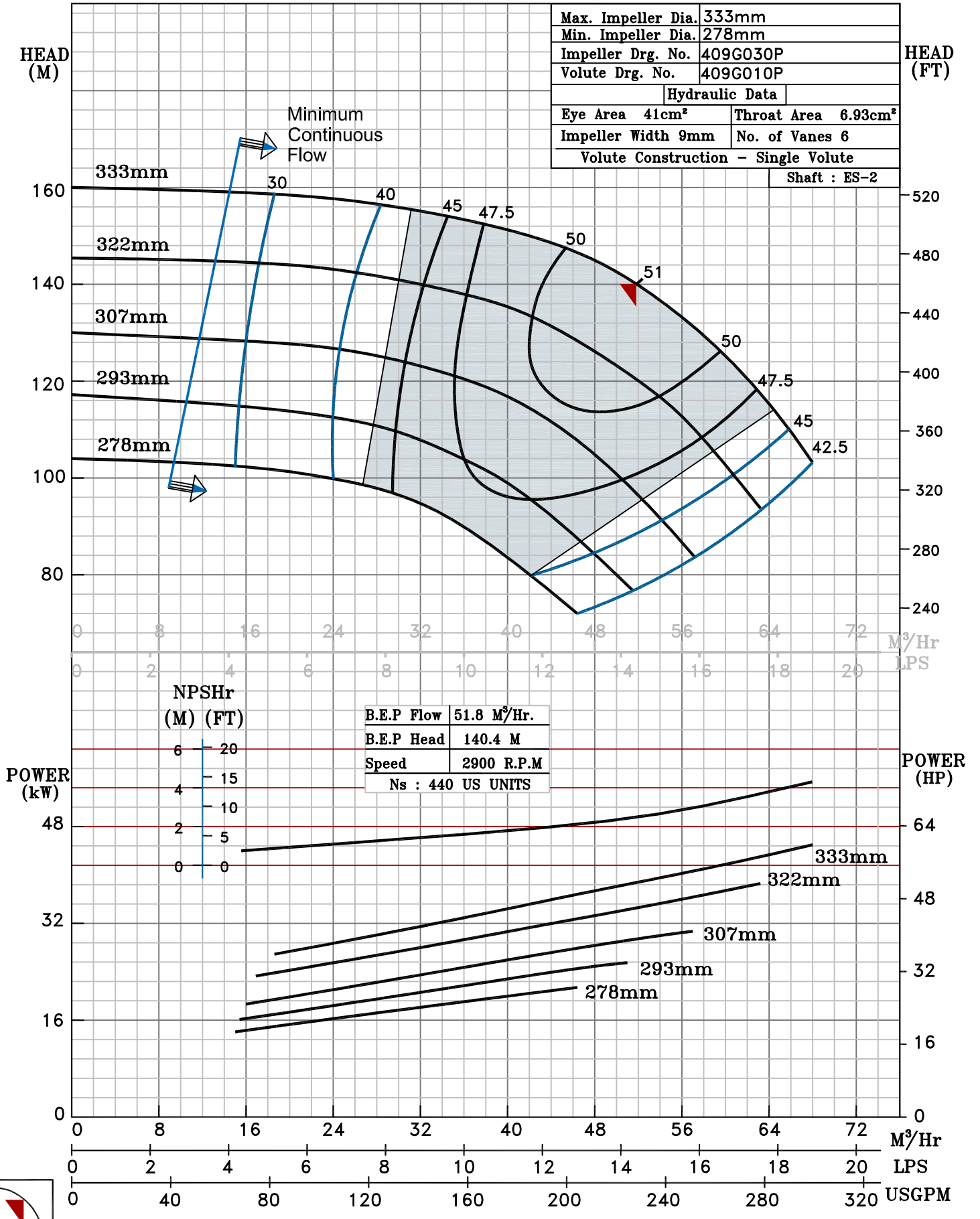


NOTE- PERFORMANCE AS PER ISO 9906 GRADE-2B

PERFORMANCE CURVE OF ES 40-315 @2900 R.P.M		ES 40-315/X/400952	
 <h1>PUMPSENSE</h1> <p>ISO 2858 ES RANGE</p>	MODEL ES 40-315	WORKING PRESS.	16 bar
	SIZE 65x40-333	TEST PRESS.	24 bar
	TYPE - END SUCTION BACK PULL OUT		
	SPEED 2900 rpm		

SHADED REGION ON THE H-Q CURVE REPRESENTS OPTIMUM SELECTION ZONE  
 PUMP PERFORMANCE CHARACTERISTICS COMPUTED BASED ON CLEAN COLD WATER S.G 1.0

Max. Impeller Dia.	333mm
Min. Impeller Dia.	278mm
Impeller Drg. No.	409G030P
Volute Drg. No.	409G010P
Hydraulic Data	
Eye Area	41cm <sup>2</sup>
Throat Area	6.93cm <sup>2</sup>
Impeller Width	9mm
No. of Vanes	6
Volute Construction - Single Volute	
Shaft : ES-2	



B.E.P Flow	51.8 M <sup>3</sup> /Hr.
B.E.P Head	140.4 M
Speed	2900 R.P.M
Ns : 440 US UNITS	

NPSHr	(M) (FT)
6	20
4	15
2	10
0	5
0	0



2900 RPM