
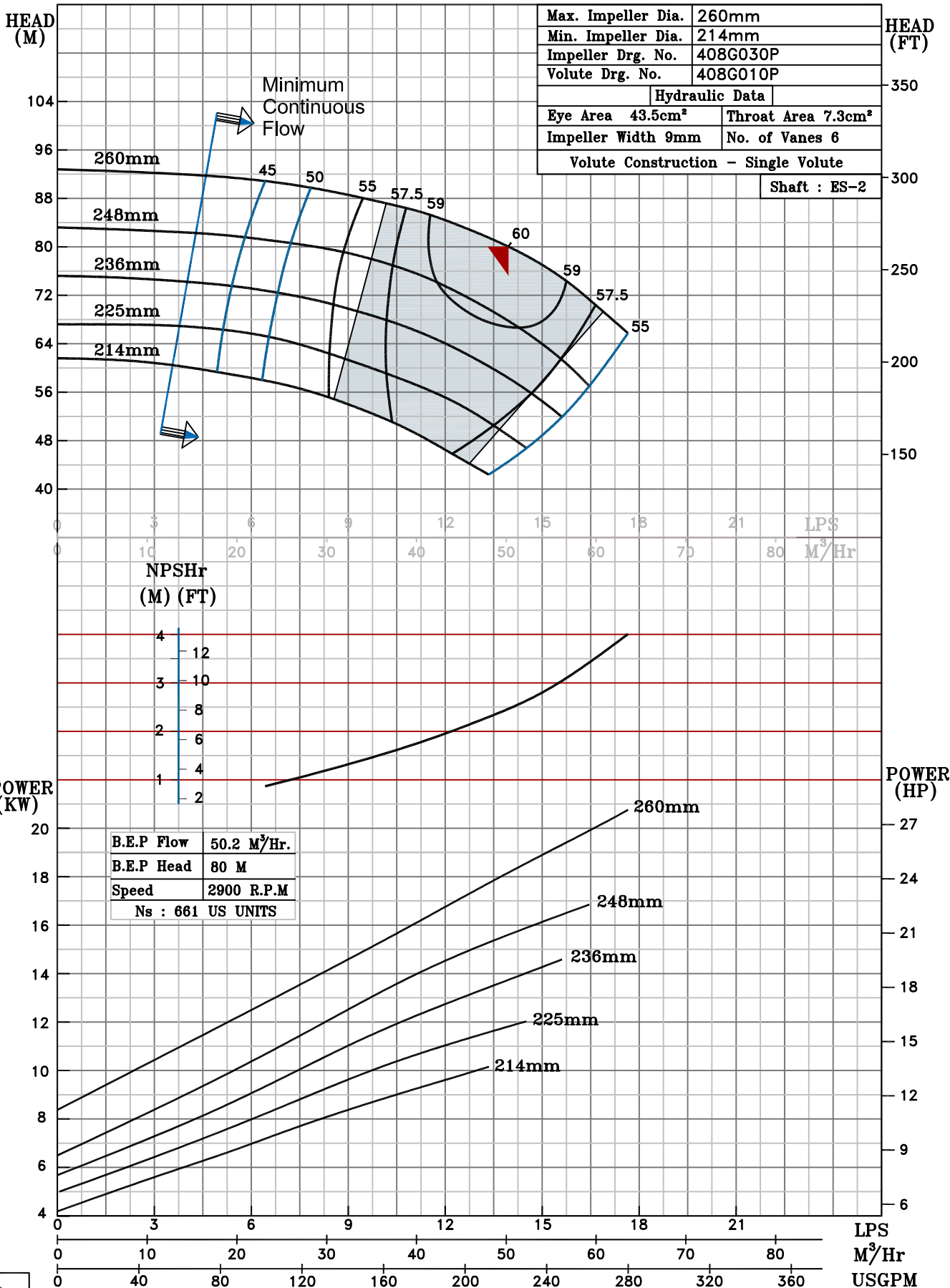


NOTE- PERFORMANCE AS PER ISO 9906 GRADE-2B

<b>PERFORMANCE CURVE OF ES 40-250 @2900 R.P.M</b>		ES 40-250/X/400852	
	<b>PUMPSENSE</b>	<i>ISO 2858</i>	<b>MODEL ES 40-250</b>
		<i>ES RANGE</i>	WORKING PRESS. 16 bar
		SIZE 65x40-260	TEST PRESS. 24 bar
		TYPE - END SUCTION BACK PULL OUT	
		SPEED 2900 rpm	

SHADED REGION ON THE H-Q CURVE REPRESENTS OPTIMUM SELECTION ZONE

PUMP PERFORMANCE CHARACTERISTICS COMPUTED BASED ON CLEAN COLD WATER S.G 1.0



2900 RPM