

NOTE- PERFORMANCE AS PER ISO 9906 GRADE-2B

PERFORMANCE CURVE OF ES 40-200 @2900 R.P.M

ES 40-200/X/400752



PUMPSENSE

ISO 2858

MODEL ES 40-200

WORKING PRESS. 16 bar

SIZE 65x40-209

TEST PRESS. 24 bar

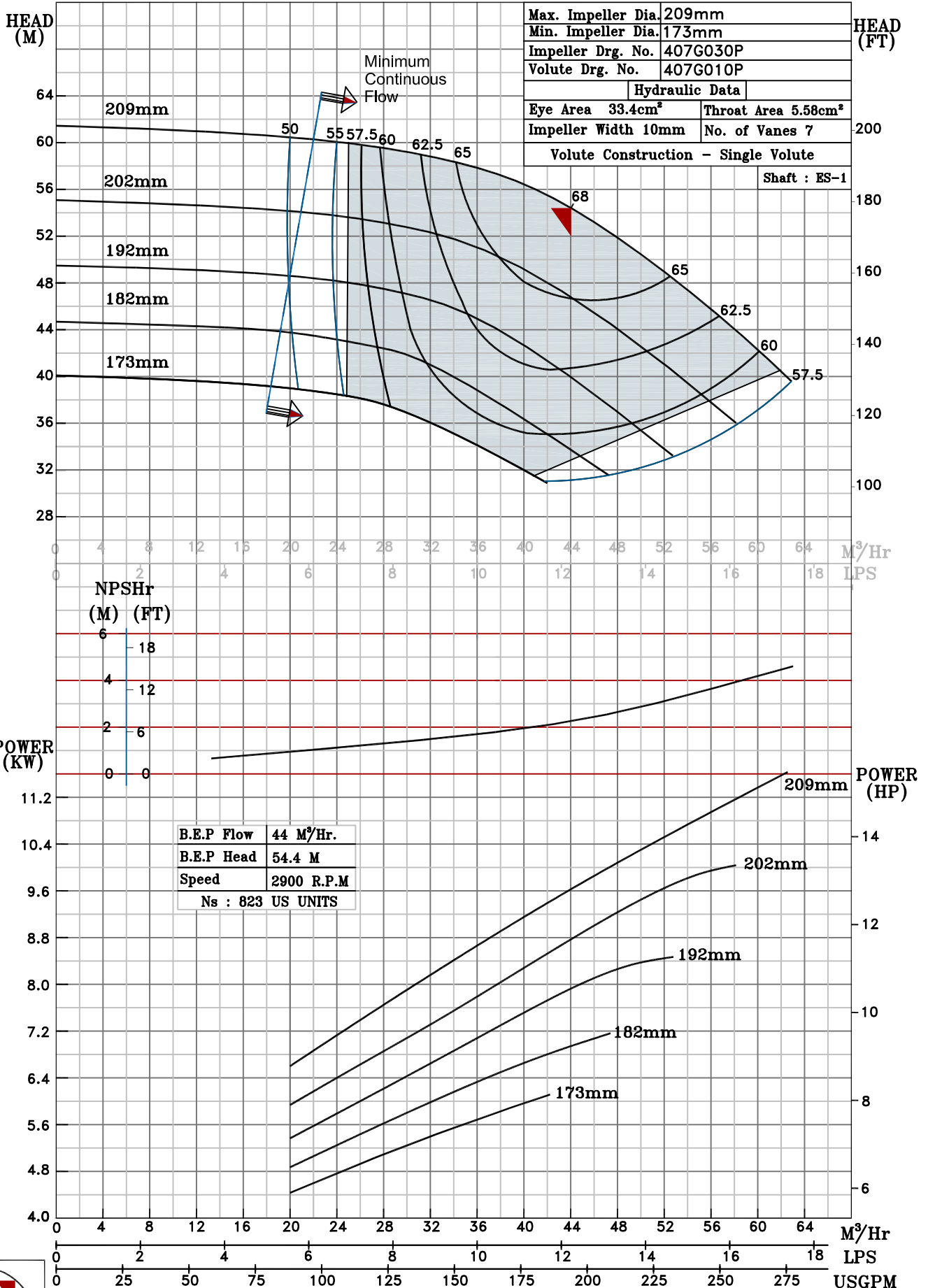
ES RANGE

TYPE - END SUCTION BACK PULL OUT

SPEED 2900 rpm

SHADED REGION ON THE H-Q CURVE REPRESENTS OPTIMUM SELECTION ZONE

PUMP PERFORMANCE CHARACTERISTICS COMPUTED BASED ON CLEAN COLD WATER S.G 1.0



2900 RPM