
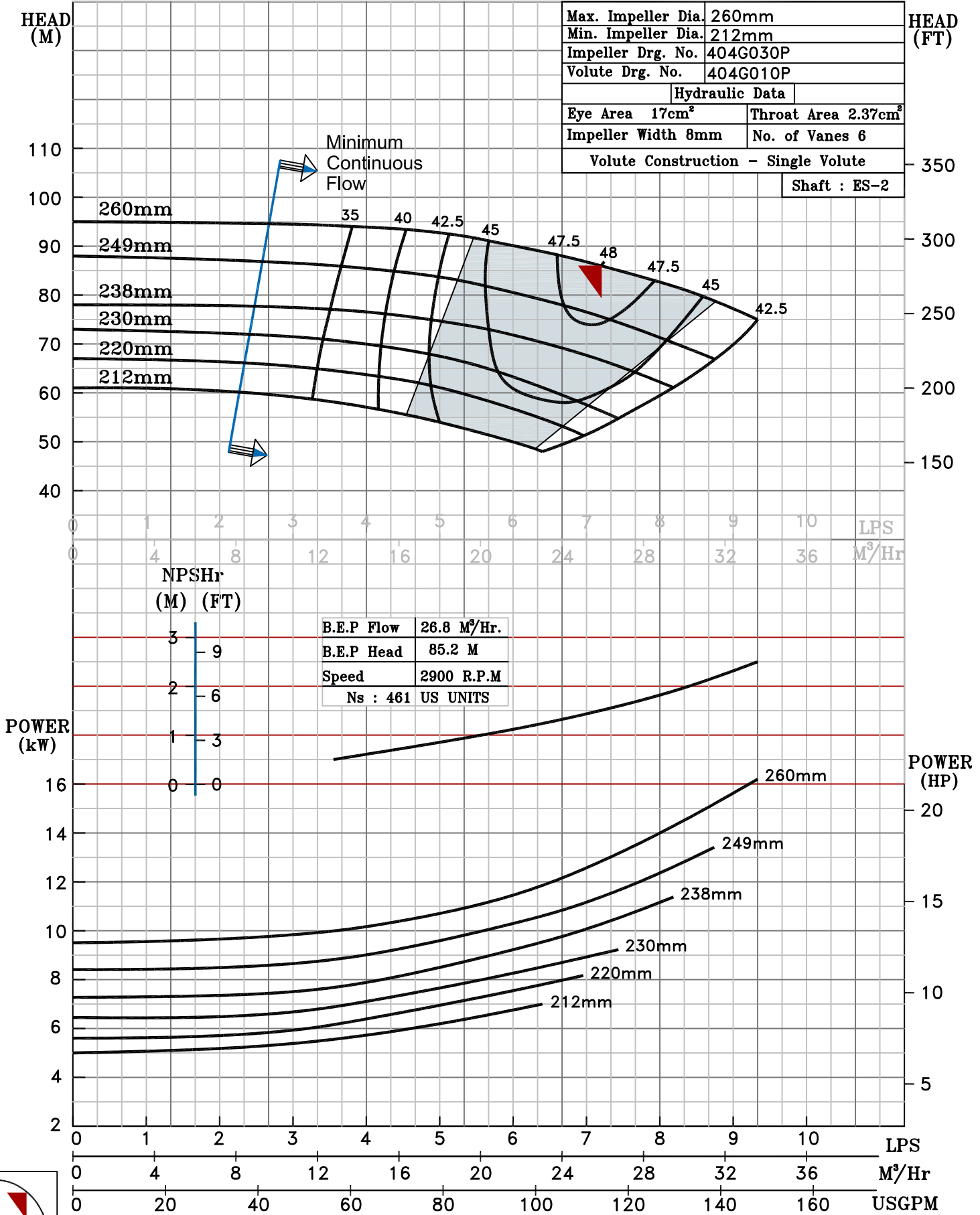


NOTE- PERFORMANCE AS PER ISO 9906 GRADE-2B

PERFORMANCE CURVE OF ES 32-250 @2900 R.P.M		ES 32-250/X/400452	
 PUMPSENSE ISO 2858 ES RANGE	MODEL ES 32-250	WORKING PRESS.	16 bar
	SIZE 50x32-260	TEST PRESS.	24 bar
	TYPE - END SUCTION	BACK PULL OUT	SPEED 2900 rpm

SHADED REGION ON THE H-Q CURVE REPRESENTS OPTIMUM SELECTION ZONE
 PUMP PERFORMANCE CHARACTERISTICS COMPUTED BASED ON CLEAN COLD WATER S.G 1.0

Max. Impeller Dia.	260mm
Min. Impeller Dia.	212mm
Impeller Drg. No.	404G030P
Volute Drg. No.	404G010P
Hydraulic Data	
Eye Area 17cm ²	Throat Area 2.37cm ²
Impeller Width 8mm	No. of Vanes 6
Volute Construction - Single Volute	
Shaft : ES-2	



2900 RPM