
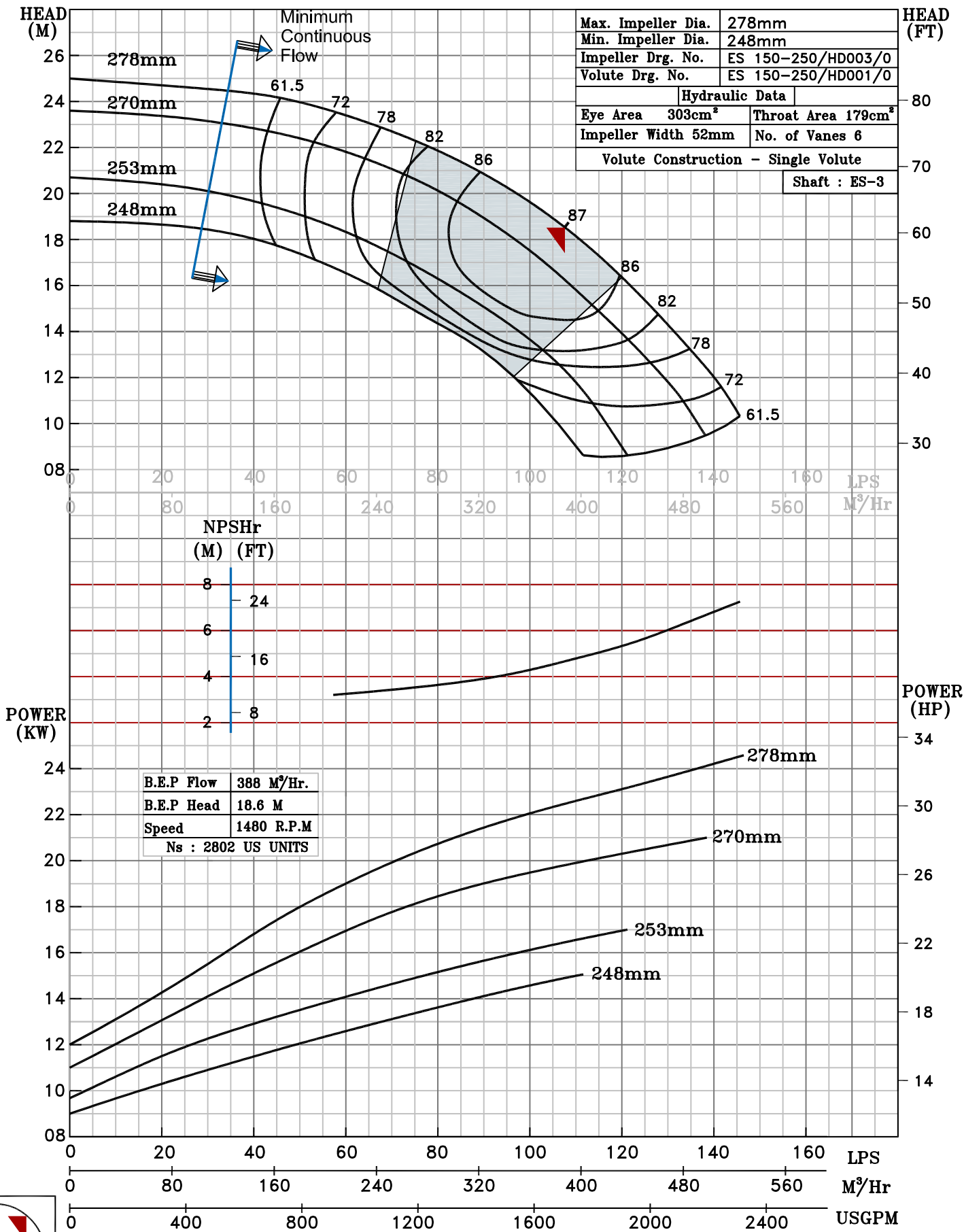


NOTE- PERFORMANCE AS PER ISO 9906 GRADE-2B

PERFORMANCE CURVE OF ES 150-250 @1480 R.P.M		ES 150-250/X/403554
 <b>PUMPSENSE</b> <i>ISO 2858</i> <b>ES RANGE</b>	<b>MODEL ES 150-250</b>	WORKING PRESS. 16 bar
	SIZE 200x150-278	TEST PRESS. 24 bar
	TYPE - END SUCTION BACK PULL OUT	
		SPEED 1480 rpm

SHADED REGION ON THE H-q CURVE REPRESENTS OPTIMUM SELECTION ZONE

PUMP PERFORMANCE CHARACTERISTICS COMPUTED BASED ON CLEAN COLD WATER S.G 1.0



1480 RPM