


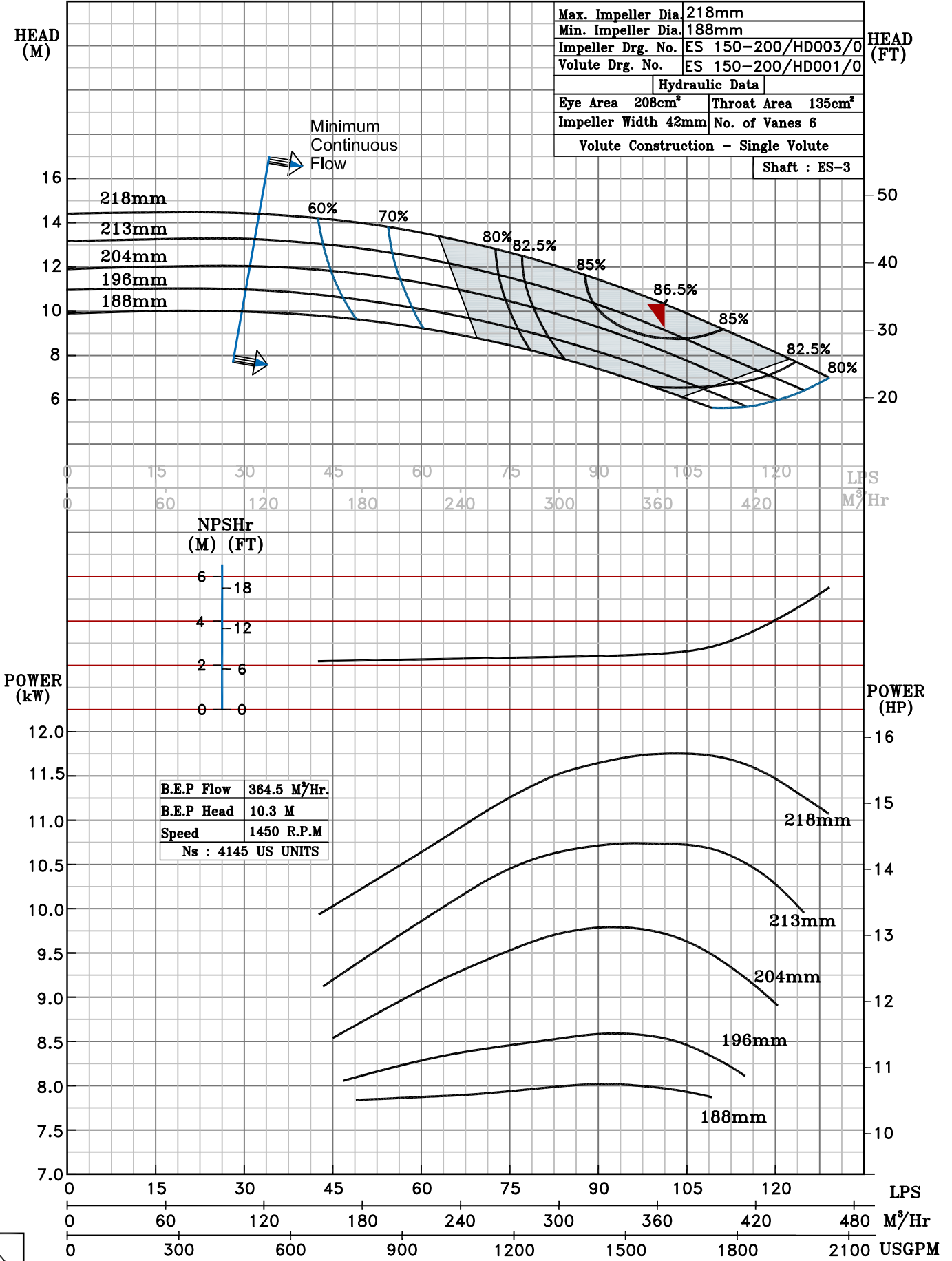
NOTE- PERFORMANCE AS PER ISO 9906 GRADE-2B

PERFORMANCE CURVE OF ES 150-200 @1450 R.P.M		ES 150-200/X/403454	
	<b>PUMPSENSE</b> ISO 2858 ES RANGE	MODEL ES 150-200	WORKING PRESS. 16 bar
		SIZE 200x150-218	TEST PRESS. 24 bar
TYPE - END SUCTION BACK PULL OUT			SPEED 1450 rpm

SHADED REGION ON THE H-Q CURVE REPRESENTS OPTIMUM SELECTION ZONE

PUMP PERFORMANCE CHARACTERISTICS COMPUTED BASED ON CLEAN COLD WATER S.G 1.0

Max. Impeller Dia.	218mm
Min. Impeller Dia.	188mm
Impeller Drg. No.	ES 150-200/HD003/0
Volute Drg. No.	ES 150-200/HD001/0
Hydraulic Data	
Eye Area	208cm <sup>2</sup>
Throat Area	135cm <sup>2</sup>
Impeller Width	42mm
No. of Vanes	6
Volute Construction - Single Volute	
Shaft : ES-3	



1450 RPM