

NOTE- PERFORMANCE AS PER ISO 9906 GRADE-2B

PERFORMANCE CURVE OF ES 125-400 @1480 R.P.M

ES 125-400/X/403354



PUMPSENSE

ISO 2858  
ES RANGE

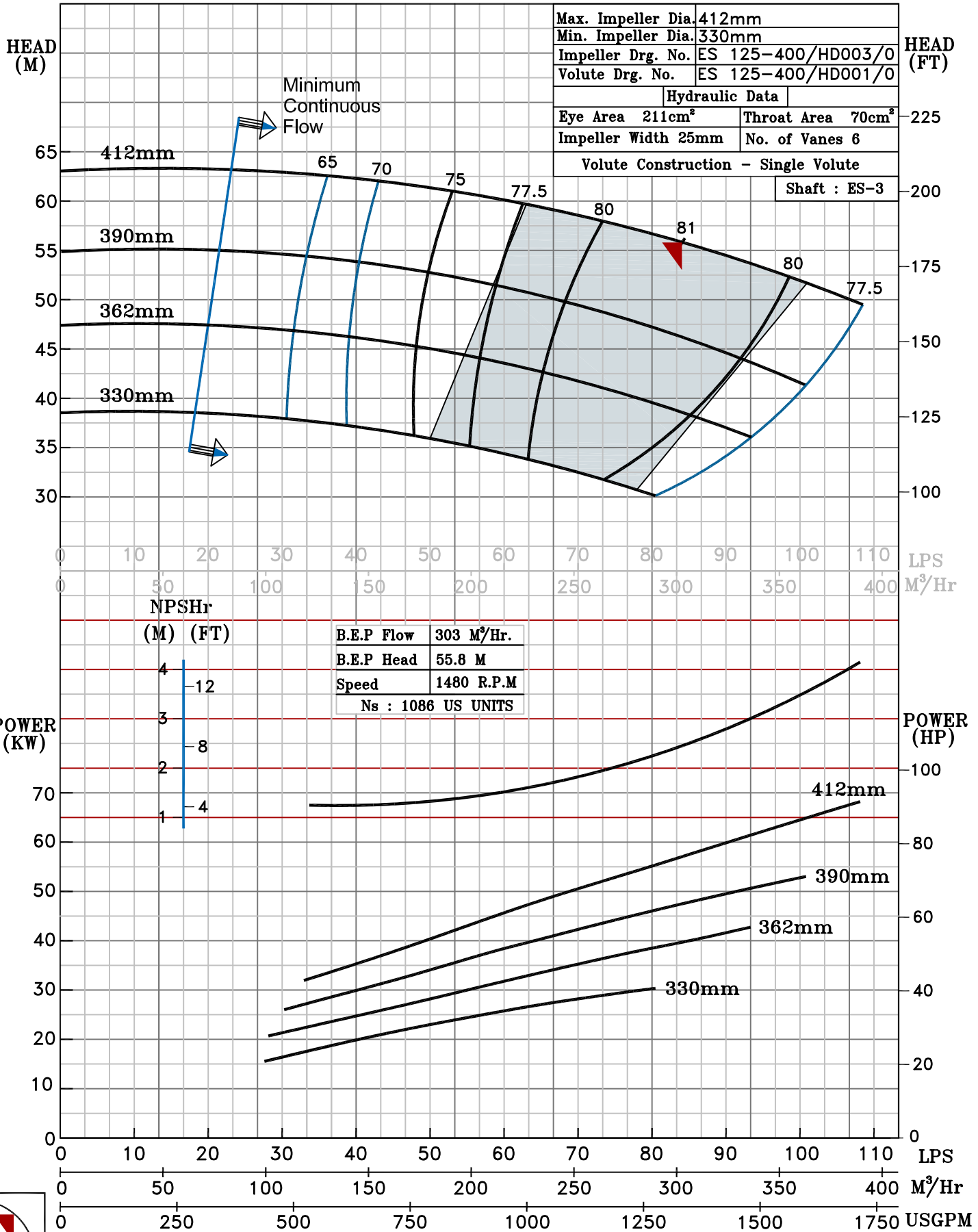
MODEL ES 125-400  
SIZE 150x125-412

WORKING PRESS. 16 bar  
TEST PRESS. 24 bar  
TYPE - END SUCTION BACK PULL OUT  
SPEED 1480 rpm

SHADED REGION ON THE H-Q CURVE REPRESENTS OPTIMUM SELECTION ZONE

PUMP PERFORMANCE CHARACTERISTICS COMPUTED BASED ON CLEAN COLD WATER S.G 1.0

Max. Impeller Dia.	412mm
Min. Impeller Dia.	330mm
Impeller Drg. No.	ES 125-400/HD003/0
Volute Drg. No.	ES 125-400/HD001/0
Hydraulic Data	
Eye Area	211cm <sup>2</sup>
Throat Area	70cm <sup>2</sup>
Impeller Width	25mm
No. of Vanes	6
Volute Construction - Single Volute	
Shaft : ES-3	



1480 RPM